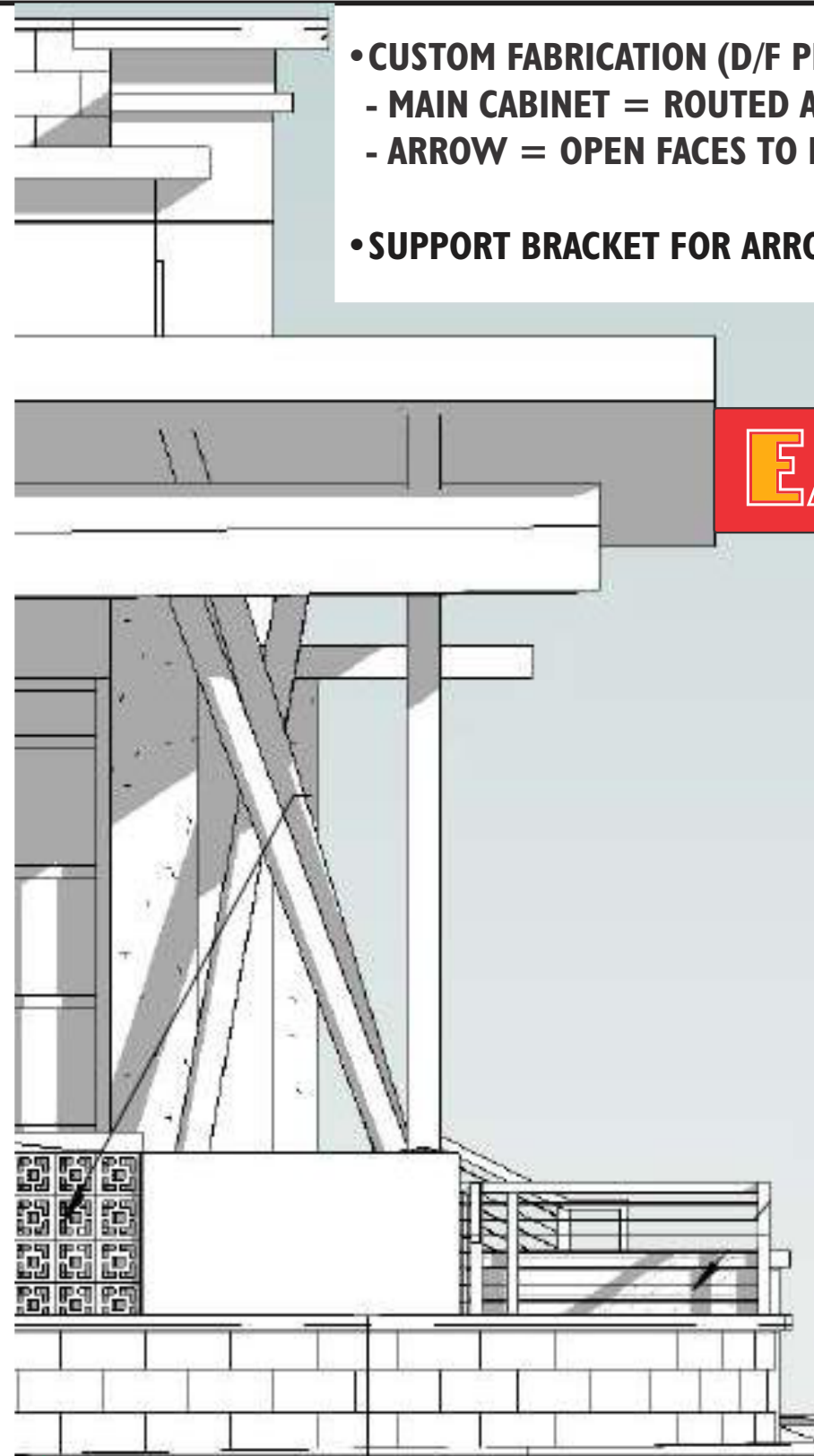
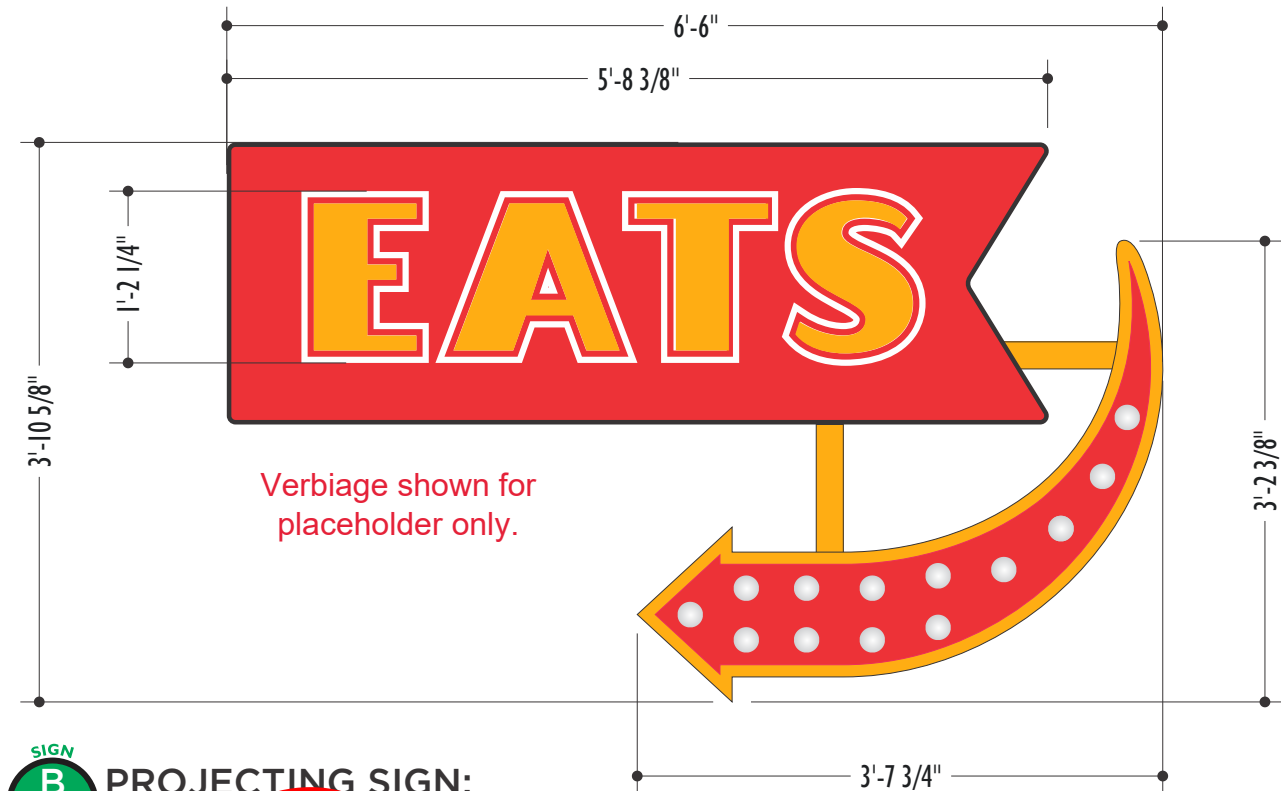
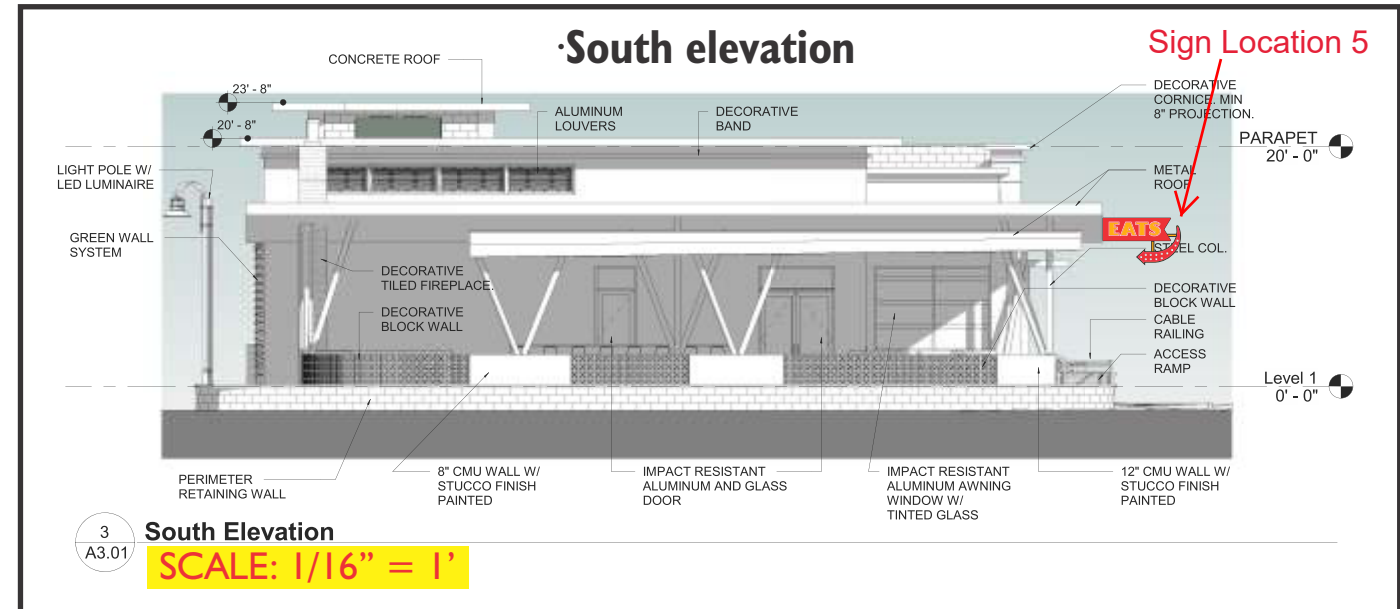


- CUSTOM FABRICATION (D/F PROJECTING SIGN) WITH .125" ALUMINUM BACKS. .090 ALUMINUM RETURNS AND .090 ALUMINUM FACES.
  - MAIN CABINET = ROUTED ALUM FACES WITH WHITE PUSH THROUGH PLEX WITH GOLD TRANSLUCENT VINYL
  - ARROW = OPEN FACES TO HAVE GOLD VINYL OUTLINE ON BACK OF ARROW AND LED BULBS MOUNTED TO FALSE BACK.
- SUPPORT BRACKET FOR ARROW = SQ. TUBING



**PROJECTING SIGN:**  
3/8" SCALE



**PROJECTING SIGN:**  
3/4" SCALE

PROUD MEMBERS



OUR OFFICE

1030 Straight St.  
Cincinnati, Oh 45214  
513-541-0024 Office  
513-541-0589 Fax

APPROVED SHOP

This sign will be  
Labeled ul or equal.  
  
The installation  
Will meet national  
Electrical code  
Requirements

REVISIONS

- 08-26-21  
MAKE CHANGES PER  
CUSTOMERS NOTES
- 09-01-21  
MAKE CHANGES PER  
TM'S MARKED UP DWGS
- 09-07-21  
MAKE CHANGES PER  
CUSTOMERS MARKED  
UP PDF DWGS
- 09-09-21  
MAKE CHANGES PER  
CUSTOMERS MARKED  
UP PDF DWGS

SKETCH NUMBER	55160
JOB NAME	BADESCO
ADDRESS	POMPANO BEACH, FLORIDA
SALES	TONY MAIER
DESIGNER	R.A.LINES
DATE	08-09-21
DRAWING ID	BADESCO_55160_08-09-21

CUSTOMER APPROVAL

SIGNED: \_\_\_\_\_ DATE: \_\_\_\_\_

LANDLORD APPROVAL

SIGNED: \_\_\_\_\_ DATE: \_\_\_\_\_



Do not use printed drawing for exact color representation. Colors shown represent design intent only.  
This design and proposal are the exclusive property of A&E SIGN & LIGHTING. You may not reproduce, copy, or use this design or proposal without the express written permission of A&E SIGN & LIGHTING.  
Copyright © 2020 - A&E SIGN & LIGHTING

**AAC**  
PZ19-30000004  
10/5/2021