



**PULICE LAND SURVEYORS, INC.**

5381 NOB HILL ROAD

SUNRISE, FL 33351

TELEPHONE (954) 572-1777 FACSIMILE (954) 572-1778

e-mail: surveys@pulicelandsurveyors.com



October 18, 2019

Ms. Maggie Barszewski, AICP  
City of Pompano Beach  
100 West Atlantic Boulevard  
Pompano Beach, FL 33061

**RE: "PARAMOUNT PARK", NW 15<sup>TH</sup> AVE., POMPANO BEACH, FL  
PLAT NOTE AMENDMENT  
(BCPA 4842-2700-0330, 0331, 0332, 0336)**

Dear Ms. Barszewski,

We represent the owner on the above-referenced project. You're currently reviewing the site plan for this site. In the architect's plans, they have added a few mezzanines to the proposed bays. They will be used for storage only, and in an abundance of caution, we are asking to amend the restrictive note on the "PARAMOUNT PARK" plat in order to increase the square footage on this site.

The current plat note reads as follows:

*This plat is restricted as follow: This plat is restricted to 65,000 square feet of ware house use.*

The proposed plat note reads as follows:

*This plat is restricted as follow: This plat is restricted to 70,000 square feet of warehouse use.*

I have included one (1) survey and plat for your review and further use. Should you have any questions or need additional information, please do not hesitate to contact us.

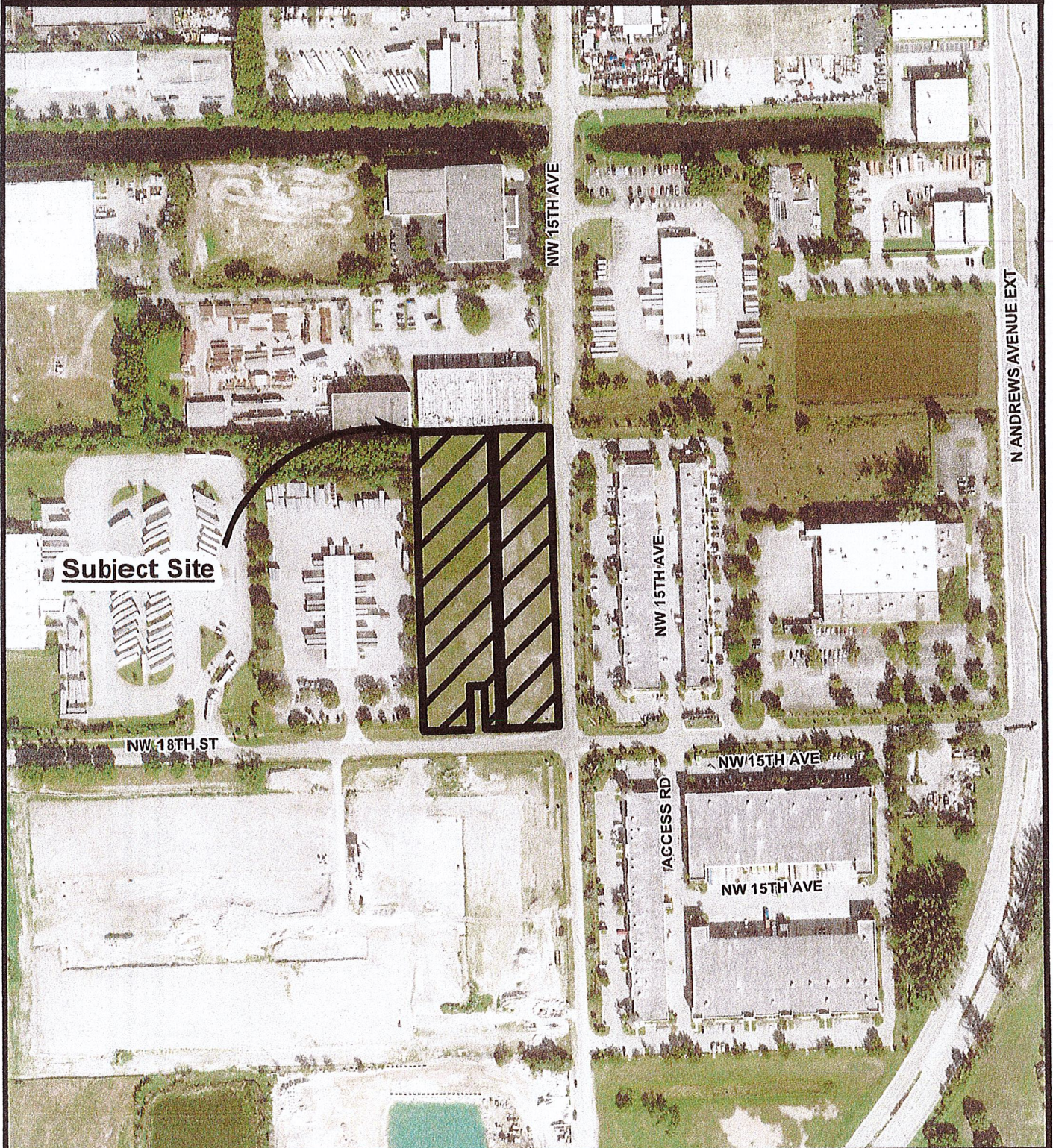
Sincerely,

**PULICE LAND SURVEYORS, INC.**

Jane Storms  
Director of Platting Services  
Encl.



# CITY OF POMPANO BEACH AERIAL MAP



1 in = 292 ft

3

PREPARED BY:  
DEPARTMENT OF  
DEVELOPMENT SERVICES