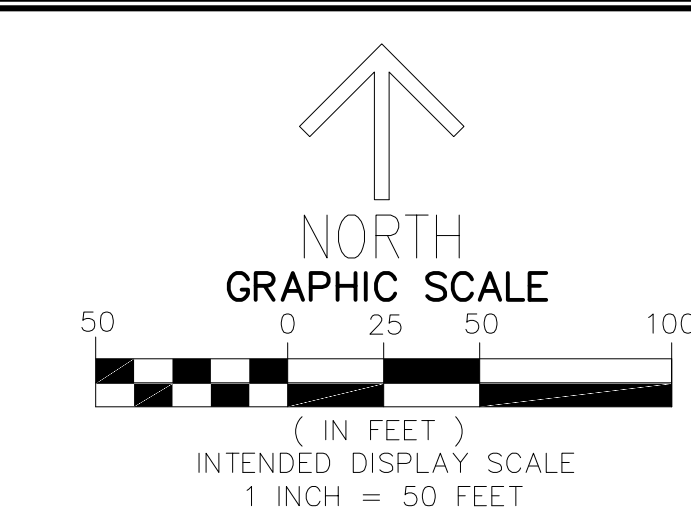
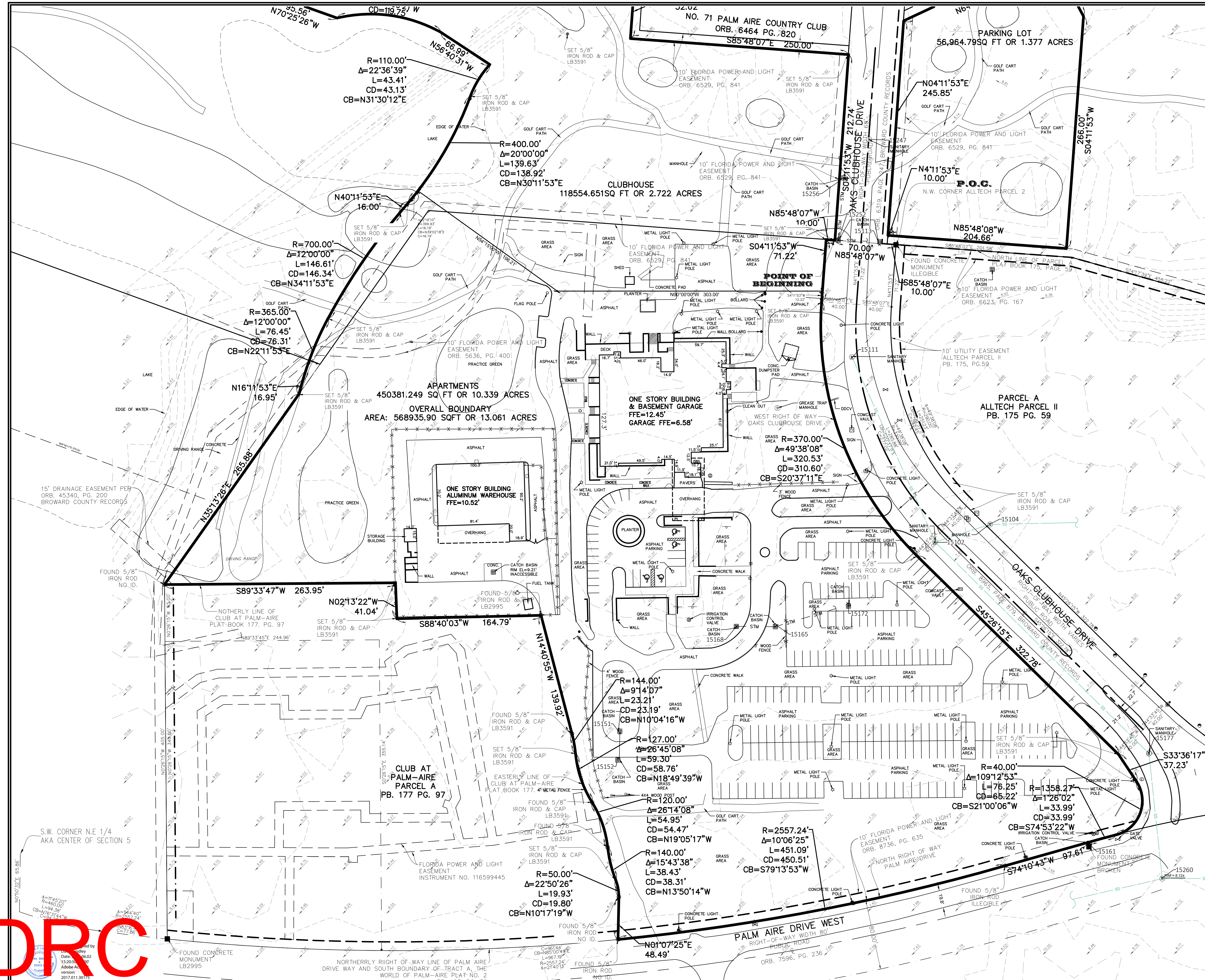
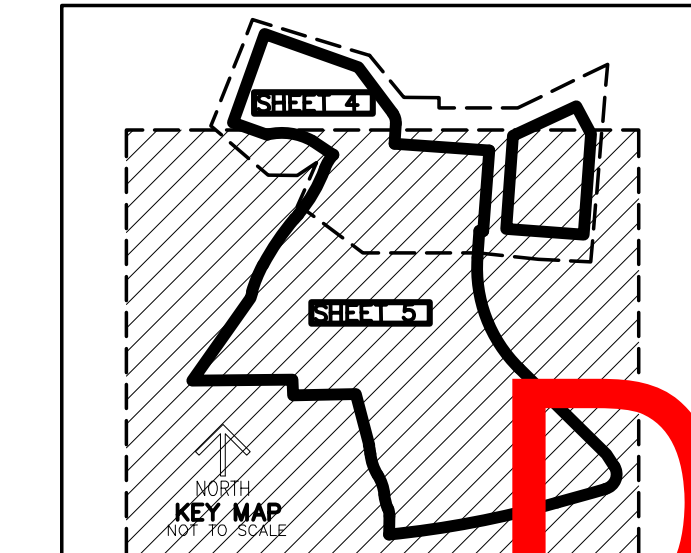


DRC

PZ23-12000017  
09/20/2023



STRUCTURE TABLE	
STRUCTURE NAME:	DETAILS:
15151 N:685900.1750' E:925618.8300'	CATCH BASIN RIM: 6.39' B.O.S.: 2.09' N: 2.67' 18" C.M.P. S: 2.63' 18" C.M.P.
15152 N:685871.6390' E:925616.3810'	CATCH BASIN RIM: 7.29' B.O.S.: 2.43' N: 2.59' 18" C.M.P. S: 2.66' 18" C.M.P.
15168 N:686022.1440' E:925752.0290'	CATCH BASIN RIM: 6.17' B.O.S.: 2.54' E: 3.07' 18" C.M.P. W: 3.20' 18" C.M.P.
15165 N:686022.9840' E:925798.3500'	CATCH BASIN RIM: 6.35' B.O.S.: 2.43' N: 3.29' 18" C.M.P. W: 3.23' 18" C.M.P.
15172 N:686048.4260' E:925879.3280'	CATCH BASIN RIM: 6.65' B.O.S.: 3.55' W: 3.74' 18" R.C.P.
15113 N:686458.4030' E:925915.5690'	CATCH BASIN RIM: 6.48' INACCESSIBLE
15252 N:686463.3860' E:925868.4940'	CATCH BASIN RIM: 6.39' B.O.S.: 0.35' N: 0.60' 18" R.C.P. SE: 3.70' 24" R.C.P.
15256 N:686534.6280' E:925874.7490'	CATCH BASIN RIM: 6.31' B.O.S.: 4.47' S: 4.63' 18" R.C.P.
15177 N:685877.8320' E:926223.1650'	SANITARY MANHOLE RIM: 8.19' N: -3.17' 8" PVC S: -3.32' 8" PVC
15102 N:686118.0790' E:925978.6990'	SANITARY MANHOLE RIM: 8.41' N: -1.20' 8" PVC S: -1.39' 8" PVC E: 0.10' 8" PVC
15104 N:686138.9170' E:926041.5090'	SANITARY MANHOLE RIM: 9.84' W: 0.39' 8" PVC E: 0.43' 8" PVC
15111 N:686329.0920' E:925884.1270'	SANITARY MANHOLE RIM: 7.71' N: -0.86' 8" PVC S: -1.00' 8" PVC
15247 N:686578.8540' E:925903.4230'	SANITARY MANHOLE RIM: 8.43' N: 0.17' 8" PVC S: 0.14' 8" PVC
15260 N:685734.6720' E:926238.6480'	SANITARY MANHOLE RIM: 8.12' N: -3.82' 8" PVC E: -3.79' 8" PVC W: -3.74' 8" PVC
15161 N:685774.7320' E:926153.9970'	CATCH BASIN RIM: 7.49' B.O.S.: 3.30' S: 3.38' 15" R.C.P.



\*LEGEND ON PAGE 1

REVISIONS	DATE	BY

**CAULFIELD & WHEELER, INC.**  
CIVIL ENGINEERING - LAND PLANNING  
LANDSCAPE ARCHITECTURE - SURVEY  
7900 GLADES ROAD - SUITE 100  
BOCA RATON, FLORIDA 33434  
PHONE (561) 392-1991 / FAX (561) 750-1452

**BOUNDARY SURVEY  
FOR OAKS @ PALM AIRE**

DATE 3-15-23  
DRAWN BY RSE  
F.B./ PG. ELEC  
SCALE SHOWN

OB # 10326  
T.NO.  
2 S-1.5  
SURVEY

PZ23-12000017  
07/19/2023