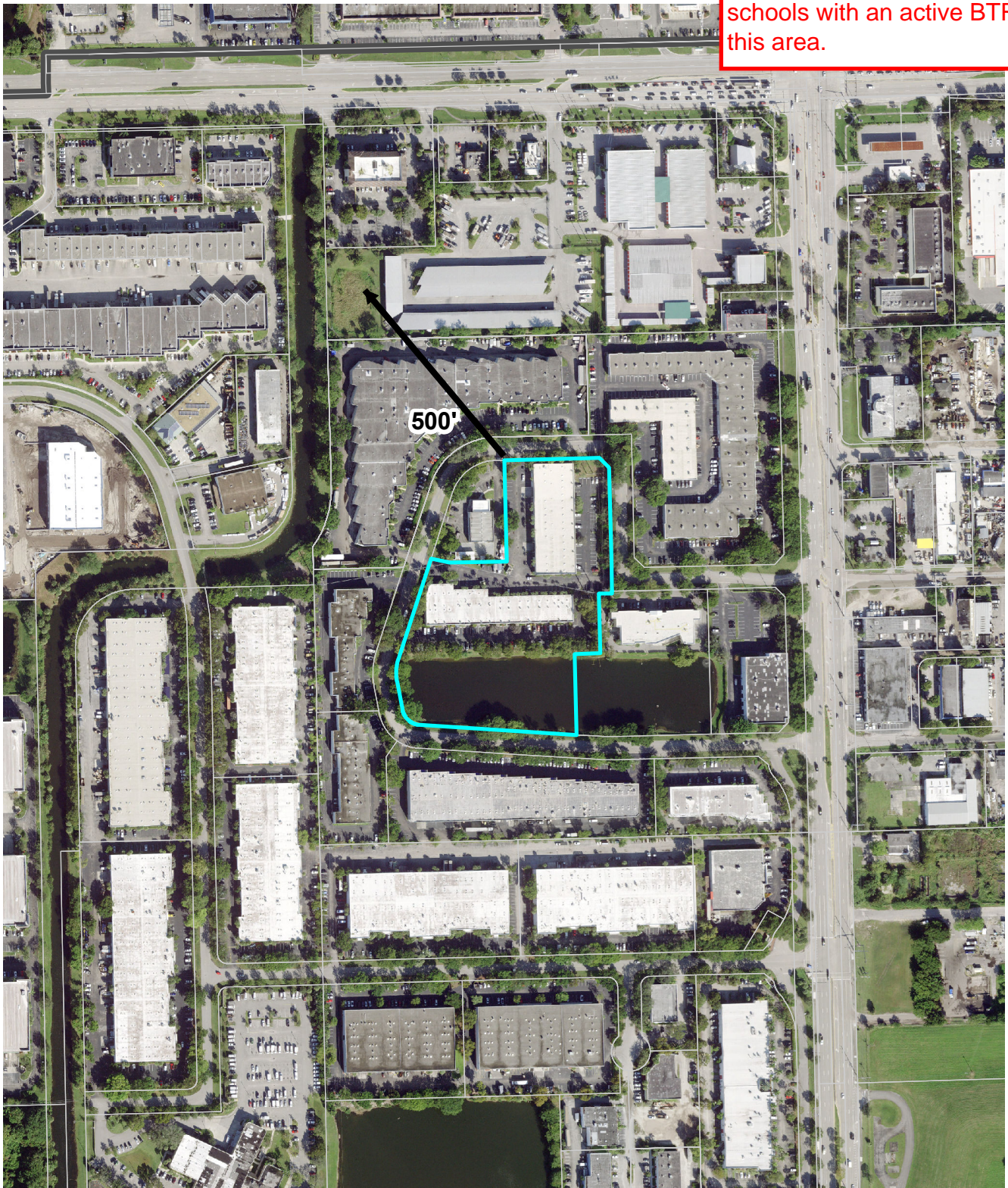


MEDICAL MARIJUANA ESTABLISHMENT

GOLD LEAF FLORIDA
3260 NW 23 Ave 1300-E

As of 8/14/2023, there are no public schools or private schools with an active BTR in this area.



500 LF CODE REQ: from a public or private elementary school, middle school or secondary school, measured by the shortest possible distance between the two property lines by airline route



1" = 375'