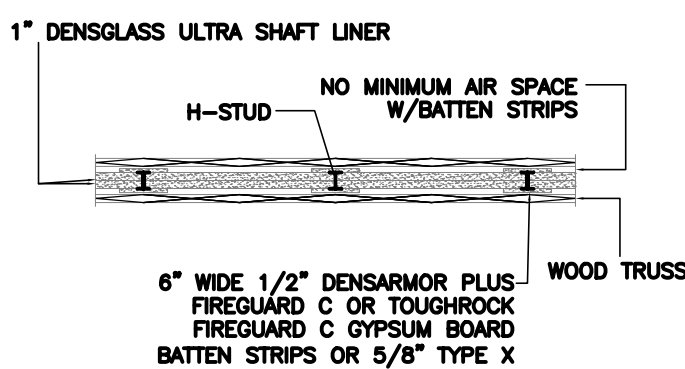


\*ATTIC DETAIL-ADJACENT TO TRUSSES

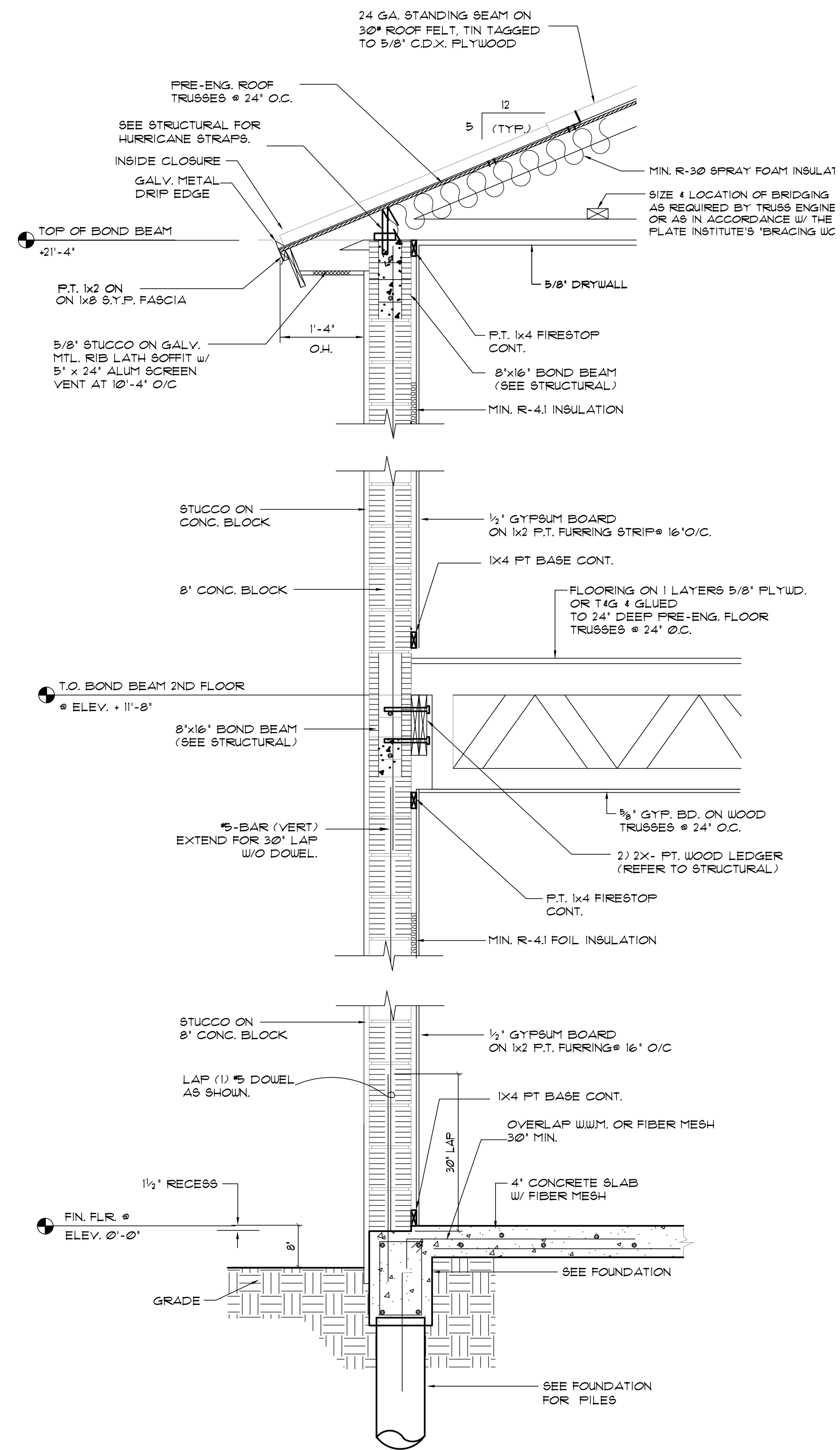
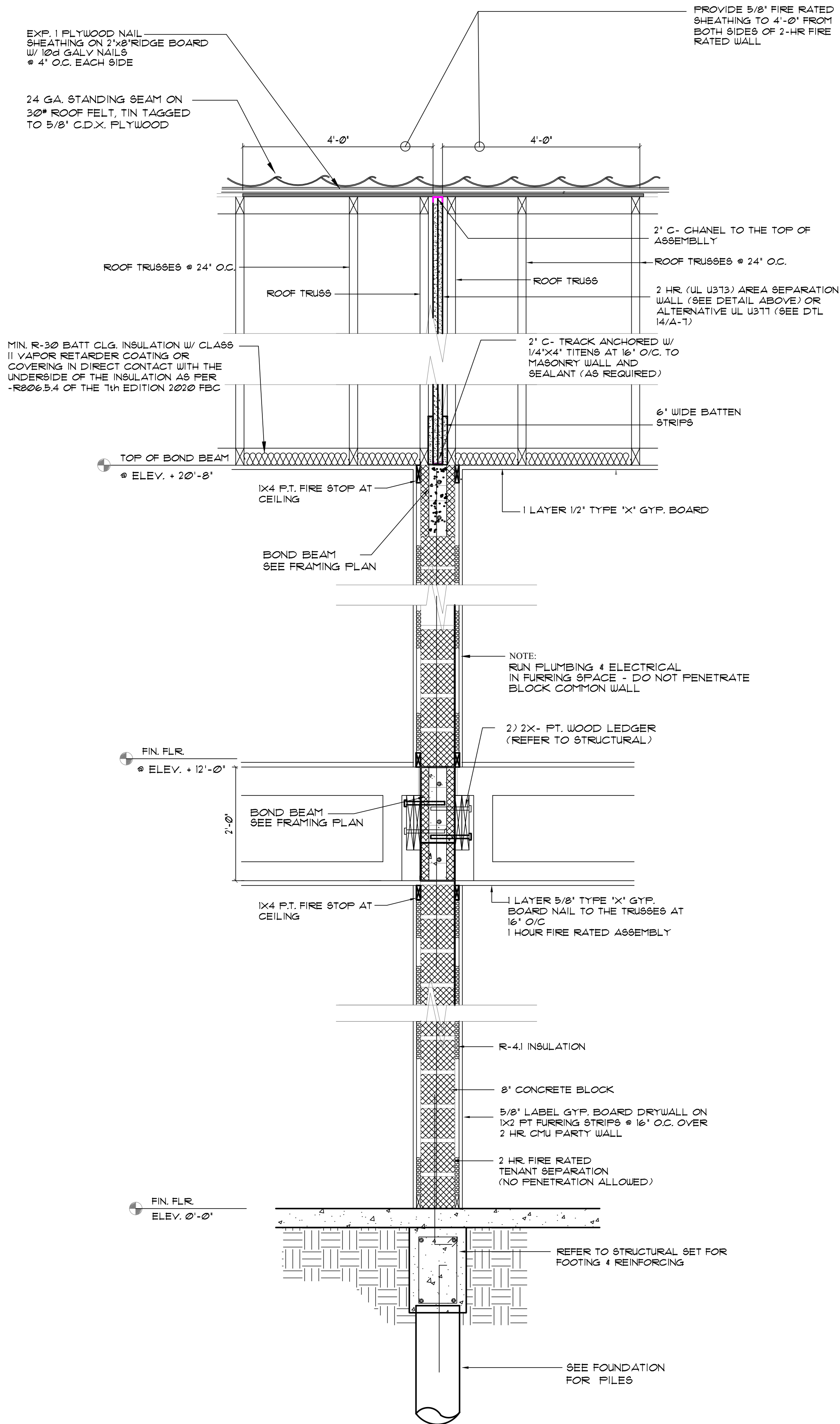


\*ONLY APPLIES IF SOLID WALL IS ACCESSIBLE. IF NOT ACCESSIBLE, THE 1/2" TYPE C STRIPS ARE NOT REQUIRED.

SEPARATION OF JOINTS, SEE DTL 14/A-7 FOR DETAILS. SEE DTL 14/A-7 FOR DETAILS. SEE DTL 14/A-7 FOR DETAILS.

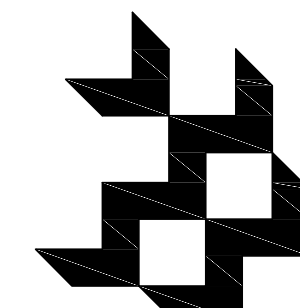
UL U373 (OR ALTERNATE UL 377 SEE DTL 14/A-7)

2 hr. WHI 694-0200.6 2 layers of 1/2" (12.7mm) Fire-Shield Shaftliner inserted in 2" H-Stud 24" o.c. (619mm). H-Studs and Track covered by 1/2" (12.7mm) Fire-Shield C or 5/8" Type X Gypsum 6" (152mm) wide strips. 35 NGC 2827



TYPICAL 2- STORY WALL SECTION

3/4"=1'-0"



Barretta & Associates  
Architecture  
Planning  
Design

Archila  
Design

GROUP  
ARCHITECTURE  
SERVICE

923 San Rafael Rd SW  
Palm Bay, FL 32908  
PHONE (321) 932-6470

N. RIVERSIDE  
3 UNIT TOWNHOUSE BLDG

554 N. RIVERSIDE DR.  
POMPANO BEACH, FL. 33062

Revisions:

All ideas designs arrangements and plans indicated or represented by this drawing are owned by, and the property of this office and were created, evolved and developed for the use on and in connection with the specified project. None of such ideas designs arrangements or plans shall be used by or disclosed to any person, firm or corporation for any purpose whatsoever without the written permission of BARRETTA & ASSOCIATES. Written dimensions on these drawings shall have precedence over scale dimensions. Contractors shall verify and be responsible for all dimensions and conditions on the job and this office must be notified of any variation from the dimensions and conditions shown by these drawings.

Seal

Digitally signed by James Barretta  
Date: 2021.05.05 15:58:00 -0400  
JAMES T. BARRETTA

WALL  
SECTIONS

Project No:

21-054

Scale: AS SHOWN

Drawn by: J.B.

Designed by: J.B.

Drawn by: OSCAR

Checked by: J.B.

Date: 5/03/2021

Sheet No:

19-A-8.2

©BARRETTA & ASSOCIATES, INC. 2021

7/07/2021

DRC

AR 0017415