

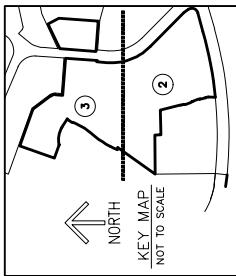
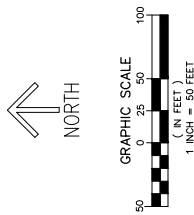
OAKS AT PALM AIRE

A PORTION OF LAND LYING IN SECTION 5, TOWNSHIP 49 SOUTH, RANGE 42 EAST, CITY OF POMPANO BEACH, BROWARD COUNTY, FLORIDA.

THIS INSTRUMENT PREPARED BY
RONNIE L. FURNISS

CAULFIELD and WHEELER, INC.

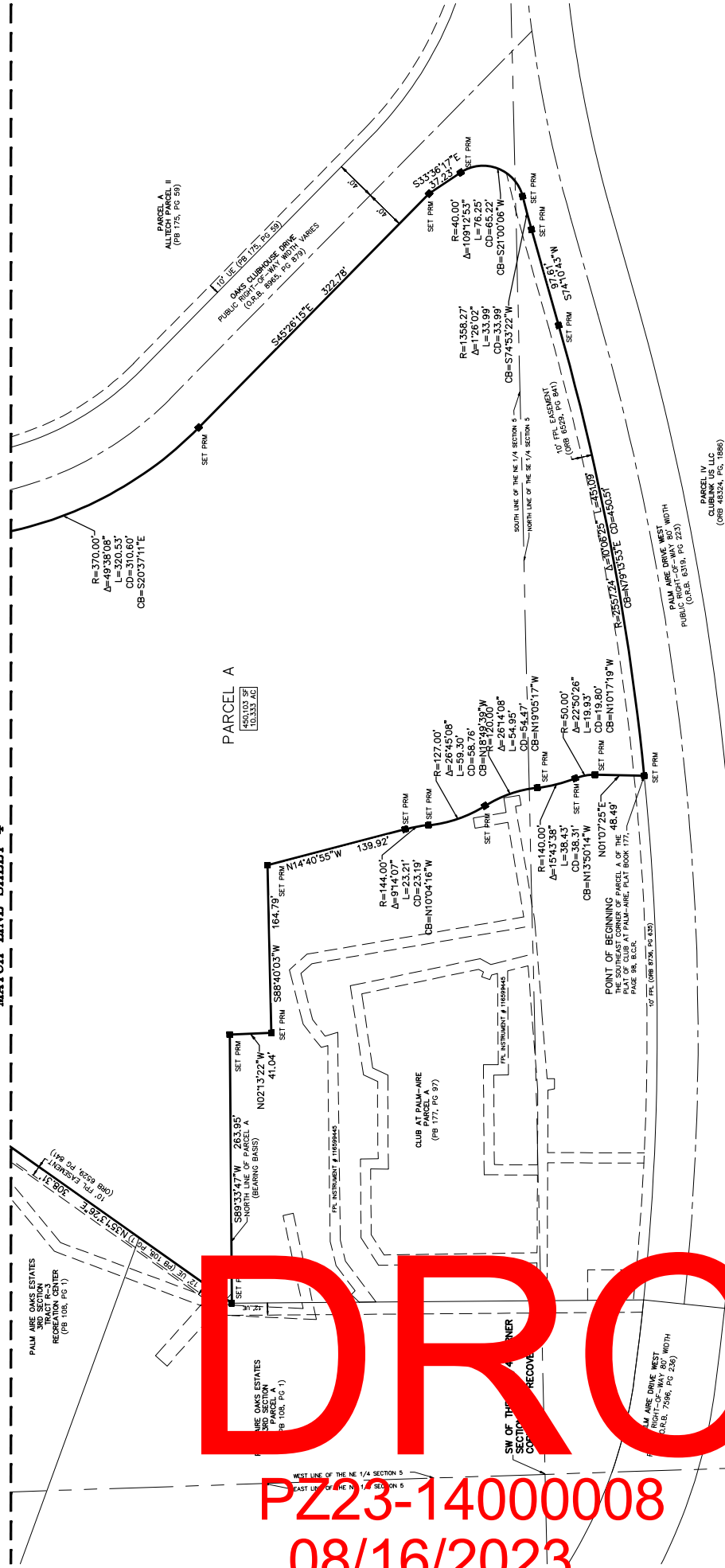
SURVEYORS - ENGINEERS - PLANNERS
7900 GLADES ROAD, SUITE 100
BOCA RATON, FLORIDA 33434 - (561)392-1991
CERTIFICATE OF AUTHORIZATION NO. LB3591



LEGEND / ABBREVIATIONS

A	DELTA (CENTRAL ANGLE)
AG	AGES
AC	ACCENT
CB	CHORD BEARING
CD	CHORD DISTANCE
CR	CRANK ELEMENT
FPL	FLORIDA POWER AND LIGHT
L	ARC LENGTH
LC	LICENSED RECORD
O.B.A.	OFFICIAL RECORD BOOK
PB	PLATE
PG	PLAT BOOK
R	RADIUS
(R)	INDICATES RADIAL LINE
RB	INDICATES RADIAL BEARING
TR	TRAIL
UE	UTILITY EASEMENT
PM	PERMANENT REFERENCE
5/8" IRON ROD WITH CAP	5/8" IRON ROD WITH CAP
6x48 PM LBS 3591*	6x48 PM LBS 3591*
●	PERMANENT CONSTRUCTION

MATCH LINE SHEET 4



WEST LINE OF THE NE 1/4 SECTION 5
EAST LINE OF THE NE 1/4 SECTION 5

P223-14000008
08/16/2023