

# EXHIBIT A



**IBI GROUP (Florida), Inc.**

AUTHORIZATION # LB 5610

ENGINEERS

SURVEYORS

PLANNERS

LANDSCAPE ARCHITECTS

ENVIRONMENTAL CONSULTANTS

2200 PARK CENTRAL BLVD. N.  
SUITE 100  
POMPANO BEACH, FLORIDA, 33064  
(954) 974-2200

2300 MAITLAND CENTER PARKWAY  
SUITE 101  
MAITLAND, FLORIDA, 32751  
(407) 660-2120

(SKETCH AND DESCRIPTION ONLY - NOT A SURVEY)

EXHIBIT "A"

## DESCRIPTION:

All of that certain 20 foot wide Florida Power and Light Easement lying in Tract "A", 1570 SW 13TH COURT PLAT, according to the plat thereof, as recorded in Plat Book 183, Pages 89 and 90, of the Public Records of Broward County, Florida, lying in Section 3, Township 49 South, Range 42 East, Broward County, Florida, and being more particularly described as follows:

BEGINNING at the Northeast corner of said Tract "A"; Thence South 00°07'20" East along the East boundary of said Tract "A", a distance of 350.00 feet; Thence departing from said boundary, run South 89°52'40" West, a distance of 20.00 feet; Thence North 00°07'20" West, a distance of 350.75 feet; Thence South 87°58'24" East along the North boundary of said Tract "A", a distance of 20.01 feet to the POINT OF BEGINNING.

Said lands lying in the City of Pompano Beach, Broward County, Florida.

Said lands containning 0.161 acres (7,008 square feet) more or less.

## NOTES:

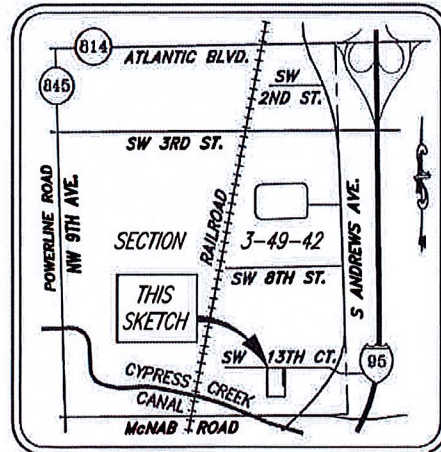
1. UNLESS IT BEARS THE SIGNATURE AND THE ORIGINAL RAISED SEAL OF A FLORIDA LICENSED SURVEYOR AND MAPPER THIS DRAWING, SKETCH, PLAT OR MAP IS FOR INFORMATIONAL PURPOSES ONLY AND IS NOT VALID. ADDITIONS OR DELETIONS TO SURVEY MAPS OR REPORTS BY OTHER THAN THE SIGNING PARTY OR PARTIES IS PROHIBITED WITHOUT WRITTEN CONSENT OF THE SIGNING PARTY OR PARTIES.

2. LANDS SHOWN HEREON WERE NOT ABSTRACTED BY IBI GROUP (FLORIDA) INC. FOR EASEMENTS AND RIGHTS-OF-WAY OF RECORD.

3. DATA SHOWN HEREON WAS COMPILED FROM OTHER INSTRUMENTS AND DOES NOT CONSTITUTE A FIELD SURVEY.

4. BEARINGS ARE BASED ON AN ASSUMED BEARING OF NORTH 00°07'20" WEST ALONG THE EAST LINE OF PARCEL "A", CUSTER INDUSTRIAL PARK, PLAT BOOK 146, PAGE 30, BROWARD COUNTY RECORDS.

5. IBI GROUP (FLORIDA) INC.'S CERTIFICATE OF AUTHORIZATION NO. LB5610 IS ISSUED BY THE FLORIDA DEPARTMENT OF AGRICULTURE AND CONSUMER SERVICES.



**LOCATION SKETCH**

NOT TO SCALE

## CERTIFICATION:

I HEREBY CERTIFY that the attached Sketch and Description is true and correct to the best of my knowledge and belief and that it meets the Standards of Practice set forth by the Florida Board of Professional Surveyors and Mappers in Chapter 5J-17, Florida Administrative Code.

7/14/17

For The Firm:  
IBI Group (Florida) Inc.

*William N. Field*  
WILLIAM N. FIELD, P.S.M.

PROFESSIONAL SURVEYOR and MAPPER #5999 STATE OF FLORIDA

DATE: 7/14/17	DRAWN BY: BF	CHECKED BY: WEW	FIELD BOOK: N/A
---------------	--------------	-----------------	-----------------

REVISIONS

DATE

BY

J:\106053\5.9 Drawings\59survey\current\20FT-FPL-ESMT-VACATE.dwg

SHEET 1 OF 2

106053

SKETCH NO.



# IBI GROUP (Florida), Inc.

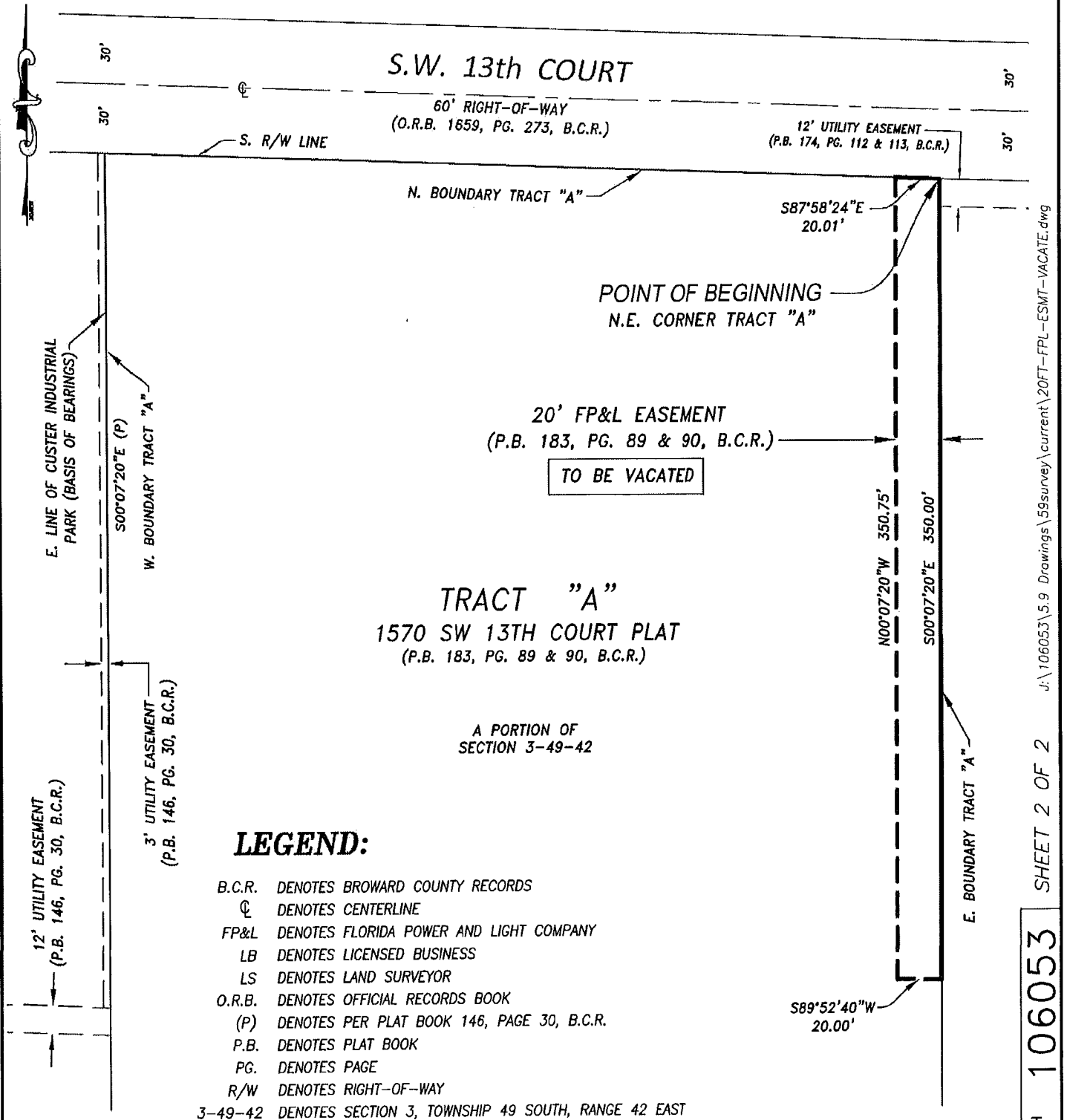
AUTHORIZATION # LB 5610

ENGINEERS SURVEYORS PLANNERS  
LANDSCAPE ARCHITECTS ENVIRONMENTAL CONSULTANTS

2200 PARK CENTRAL BLVD. N.  
SUITE 100  
POMPAHO BEACH, FLORIDA, 33064  
(954) 974-2200

2300 MAITLAND CENTER PARKWAY  
SUITE 101  
MAITLAND, FLORIDA, 32751  
(407) 660-2120

(SKETCH AND DESCRIPTION ONLY - NOT A SURVEY)



## LEGEND:

- B.C.R. DENOTES BROWARD COUNTY RECORDS  
CL DENOTES CENTERLINE  
FP&L DENOTES FLORIDA POWER AND LIGHT COMPANY  
LB DENOTES LICENSED BUSINESS  
LS DENOTES LAND SURVEYOR  
O.R.B. DENOTES OFFICIAL RECORDS BOOK  
(P) DENOTES PER PLAT BOOK 146, PAGE 30, B.C.R.  
P.B. DENOTES PLAT BOOK  
PG. DENOTES PAGE  
R/W DENOTES RIGHT-OF-WAY  
3-49-42 DENOTES SECTION 3, TOWNSHIP 49 SOUTH, RANGE 42 EAST

REVISIONS	DATE	BY	DATE:	DRAWN BY	CHECKED BY	FIELD BOOK
			7/14/17	BF	WEW	N/A

J:\106053\5.9 Drawings\59survey\current\20T-FPL-ESMT-VACATE.dwg

SHEET 2 OF 2

106053

SKETCH NO.