

City of Pompano Beach

Continuing Contract for Electrical Engineering Services

E-11-18

Hillers Electrical Engineering, Inc.
23257 State Road 7
Suite 100
Boca Raton, FL 33428
(561) 451-9165
Paul Hillers
February 27, 2018



Table of Contents

Letter of Interest	1
Technical Approach	4
Project Team Form	7
Organizational Chart	9
Statement of Skills and Experience of Project Team	11
Resumes of Key Personnel	19
References/City of Pompano Beach Projects.....	31
Office Locations	35
Litigation	37
Minority Business Enterprises	39
Forms (Included in Proposal)	41



Letter of Interest

February 27, 2018

City of Pompano Beach
Purchasing Office
1190 N.E. 3rd Avenue
Building C
Pompano Beach, Florida 33060

**Request for Letters of Interest
Continuing Contract for
Electrical Engineering Services
E-11-18**

To whom it may concern:

Hillers Electrical Engineering, Inc. is pleased to present our letter of interest and qualifications to provide Continuing Electrical Engineering Services to the City of Pompano Beach. Hillers Electrical Engineering has been providing Electrical Engineering Design and Construction Services to many municipalities since 1994 and we are strongly committed to continuing a successful relationship with the City of Pompano Beach.

Hillers Electrical Engineering has a proven full time in-house experienced staff of professionals who are able to provide the high-quality consulting services at any volume of assigned tasks the City may require. We are experienced, knowledgeable and are confident we will provide the depth of resources needed to successfully complete any task that this Continuing Contract for Electrical Engineering Services may entail.

For many years, Hillers has served the City as a sub-consultant on various projects. The working relationship we have established with your staff and the excellent performance we have demonstrated on past projects are invaluable to this new contract. Hillers offers the City of Pompano Beach familiarity with our staff and the sense of security in knowing that any project performed **will be done accurately, on schedule and within budget constraints.**

Hillers Electrical Engineering's design staff brings vast electrical, instrumentation and telemetry design and project management experience in a variety of areas such as raw water wells, ASR and DIW wells, water treatment facilities, water distribution systems, wastewater collection systems, wastewater treatment facilities including reuse, storm water and treatment pumping stations, airport terminals, airport runway-taxiway-apron lighting and navigational systems, sportsfield lighting, roadway and parking lot lighting, fire stations, etc..

The nature of consulting requires responsiveness which is the key to maintaining a long-term relationship. Hillers Electrical Engineering takes great pride in ensuring that we are immediately accessible and responsive to our client's needs. This is demonstrated in the excellent relationship we have established with many municipalities and environmental consulting firms. We are confident that our references will attest to the responsiveness, quality and integrity of our work.

Our office is fully equipped with state-of-the-art computer systems and engineering software to help ensure a quality and cost-effective product. Software programs include AutoCAD SKM fault current/coordination/arc flash program, generator sizing programs, and 3 dimensional lighting calculation programs.

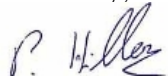
The City of Pompano Beach deserves a consultant who has extensive experience working with your staff and has a clear understanding of the City's means and methods for completing tasks assigned. Hillers knows your systems and has a proven track record to deliver the high level of consulting services the City requires, including meeting schedules and budgets.

Hillers Electrical Engineering, Inc. is a CCNA State of Florida Certified Minority Business Enterprise (A copy of the certificate is included with this proposal).

Hillers Electrical Engineering, Inc. provides the City of Pompano Beach with a cost effective, responsive and accessible team that has the technical expertise necessary to successfully serve the City. We appreciate the opportunity to present our qualifications and look forward to continuing our service to the City of Pompano Beach.

Please contact us if additional information is needed during the evaluation and selection process.

Sincerely,



Paul Hillers, P.E.
President
phillers@hillersee.com

Hillers Electrical Engineering, Inc.
23257 State Road 7, Suite100
Boca Raton, FL 33428
Phone: (561) 451-9165
Fax: (561) 451-4886
Tax ID # 65-0469356



Technical Approach

Hillers Electrical Engineering is dedicated to building long-lasting relationships with our clients and use proven processes and procedures in our Consulting Services. We understand that communication is one of the most important aspects of Consulting Services and through clear communication we strive to provide our clients with the most innovative, cost effective designs that are delivered on time and on budget. Hillers Electrical Engineering takes a hands-on approach in the design of projects, this allows us to gain a full understanding of the project and provide the best project specific solutions to the task. We utilize the following proactive approach, in conjunction with client staff, on all of our projects.

- Meet and establish the project goals
- Assist with the development of the Project scope of services
- Conduct design kickoff meetings to ensure that our projects from the start are meeting the expectation of our client
- Conduct field investigation of all projects with the design engineers for a fluid design
- Development of Drawings, Specification and Cost Estimate
- Provide oversight on multiple levels including our own In-House QA/QC Process
- Conduct review meetings to ensure that client feedback is included during the design process
- Incorporate client key personnel comments in conjunction with delivering projects on time
- All projects are reviewed with our experienced Construction field personnel to determine constructability of the design
- Conduct accurate in-house cost estimating throughout the design and value engineer when required.
- Provide bidding services to assist in the evaluation of potential bidders and pricing.
- Conduct construction services to support the client's staff.

Quality Control

HEE maintains a rigorous quality control/quality assurance (QA/QC) program where experienced senior staff (engineering and construction) review and cross-check designs for completeness, accuracy, code compliance, coordination and constructability.

Work documents subject to QA/QC checks include:



- Calculations
- Studies and reports
- Design drawings at each phase of development
- Technical specifications and other bidding documents
- Quantities and estimates

The QA/QC process includes the following steps:

- Origination: Preparation of the original technical discipline documents by the Lead Engineer
- Check: Check of the original technical discipline documents by a senior staff Quality Control Reviewer.
- Back-Check: Back-check of the documents by the Project Manager
- Verification: Verification of the back-checked documents by the senior staff Quality Control Reviewer

Cost Control

HEE is sensitive to project budget constraints and strives to maintain projects within budget and designs with budget constraints in mind. HEE performs opinion of probable construction cost at important design milestones to determine if the project is proceeding within the established budgets. If a design is exceeding an established budget, discussions are initiated with the owner to determine where modifications to the project can be made to bring it back to within budget. The table below demonstrates a small sampling of how Hillers Electrical Engineering is fiscally responsible and designs within budget.

Project Name	HEE Cost Estimate	Actual Bid	% Change
Palm Beach County Air Flow Meters & Digester Gas Safety Meters	\$1,856,780	\$1,756,788	5%
Palm Beach County WTP 9 Wellfield Control Panel & RTU Improvements	\$1,258,750	\$1,165,468	7% 
Palm Beach County Telemetry Information Management System Upgrade	\$1,099,550	\$1,098,799	0%
Palm Beach County WTP#3 VFD's for Transfer Pumps	\$ 369,200	\$ 296,700	20%
Palm Beach County Royal Palm Beach Lift Station RTU Upgrade	\$ 763,784	\$ 753,125	1% 



Project Team Form

COMPLETE THE PROJECT TEAM FORM ON THE ATTACHMENTS TAB IN THE EBID SYSTEM. PROPOSERS ARE TO COMPLETE FORM IN ITS ENTIRITY AND INCLUDE THE FORM IN YOUR PROPOSAL THAT MUST BE UPLOADED TO THE RESPONSE ATTACHMENTS TAB FOR THE RLI IN THE EBID SYSTEM.

PROJECT TEAM

RLI NUMBER _____

Federal I.D.# _____

PRIME

Role	Name of Individual Assigned to Project	Number of Years Experience	Education, Degrees
Principal-In-Charge	_____	_____	_____
Project Manager	_____	_____	_____
Asst. Project Manager	_____	_____	_____
Other Key Member	_____	_____	_____
Other Key Member	_____	_____	_____

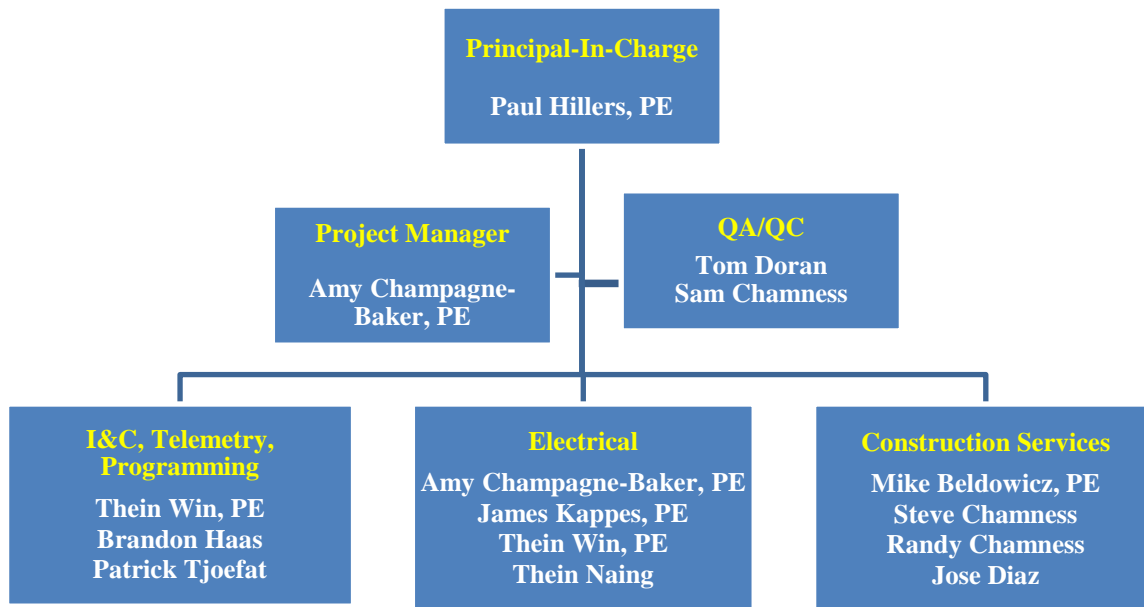
SUB-CONSULTANT

Role	Company Name and Address of Office Handling This Project	Name of Individual Assigned to the Project
Surveying	_____ _____	_____ _____
Landscaping	_____ _____	_____ _____
Engineering	_____ _____	_____ _____
Other Key Member	_____ _____	_____ _____
Other Key Member	_____ _____	_____ _____
Other Key Member	_____ _____	_____ _____
Other Key Member	_____ _____	_____ _____

(use attachments if necessary)



Organizational Chart



HILLERS KEY MEMBERS

NAME	EXPERIENCE	LICENSES	EDUCATION
Paul Hillers, P.E.	<ul style="list-style-type: none"> * 37 years electrical design, I&C, construction services * President of HEE for 24 years * Water Treatment: Membrane, Lime Softening, Wells * Wastewater: Collection, Treatment, Disposal, Reclaim * Pumping Stations: Master Lift Stations, Master Pump Stations, Re-pump Facilities, Stormwater * Photometric analysis * Aviation Facility and Airfield Design and Construction Services * SCADA/Telemetry Systems 	PE#41022	MSEE, 1981 BSEE, 1979 Louisiana State University
Amy Champagne-Baker, P.E.	<ul style="list-style-type: none"> * 21 years electrical design, I&C, SCADA, Telemetry * Senior Electrical, I&C Engineer: 21 years with HEE * Photometric analysis * Aviation Facility and Airfield Design and Construction Services * Wastewater: Collection, Treatment, Disposal, Reclaim * Pumping Stations: Master Lift Stations, Master Pump Stations, Re-pump Facilities, Stormwater 	PE#73735	BSEE, 1997 Clarkson University
James Kappes, P.E.	<ul style="list-style-type: none"> * 13 years electrical design, I&C, SCADA, Telemetry * Electrical, I&C Engineer: 13 years with HEE * Photometric analysis * Aviation Facility and Airfield Design and Construction Services * Wastewater: Collection, Treatment, Disposal, Reclaim * Pumping Stations: Master Lift Stations, Master Pump Stations, Re-pump Facilities, Stormwater 	PE#71499	BSEE, 2005 Florida Atlantic University



Statement of Skills and Experience of Project Team



Statement of Skills and Experience

Over our history, we have established long term relationship with the City of Pompano Beach as well as many other additional municipalities and governmental agencies including:

- Palm Beach County Water Utilities
- Broward County Water and Waste Water Services
- City of Orlando Utilities
- City of Boca Raton Utilities
- South Florida Water Management District
- Palm Beach Department of Airports
- Broward County Aviation Department
- South Central Water Treatment and Disposal Board (SCWTDB)
- City of West Palm Beach Utilities
- City of Sunrise Utilities
- City of Hollywood Utilities
- Solid Waste Authority of Palm Beach
- East Central Regional Water Reclamation Facility (ECRWF) Board of Directors

We also have long standing relationships with many of the prominent environmental engineering firms in the South Florida area including:

- Kimley-Horn and Associates, Inc.
- Hazen and Sawyer, PC
- Mock-Roos & Associates
- Brown and Caldwell
- CH2MHill
- Calvin Giordano and Associates
- Holtz Consulting Engineer

For this contract the following key individuals will be assigned:

Principal-In-Charge - Paul Hillers, PE, President	
Location	23257 State Road 7, Suite 100 Boca Raton, FL 33428
Contact Info	Phone: (561) 451-9165 X221 Email: phillers@hillersee.com
Education	Master of Science Electrical Engineering, 1981 Louisiana State University Bachelor of Science in Electrical Engineering, 1979, Cum Laude Louisiana State University
Licenses	PE#41022
Experience	37 years of electrical, instrumentation, control, SCADA and telemetry systems design and construction management.



Project Manager – Amy Champagne-Baker, P.E., Senior Electrical Engineer	
Location	23257 State Road 7, Suite 100 Boca Raton, FL 33428
Contact Info	Phone: (561) 451-9165 X224 Email: achampagne@hillersee.com
Education	Bachelor of Science Electrical Engineering, Clarkson University, 1997
Licenses	PE#73735
Experience	21 years of electrical, instrumentation, control, SCADA and telemetry systems design and construction management.

HEE provides a variety of engineering service tasks including:

HILLERS ELECTRICAL ENGINEERING EXPERIENCE	
Electrical Power Distribution Systems: Low and Medium Voltage	X
Emergency Power Systems	X
Motor Control Systems	X
Lighting	X
Grounding/Bonding	X
Lighting Protection and Surge Protection Systems	X
Fire Alarm Systems	X
Communication Systems Including Networking	X
Plan Process Control Systems	X
Plant Process Instrumentation Systems	X
SCADA Systems	X
Telemetry Systems	X
PLC, HMI Programming	X
Master Plan Studies	X
Condition Assessment Studies	X
Short Circuit- Device Coordination and Arc Flash Studies	X
Constructability Reviews	X
Utility Service Coordination	X
Construction Inspection Services	X

Pompano Beach Extension of Taxiway Golf

Hillers Electrical Engineering performed an electrical design for the extension of Taxiway Golf at Pompano Beach Airpark

Project Highlights:

- Designed new taxiway edge lighting systems
- Designed new runway edge lighting systems
- New mandatory & guidance signage
- Navigational Aid modifications
- New junction can plazas and ductbank systems
- Airfield lighting vault modifications



Owner:

City Pompano Beach, FL

Steve Zielnicki, P.E.

Project Manager III

T: (954) 786-5520

E-mail: steve.zielnicki@copbfl.com

Project Cost: \$1.2M

Pompano Beach Municipal Golf Course Parking Lot Lighting

Hillers Electrical Engineering performed an electrical design for the Pompano Beach Municipal Golf Course Parking Lot Lighting

Project Highlights:

- Performed Photometric Calculations
- Designed lighting systems
- Design conduit and conductor systems



Owner:

City Pompano Beach, FL

Anthony Alhashemi

Project Manager

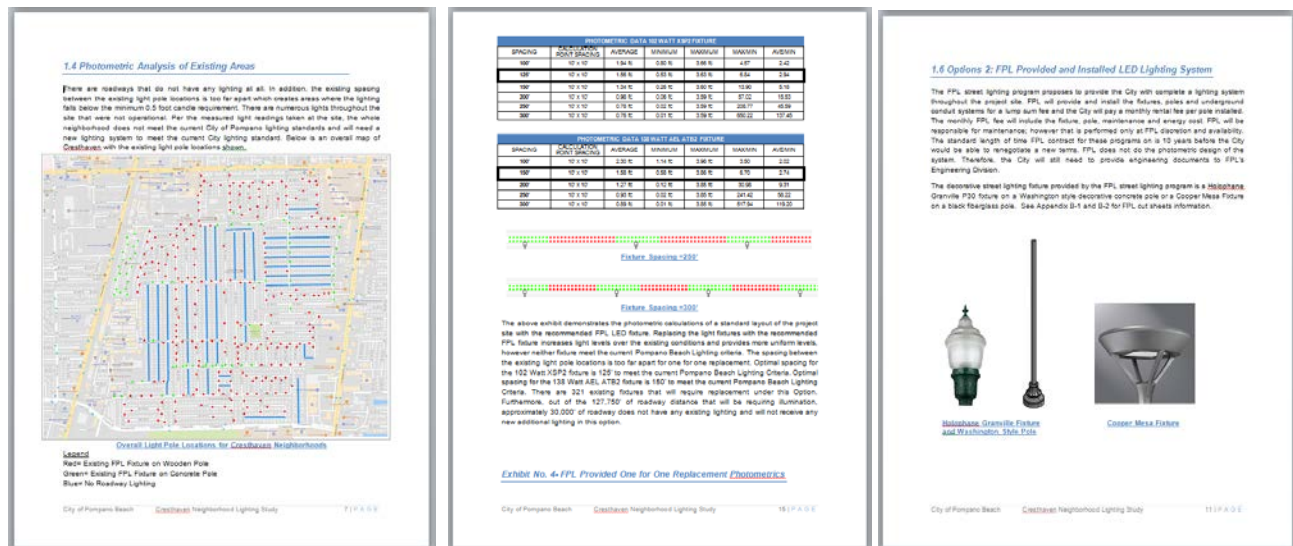
T: (954) 786-4029

Email: Anthony.Alhashemi@copbfl.com

Project Cost: \$123,000

Pompano Beach Neighborhood Lighting Study

Hillers Electrical Engineering completed a lighting assessment for three large neighborhoods in Pompano Beach: Cresthaven, Highlands and Liberty Park. Hillers Electrical Engineering visited the neighborhoods and documented the location and type of light fixture and conducted lighting test to determine the existing lighting levels that was in each community. We performed different lighting scenarios utilizing photometric lighting calculation software to determine the recommended replacement fixture and spacing to meet Pompano Beach Lighting Codes. Hillers also provided cost estimating for comparison of Owner furnished systems and FPL provided and installed systems.



Project Highlights:

- Performed Photometric Calculations
- Performed Cost Estimating
- Created document with recommendations of different lighting systems for Pompano Beach's considerations

Owner:

City Pompano Beach, FL

Horacio Danovich

CIP Manager

T: (954) 786-7834

E-mail: Horacio.Danovich@copbfl.com

Project Cost: \$41,400

Fort Lauderdale / Hollywood International Airport - Terminal 4 Gate Replacement Western Expansion (WP403) and Eastern Expansion Phases (WP407).

Hillers Electrical Engineering (HEE) provided design services for the new Terminal 4 Gate Replacement Project at Ft Lauderdale International Airport. The project included the demolition of the existing Concourse H for Terminal 4 along with design of a new 14 gate replacement, while keeping the existing Terminal operational to International passengers. The design and construction was broken into a Western and Eastern phases, WP403 & WP407 respectively.

Project Highlights:

- Designed all electrical 480V and 4160V electrical distribution systems
- Coordinated with FPL for the design of 2-15MW utility vaults
- Designed life safety and emergency power systems for all areas of the Project.
- Designed lighting and control systems for all levels
- Designed apron lighting system
- Designed electrical systems for the Chiller plant expansion.
- Designed and integrated new fire alarm system with existing infrastructure.
- Designed TSA and CBP areas throughout the new International Terminal
- Designed electrical, fire alarm and lighting systems for the BCAD Administration levels



Owner: Broward County Aviation Department
 Curtis Celestine
 T: 954-359-6100
ccelestine@broward.org

Electrical Construction Cost \$20M

Palm Beach County Water Utilities Water Treatment Plant 9 2MW Generator Replacement

Hillers Electrical Engineering provided electrical, instrumentation and control design and construction inspection services for construction of PBCWUD WTP9 generator replacement project. The project consists of removing the existing generator and installing a new Tier 4 Final rated 2MW generator.

Project Highlights:

- Design removal of the existing generator.
- Design of new Tier 4F rated generator, including aftertreatment clean emission module system, urea system, and air compressor system
- Design of new conduit/wiring system for new generator
- Design new piping and transfer pump for the urea system
- Design instruments associated with urea tank and generator aftertreatment system
- Design new signals connection points back to the Plant PLC system



Owner and Client:
PBCWUD
8100 Forest Hill Blvd,
West Palm Beach,
FL 33416

Total Project Cost: \$1,600,000.00



Resumes of Key Personnel



Paul F. Hillers, P.E., President
Hillers Electrical Engineering, Inc.

Education

Master of Science in Electrical Engineering, 1981
Louisiana State University
Bachelor of Science in Electrical Engineering, 1979
Cum Laude
Louisiana State University

Professional Registration

Registered Electrical Engineer, Florida No. 41022

Experience

37 years of electrical, instrumentation & control system design and construction management.

Hillers Electrical Engineering, Inc., 1994 to present

Mr. Hillers is skilled in electrical design and he has proven electrical design and project management experience with water and wastewater facilities, supervisory control and data acquisition (SCADA) systems, water management pumping stations, structures, lift stations, state-of-the-art distributed control systems, variable frequency speed drive analysis for facility efficiency improvements, ASR wells, industrial load control program systems for large industrial power users, value engineering, energy audits, cost estimates, testing, startups, lighting systems, security systems, low and medium voltage distribution systems, normal and stand-by generation, short circuit calculations, fault current calculations, protective device coordination and power, control, instrumentation for major fuel storage and refining facilities in the U.S. and internationally.

Transportation experience includes lighting and power distribution design for Florida Department of Transportation major roadways, interchanges, bridge exterior and interior electrical and lighting systems, signage systems, including illumination and voltage drop calculations, pole locations, power supply and distribution, 100% plans and project review process, coordination with utilities departments, writing specifications and completing estimates and tabulation quantities for state, county, and municipal agencies in the state of Florida

His practice areas include: water and wastewater treatment facilities; master lift stations; water reuse facilities; storm water pumping stations; operational and maintenance complexes; water control structures; aquifer storage and recovery (ASR) wells; solid waste facilities.

Skills include: specification creation; value engineering; energy analysis; testing; cost estimates; start-up; onsite inspections.



Project Experience

Project Manager, WTP 9 Emergency Generator Replacement, Palm Beach County, FL

Provided electrical design and construction inspection services for replacement emergency generator that meets current EPA requirements (Tier 4 Final rating). Project includes designing new Tier 4 Final generator, new After-treatment system, Urea system, exhaust silencers, as well as temporary generator during the construction period.

Project Manager, Co-generation System, NRWWTP, Broward County Water and Wastewater Services

Performed electrical, instrumentation and control system engineering and design to integrate a single 1999 kW internal combustion gas engine-generators operating on digester gas into the plant power distribution and SCADA system. Generator output is 4.16kV, three-phase, 60 hertz and is integrated with plant main power distribution system. Project also included the design of a new fats, oils and grease (FOG) facility.

Project Manager, WTP 2 Filter Replacement, Palm Beach County, FL

Provided Electrical, Fire Alarm, and instrumentation & control design for New Filters at WTP2, including designing new electrical distribution for the Filter Building and process, new switchboard, new motor control center (MCC), new variable frequency drives (VFD's), new solid state reduced voltage starters (SSRVS). Instrumentation and control/SCADA and new PLC control panel, RIO panel. New Fire Alarm System compliance with County ESS department requirements is also included.

Project Manager, WTP 9 SCADA and PLC Improvements, Palm Beach County, FL

Provided the instrumentation design, PLC programming and construction services for the PBC WTP 9 PLC replacement project. The PLC-5 system was replaced with a newer generation Control Logix PLC system. Designed and identified the replacement components for each existing PLC-5 and the related remote I/O (RIO) parts and performed a temporary installation to keep both the existing and the new PLC systems running in parallel. The existing system was replaced one-by-one to minimize the downtime and interruption of the existing RO water treatment process. A new PLC program was written for the Control Logix PLC system

Electrical, Instrumentation and Control Chief Electrical Engineer, Everglades Agricultural Area (EAA) A-1 Flow Equalization (FEB) Project, South Florida Water Management District, FL

The EAA A-1 FEB Project design and construction created approximately 15,000 acres of shallow detention basin with an estimated design average depth of four (4) feet. Performed the Electrical, Instrumentation and Control, SCADA and Telemetry design and construction management services for the EAA A-1 Flow Equalization Basin Project. Project electrical design components included two roller gate inflow structures, slide gate outflow structure, ten solar powered slide gate outflow structures. SCADA design included instrumentation and control for monitoring FEB water levels and remote operation of the inflow and outflow structures from South Florida Water Management



District Headquarters. Telemetry designed for radio communication via Motorola ACE and CR1000 Remote Telemetry Units (RTU) to communicate with the South Florida Water Management District existing backbone microwave communication infrastructure.



**Amy L. Champagne-Baker, P.E., Senior Electrical Engineer
Hillers Electrical Engineering, Inc.**

Education

Bachelor of Science in Electrical Engineering, 1997
Clarkson University
Professional Registration
Registered Electrical Engineer, Florida No. 73735
Registered Electrical Engineer, Connecticut No. 27854

Experience

21 years electrical design and construction management

Design and construction services experience includes electrical distribution, medium and low voltage systems, communication, lighting, security, access control, baggage handling, fire alarms systems, CCTV, normal and standby generation systems, lift stations, and on site construction services for main airport terminal buildings, airfields, county administration & maintenance facilities.

Airport experience includes runway, taxiway, centerline, runway guard lights, wig-wags, apron and approach lighting systems for major air carrier and general aviation airports, guidance and mandatory signage, MALSR, LAHSO, PAPI, REIL, ODALs, glideslope, instrument landing systems, FAA relocation of RT and RR facilities, FAA coordination, airfield lighting control systems, airfield electrical vaults, aircraft maintenance hangars, T hangars, fuel systems, security systems, parking garages, and park and ride lighting.

Transportation experience includes lighting and power distribution design for Florida Department of Transportation major roadways, interchanges, bridge exterior and interior electrical and lighting systems, signage systems, including illumination and voltage drop calculations, pole locations, power supply and distribution, 100% plans and project review process, coordination with utilities departments, writing specifications and completing estimates and tabulation quantities for state, county, and municipal agencies in the state of Florida.

Sports lighting, electrical distribution, site lighting, parking lot lighting, testing of existing electrical systems, communications, public address and scoreboard systems design and construction management for professional, minor and recreational football, baseball, soccer, tennis, hockey, basketball and roller hockey complexes owned by county, municipal agencies and private developers.

Responsibilities included estimating, project budgeting, contract administration, scheduling, staffing, resource allocation, subcontracts, submittals, purchasing, client/owner interaction, cost analysis, labor tracking, quality, value engineering, change orders, invoicing and project close out.

Proficiency with AutoCAD, MicroStation, SKM Power Tools™ for Windows DAPPER, CAPTOR, LitePRO, GE Lighting Systems Aladan + Plus.



Professional Membership

LEED Accredited Professional

Project Experience

Ft. Lauderdale International Airport - FLL WP-304/305 Runway, Crossfield Taxiways & Holdpad Paving, Lighting and Signage

Provided design services for the new 8,000ft Runway 10R-28L project at Ft Lauderdale International Airport. Project included demolition of existing runway and taxiway lighting and signage systems, design of new runway and taxiway lighting systems, modification of airfield electrical vault, new ductbank systems, new navigational aids, lighting systems.

Fort Lauderdale / Hollywood International Airport- Terminal 4 Western Expansion, Fort Lauderdale, FL.

Included on-site verifications, testing and calculations, designed all power, control and lighting systems, fire alarm system, infrastructure for baggage handling systems, 4160V Emergency power expansion, apron lighting, TSA & US Customs screening areas power & lighting systems.

Fort Lauderdale / Hollywood International Airport- Terminal 4 Eastern Expansion, Fort Lauderdale, FL.

Included on-site verifications, testing and calculations, designed all power, control and lighting systems, fire alarm system, infrastructure for baggage handling systems, 4160V Emergency power expansion, apron lighting, TSA & US Customs screening areas power & lighting systems.

Fort Lauderdale/Hollywood International Airport – New Airfield Vault Electrical Normal & Emergency Power Distribution Systems.

Included calculations, layouts, circuitry new distribution systems with main switchgear, transfer switches, conduit systems to all the airfield lighting & NAVAID systems.

Fort Lauderdale / Hollywood International Airport Designed & Construction Services - Airfield Modifications 3 High Speed Exit Taxiways & Taxiways A & B Rehabilitation Project, Ft. Lauderdale, FL

Design: Included new runway & taxiway lighting and signage systems, modifications to existing FAA MALSR approach lighting system, complete new runway in pavement guard lighting system, relocation of existing 4 box PAPI system, complete new computer controlled airfield lighting systems in airfield lighting vault and in FAA air traffic control tower and modifications to the existing airfield lighting vault that included new regulators, power & control systems.



Palm Beach County Department of Airports- 4100 ft. Taxiway “F” Extension Lighting & Signage, West Palm Beach, FL

Design: Included new taxiway edge lighting, new mandatory & guidance signage, new electrical circuits conductors & conduit systems, FAA ILS cabling systems relocations, airfield lighting vault current regulators and modifications to the ATC airfield lighting control system and NAVAIDS modifications.

Palm Beach County Department of Airports- New Apron “A” Expansion, West Palm Beach, FL

Design: Included on-site verifications, testing and calculations, main PBIA Westside power and communications duct banks for FP&L, AT&T, PBI and FAA air traffic control tower, (3) new vehicle security gates with access control & security camera and emergency powers systems, apron & taxiway lighting & signage systems, apron aircraft parking security lighting and grounding systems.



James William Kappes, P.E., Electrical Engineer
Hillers Electrical Engineering, Inc.

Education

Bachelor of Science in Electrical Engineering, 2005
Florida Atlantic University
Professional Registration
Registered Electrical Engineer, Florida No. 71499

Experience

13 years electrical design and construction management

Design and construction services experience includes: electrical distribution, control and communication systems for water-waste water facilities and storm water pumping facilities; medium and low voltage systems; control; communication; lighting; security; access control; fire alarms; normal and standby generation systems; lift stations; inspections of existing facilities; county administration and maintenance facilities.

Transportation experience includes lighting and power distribution design for Florida Department of Transportation major roadways, interchanges, bridge exterior and interior electrical and lighting systems, signage systems, including illumination and voltage drop calculations, pole locations, power supply and distribution, 100% plans and project review process, coordination with utilities departments, writing specifications and completing estimates and tabulation quantities for state, county, and municipal agencies in the state of Florida.

Sports lighting, electrical distribution, site lighting, parking lot lighting, testing of existing electrical systems, communications, public address and scoreboard systems design and construction management for minor and recreational football, baseball, and soccer complexes owned by county, municipal agencies and private developers.

Water and waste water experience includes control and communication systems for water-waste water facilities and storm water pumping facilities.

Airport experience includes runway, taxiway, centerline, runway guard lights, apron and approach lighting systems for major air carrier and general aviation airports, guidance and mandatory signage, MALSR, LAHSO, PAPI, REIL and NAVAID systems, instrumentation landing systems, FAA coordination, airfield lighting control systems, airfield electrical vaults, aircraft maintenance hangars, T hangars, fuel systems, and security systems.

Responsibilities included estimating, project budgeting, contract administration, scheduling, staffing, submittals, client/owner interaction, cost analysis, labor tracking, quality, value engineering, change orders, invoicing and project close out.

Proficiency with SKM, AutoCAD, LitePRO, GE Lighting Systems Aladan + Plus.



Project Experience

Fort Lauderdale / Hollywood International Airport- Terminal 4 Western Expansion, Fort Lauderdale, FL.

Included on-site verifications, testing and calculations, designed all power, control and lighting systems, fire alarm system, infrastructure for baggage handling systems, 4160V Emergency power expansion, apron lighting, TSA & US Customs screening areas power & lighting systems.

Fort Lauderdale / Hollywood International Airport- Terminal 4 Eastern Expansion, Fort Lauderdale, FL.

Included on-site verifications, testing and calculations, designed all power, control and lighting systems, fire alarm system, infrastructure for baggage handling systems, 4160V Emergency power expansion, apron lighting, TSA & US Customs screening areas power & lighting systems.

Miami Dade Aviation Department - Miami International Airport R/W 27L Threshold Relocation Pavement Improvements, Miami, Florida

Design: Included Runway centerline and edge lighting systems modifications, relocation of in-pavement threshold bar, (2) two in-pavement FAA MALSR systems modifications, replacement of edge and centerline circuit conductors and transformers and modifications to existing airfield lighting computer controlled system.

Palm Beach County Department of Airports - 5000 ft. Parallel Taxiway “L-East Extension” Lighting & Signage, West Palm Beach, FL

Design: Included new taxiway edge lighting, new runway guard lighting system, new mandatory & guidance signage, new electrical circuits conductors & conduit systems, FAA ILS Glide Slope relocation, new FAA fiber optic duct bank and airfield lighting vault new current regulators & modifications and new ALCMS airfield lighting computer control system in existing and new FAA ATC.

Broward County Aviation Department - Fort Lauderdale / Hollywood International Airport Designed & Construction services: Airfield Modifications 3 High Speed Exit Taxiways & Taxiways A & B Rehabilitation Project, Ft. Lauderdale, FL

Design: Included new runway & taxiway lighting and signage systems, modifications to existing FAA MALSR approach lighting system, complete new runway in pavement guard lighting system, relocation of existing 4 box PAPI system, complete new computer controlled airfield lighting systems in airfield lighting vault and in FAA air traffic control tower and modifications to the existing airfield lighting vault that included new regulators, power & control systems.



Michael R. Beldowicz, P.E., Professional Engineer
Hillers Electrical Engineering, Inc.

Education

Bachelor of Science in Civil Engineering, 2000
Embry Riddle Aeronautical University
Professional Registration
Registered Civil Engineer, Florida No. 63849

Experience

18 years airfield design and construction management

Electrical and I&C design and construction management experience includes project management, installation supervision, shop drawing submittal review, testing, start-ups and construction observation of high, medium and low voltage distribution systems, instrumentation and control systems, interior and exterior lighting systems, fire alarm and security systems, camera systems, time and attendance, telephone systems, normal and stand-by emergency generation systems and power, FDOT roadways, air carrier and general aviation airports, parking and site lighting.

Responsibilities included estimating, project budgeting, contract administration, scheduling, staffing, resource allocation, subcontracts, submittals, purchasing, client/owner interaction, cost analysis, labor tracking, quality, value engineering, change orders, invoicing and project close out.

Project Experience

Palm Beach International Airport- Construct Golfview Infrastructure Phase 1.

Full time construction oversight to install infrastructure to support the future development of the area referred to as Golfview at PBI. Installation included ductbanks to support FPL, AT&T, Comcast and Airport communications and a new service point for new street lighting and a lift station. Required extensive coordination with the utility agencies in order to phase the work such that there were no interruptions in service.

Palm Beach International Airport- Rehabilitate Taxiway Charlie.

Full time construction oversight to rehabilitate the full 10,000 foot length of Taxiway Charlie. Included new edge lights to support any geometry changes, the redesignation of the taxiway connectors names, installation of a new homerun circuit and associated junction can plazas, new signage and extensive vault modifications. Vault modifications included the relocation of several existing regulators, installation of new regulators and breaker changes in the distribution panels.

Palm Beach International Airport- Rehabilitate Taxiway Alpha.

Full time construction oversight to rehabilitate Taxiway Alpha at PBI. Task included building a new island to split the current A1 connector into two separate connectors. Also included the installation of new edge lights, signs and vault modifications.



Palm Beach International Airport- Construct Taxiway Whiskey.

Full time construction oversight for the construction of new Taxiway Whiskey at the airport. The new taxiway built to service Netjets included the installation of a new ductbank system servicing the taxiway, edge lights, signs and electrical vault modifications.

Fort Lauderdale / Hollywood International Airport- Emergency Switchgear Replacement.

Full time construction oversight for the installation of emergency switchgear for a 3MW backup power system. Involved extensive coordination and installation of temporary facilities as this emergency system services Terminal 2, 3 and 4 at the airport. Task also included installing new feeder cables to each terminal.

Fort Lauderdale / Hollywood International Airport- Terminal 4 Expansion. Responsible for construction phase services for this project including overall Airport Expansion Program coordination. Also included is the review of submittals, response to RFI's and general oversight of construction for conformance to contract documents.

Fort Lauderdale / Hollywood International Airport- Consolidated Rental Car Facility.

Responsibilities included site utility design and roadway design. This nine-story, \$160 million project included the design, coordination, and permitting of all utilities such as water, sanitary sewer, electric, and communication. Roadway design included layout, grading and drainage.

Fort Lauderdale / Hollywood International Airport- Expansion of Runway 9R-27L.

Design of a new 8,000 foot south runway and midfield taxiway system including airfield lighting, vault modifications, NAVAIDS, and electrical service points.

Palm Beach International Airport- Airfield Lighting Control and Monitoring System.

Project Manager for installation contractor. Extensive coordination with the ATCT to phase the new system into both the new and old control towers without interruption.



**Thomas Doran, Vice President
Hillers Electrical Engineering, Inc.****Education**

Bachelor of Business Administration, 1974
Geneseo State College, SUNY

Experience

44 years electrical design and construction management.

Hillers Electrical Engineering, Inc., 1994 to present

Design and construction services experience includes electrical distribution high, medium and low voltage systems, control, instrumentation, communication, lighting, fire alarm, security with camera systems, specifications, cost estimates, constructability review, value engineering, start-ups, testing, normal and standby generation systems and on-site construction services for water and wastewater treatment facilities, master lift stations, storm water pumping stations, water control structures, water treatment cells, fuel storage facilities, solid waste facilities and irrigation systems.

Airport experience includes runway, taxiway, apron and approach lighting systems, guidance and mandatory signage, PAPI, REIL and ODALS systems, instrumentation landing systems, FAA relocation of ASR, RT and RR facilities, airfield electrical vaults, aircraft maintenance hangars, T- hangars, fuel systems, security systems, parking garages, park and ride lighting and toll collection booths systems, terminal electrical and communications systems for air carrier and general aviation airports.

Transportation experience includes roadway lighting, electrical distribution design and construction management for the Florida Department of Transportation major roadways, interchanges, bridge exterior and interior electrical and lighting systems and toll plaza systems. Also designed lighting systems for county, municipal agencies and private developments.

Sports lighting, electrical distribution, site lighting, parking lot lighting, communications, public address and scoreboard systems design and construction management for professional and recreational football, baseball, soccer, tennis, hockey, basketball and roller hockey complexes owned by county, municipal agencies and private developers.

Electrical distribution, roadway lighting, site and landscape lighting and irrigation systems for major golf and tennis communities developed by private developers in South Florida.

Skills include: specification creation; value engineering; energy analysis; testing; cost estimates; start-up; onsite inspections; condition assessment.

References



One of the best parameters of a Consultant's success is the response received from the firm's clients. We encourage you to contact any of our references listed below to provide information about our performance. Hillers Electrical Engineering, Inc. is proud of our commitment of meeting the goals and objectives of our clients by completing projects on time and within budget.

Pompano Beach Municipal Golf Course Parking Lot Lighting, City of Pompano Beach, FL

Designed complete permit documents for the City that included photometric calculations, lighting control systems, electrical circuits, conductor and conduit systems, grounding systems and LED Lighting installation details and layouts. Completed 2017, Construction Cost: \$123,000.00

City Project Manager: Anthony Alhashemi, Anthony.Alhashemi@copbfl.com, (954) 786-4029

Pompano Beach Airpark Extension of Taxiway G, City of Pompano Beach, FL

Designed new taxiway and runway edge lighting systems, airfield electrical vault improvements, new airfield guidance signage systems, one wind sock and an existing airfield circuitry and signage plan. Performed construction services that included periodic on-site inspections, RFI responses, pay request reviews and approvals. Design completed 2015; Construction: On-going, Construction Cost: \$1.2M

City Engineering Manager: Tammy Good, PMP, Tammy.Good@copbfl.com, (954) 786-5512

City Airpark Manager: Steve Rocco, Steve.rocco@copbfl.com, (954) 786-4135

Pompano Beach Neighborhood Lighting Study, City of Pompano Beach, FL

Completed a lighting assessment for three large neighborhoods in Pompano Beach: Cresthaven, Highlands and Liberty Park, ran different lighting scenarios with utilizing photometric lighting calculation software, including cost estimating study completed 2017, Study Cost: \$41,400

CIP Manager: Horacio Danovich, Horacio.Danovich@copbfl.com, (954) 786-7834

WTP 9 2MW Generator Replacement, Palm Beach County Water Utilities Department

Design included removal of the existing generator, new Tier 4F rated generator, including aftertreatment clean emission module system, urea system, and air compressor system, new conduit/wiring system for new generator, new piping and transfer pump for the urea system, instruments associated with urea tank and generator aftertreatment system, new signals connection points back to the Plant PLC system. Project completed 2016 Total Project Cost: \$1.6M

PBC Project Manager: Mr. Steve McGrew, P.E., smcgrew@pbcwater.com, (561) 801-6246



**Pompano Beach Neighborhood Lighting Study,
City of Pompano Beach, FL**

Completed a lighting assessment for three large neighborhoods in Pompano Beach: Cresthaven, Highlands and Liberty Park, ran different lighting scenarios with utilizing photometric lighting calculation software, including cost estimating study completed 2017

Capital Improvements Program Manager: Horacio Danovich

**Pompano Beach Airpark Extension of Taxiway G,
City of Pompano Beach, FL**

Designed new taxiway and runway edge lighting systems, airfield electrical vault improvements, new airfield guidance signage systems, one wind sock and an existing airfield circuitry and signage plan. Construction services that include periodic on-site inspections, RFI – responses and pay request reviews and approvals. Design completed 2015; Construction: On going

City Engineering Manager: Tammy Good, PMP

City Airpark Manager: Steve Rocco

**Pompano Beach Municipal Golf Course Parking Lot Lighting
City of Pompano Beach, FL**

Designed complete permit documents for the City that included photometric calculations, lighting control systems, electrical circuits, conductor and conduit systems, grounding systems and LED Lighting installation details and layouts. Completed 2017

City Project Manager: Anthony Alhashemi

**Pompano Beach Airpark General Aviation Security Enhancements,
City of Pompano Beach, FL**

Designed new electrical infrastructure for CCTV and Access Control Systems, airfield electrical vault improvements, administration building modifications, electrical underground ductbank systems, lighting systems and photometric calculations. Construction services that include periodic on-site inspections, RFI responses and pay request reviews and approvals. Completed 2014

City Engineering Manager: Tammy Good, PMP

City Airpark Manager: Steve Rocco

**Pompano Beach Airpark Taxiway Kilo Relocation,
City of Pompano Beach, FL**

Designed new taxiway and runway edge lighting systems, airfield electrical vault improvements, new airfield guidance signage systems, and 1 wind sock. Construction services that include periodic on-site inspections, RFI – responses and pay request reviews and approvals. Completed 2012

City Engineering Manager: Tammy Good, PMP

City Airpark Manager: Steve Rocco



Pompano Airpark Runway 13-33 Extension/Displace Threshold/New FAA MALSR, City of Pompano Beach, FL

Designed 1 new FAA MALSR system, 5K Ft. runway edge lighting system, taxiway connector lightings, airfield electrical vault improvements, guidance signage, and 1 wind sock. Provided construction services that included periodic on-site inspections, RFI – responses and pay request reviews and approvals. Completed 2012

City Engineering Manager: Tammy Good, PMP

City Airpark Manager: Steve Rocco

Pompano Airpark Taxiway “N”and “F” Fillets, City of Pompano Beach, FL

Modified runway lighting, taxiway fillets/connector lighting, and guidance signage. Provided construction services that included periodic on-site inspections, RFI – responses and pay request reviews and approvals. Completed 2010

City Engineering Manager: Tammy Good, PMP

City Airpark Manager: Steve Rocco

Pompano Airpark New Standby Generator for Administration/Air Traffic Control Building, City of Pompano Beach, FL

Designed new 60 kW exterior mounted generator system with 500 gallon sub-base fuel tank. Designed new complete 225 Amp main normal and emergency electrical service, panelboards, transfer switch, grounding systems and FPL coordination. Completed 2011

City Engineering Manager: Tammy Good, PMP

City Airpark Manager: Steve Rocco

Jogging Path Lighting Areas 1 and 2(golf Course & Fire Station), City of Pompano Beach

Designed complete permit documents for the City that included electrical service points, lighting control systems, electrical circuits, cable and conduit systems, grounding systems and LED ballast installation details and layouts. Completed 2011

City Engineer: Alessandra Delfico, P.E.

Michael Moore Park, City of Pompano Beach

Designed a new main electrical service point and existing circuit relocations from existing building electrical room to the new electrical service point location. Included panelboards, lighting contactors, grounding systems, installation details and layouts for all electrical, lighting equipment and demolition of existing electrical and FPL coordination. Completed 2012

City Engineering Manager: Tammy Good, PMP



Office Location



Hilliers Electrical Engineering, Inc. (HEE) is located at 23257 State Road 7, Suite 100 in Boca Raton, Florida and has been providing quality electrical engineering services for over twenty four (24) years. All work for this project will be performed by our staff located in our Boca Raton, Florida location. We are a stable firm and have been in our same location since our incorporation in 1994. Our staff consists of eighteen (18) employees including six (6) professional engineers, two (2) senior designers, four (4) designers, three (5) field inspectors and one (1) administrative assistant. Our office contains modern computer and networking systems that house state-of-the-art engineering analysis and computer design software to produce efficient and cost effective solutions. Our aggregate engineering experience exceeds two hundred twenty-five (225) years in the areas of electrical, instrumentation, control, SCADA and telemetry systems. Our staff also includes over sixty (60) years of aggregate hands on construction experience.



Litigation



HILLERS ELECTRICAL ENGINEERING, INC.

February 27, 2018

To: The City of Pompano Beach, Florida

From: Paul Hillers, President of Hillers Electrical Engineering, Inc.

Re: RLI E-11-18

Hillers Electrical Engineering, Inc. has been in business since February of 1994. At this time, Hillers Electrical Engineering, Inc. the business and all of its current employees has not been involved in any type of litigation (civil or criminal) lawsuit cases ever. Also none of the current employees with Hillers Electrical Engineering, Inc. has been indicted for, or convicted of a felony. We have never been on the Florida Convicted Vendor List or Crimes Against Public Entities list.

Hillers Electrical Engineering, Inc. certifies that we are financially stable and have the necessary resources, human and financial, to provide the services at the level required by the City of Boca Raton in the State of Florida.

Sincerely,

Paul Hillers, President.



Minority Business Enterprises

BIDDERS ARE TO COMPLETE FORM AND UPLOAD COMPLETED FORM TO THE EBID SYSTEM

EXHIBIT B

MINORITY BUSINESS ENTERPRISE PARTICIPATION

RLI # _____

List all members of your team that are a certified Minority Business Enterprise (as defined by the State of Florida.) You must include copies of the MBE certificates for each firm listed with your electronic submittal.

Name of Firm	Certificate Included?

State of Florida

Minority Business Certification

Hillers Electrical Engineering Inc

Is certified under the provisions of
287 and 295.187, Florida Statutes, for a period from:

09/27/2017 to 09/27/2019



Erin Rock, Secretary
Florida Department of Management Services



FLORIDA DEPARTMENT OF MANAGEMENT SERVICES
office of supplier
DIVERSITY
We serve those who serve Florida



Forms(Included in proposal)

City of Pompano Beach, FL (Purchasing)

Supplier Response

Bid Information		Contact Information		Ship to Information
Bid Creator	Jeff English Purchasing Agent	Address	1190 NE 3rd Avenue Building C Pompano Beach, FL 33060	Address
Email	jeffrey.english@copbfl.com	Contact	Jeff English Purchasing	Contact
Phone	(954) 786-4098	Department		Department
Fax	(954) 786-4168	Building		Building
Bid Number	E-11-18 Addendum 1	Floor/Room		Floor/Room
Title	Continuing Contract for Electrical Engineering Services	Telephone	(954) 786-4098	Telephone
Bid Type	RLI	Fax	(954) 786-4168	Fax
Issue Date	1/24/2018 10:00 AM (ET)	Email	purchasing@copbfl.com	Email
Close Date	2/27/2018 02:00:00 PM (ET)			

Supplier Information

Company Hillers Electrical Engineering
 Address 23257 State Rd 7 Suite 100
 Boca Raton, FL 33428
 Contact Jacki Yasin
 Department
 Building
 Floor/Room
 Telephone (561) 451-9165
 Fax
 Email jacki.yasin@hillersee.com
 Submitted 2/26/2018 04:38:05 PM (ET)
 Total \$0.00

By submitting this Response I affirm I have received, read and agree to the all terms and conditions as set forth herein. I hereby recognize and agree that upon execution by an authorized officer of the City of Pompano Beach, this Response, together with all documents prepared by or on behalf of the City of Pompano Beach for this solicitation, and the resulting Contract shall become a binding agreement between the parties for the products and services to be provided in accordance with the terms and conditions set forth herein. I further affirm that all information and documentation contained within this response to be true and correct, and that I have the legal authority to submit this response on behalf of the named Supplier (Offeror).

Signature Jacki Yasin

Email jacki.yasin@hillersee.com

Supplier Notes

Bid Notes

Pursuant to Florida Statutes Chapter 287.055 "Consultants' Competitive Negotiation Act" the City of Pompano Beach invites professional Engineering firms to submit Letters of Interest, qualifications and experience for consideration to provide electrical engineering services to the City on a continuing as needed basis.

The City will receive sealed proposals until 2:00 p.m. (local), February 27, 2018. Proposals must be submitted electronically through the eBid System on or before the due date/time stated above. Any proposal received after the due date and time specified, will not be considered. Any uncertainty regarding the time a proposal is received will be resolved against the Proposer.

Proposer must be registered on the City's eBid System in order to view the solicitation documents and respond to this solicitation. The complete solicitation document can be downloaded for free from the eBid System as a pdf at: <https://pompanobeachfl.ionwave.net/CurrentSourcingEvents.aspx>. The City is not responsible for the accuracy or completeness of any documentation the Proposer receives from any source other than from the eBid System. Proposer is solely responsible for downloading all required documents. Responses will be electronically unsealed in a public forum and read aloud.

Bid Activities

Bid Messages

Bid Attributes

Please review the following and respond where necessary

#	Name	Note	Response
1	Small Business Enterprise	Is your company a Small Business Enterprise? (If yes, upload a copy of your certification to the Response Attachments tab.)	Yes
2	Local Business	Is your company a Local Business located within the City of Pompano Beach City Limits as required by the Local Business Program? (A copy of your current City of Pompano Beach Business Tax Receipt may be requested.)	No
3	Conflict of Interest	For purposes of determining any possible conflict of interest, all bidders must disclose if any City of Pompano Beach employee is also an owner, corporate officer, or employee of their business. Indicate either "Yes" (a City employee is also associated with your business), or "No". (Note: If answer is "Yes", you must file a statement with the Supervisor of Elections, pursuant to Florida Statutes 112.313.)Indicate yes or no below with the drop down menu.	No
4	Vendor Certification Regarding Scrutinized Companies Lists	Section 287.135, Florida Statutes, prohibits agencies from contracting with companies, for goods or services over \$1,000,000, that are on either the Scrutinized Companies with Activities in Sudan List or the Scrutinized Companies with Activities in the Iran Petroleum Energy Sector List. As the person authorized to electronically sign on behalf of Respondent, I hereby certify by selecting the box below that the company identified above is not listed on either the Scrutinized Companies with Activities in Sudan List or the Scrutinized Companies with Activities in the Iran Petroleum Energy Sector List. I understand that pursuant to section 287.135, Florida Statutes, the submission of a	Certified

false certification may subject company to civil penalties,
attorney's fees, and/or costs.

- | | | | |
|---|----------------------------|--|-------|
| 5 | Terms & Conditions | Check the box indicating you agree to the terms and conditions of this solicitation. | Agree |
| 6 | Acknowledgement of Addenda | Check this box to acknowledge that you have reviewed all addenda issued for this solicitation. | Yes |

Line Items		
Response Total:		\$0.00