

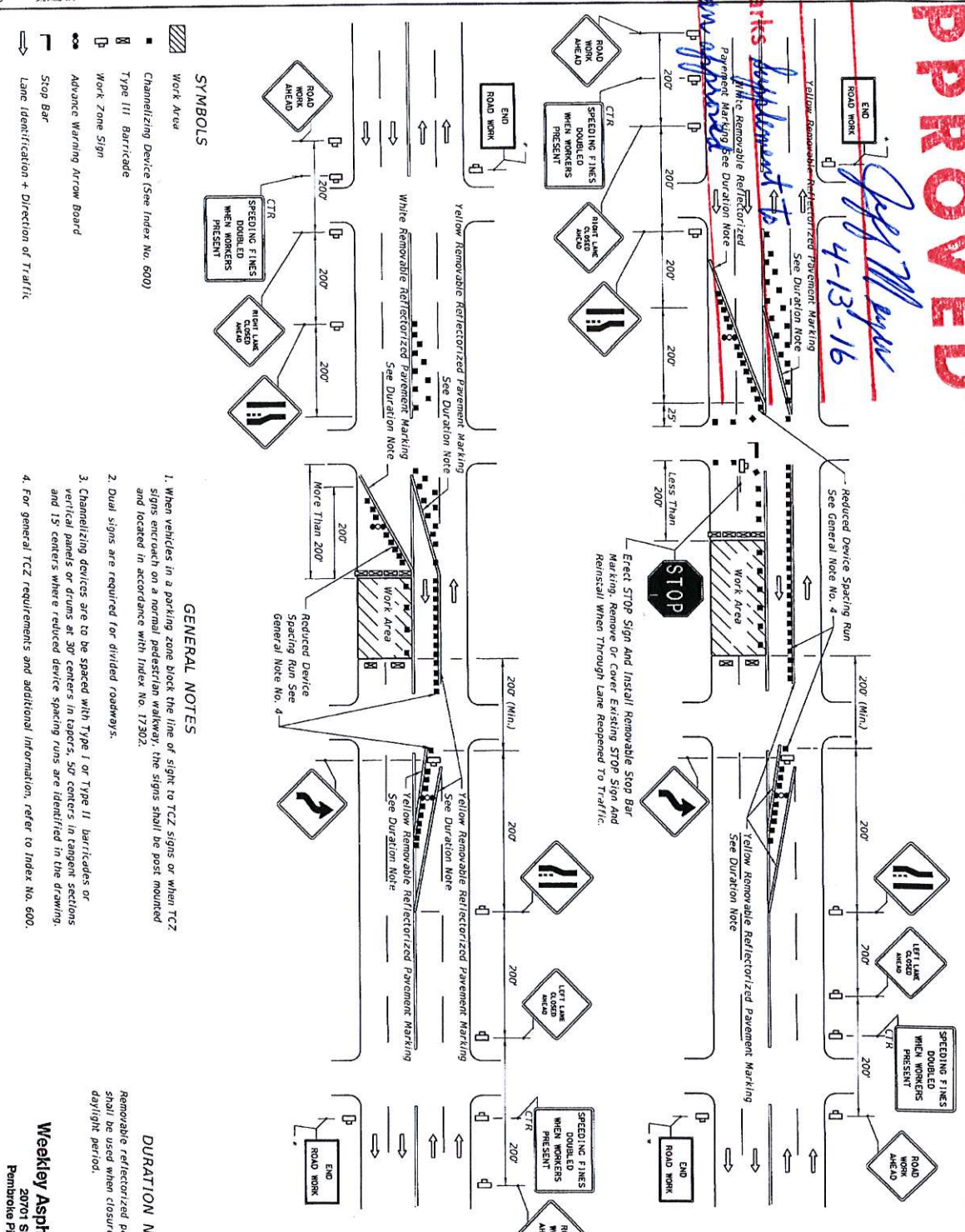
BROWARD COUNTY
Traffic Engineering Division
M.O.T. PLANS

APPROVED

By Jeff M. Miller
 4-13-16

Date

Remarks Remove to 5-16



CONDITIONS

WHERE ANY VEHICLE, EQUIPMENT, WORKERS OR THEIR ACTIVITIES ENCRATCH ON THE PAVEMENT REQUIRING THE CLOSURE OF TRAFFIC LANES IN ONE DIRECTION AND THE USE OF ONE OPPOSING TRAFFIC LANE TO MAINTAIN TWO-WAY TRAFFIC, FOR WORK AREA LESS THAN 200' FROM INTERSECTION, FOR A PERIOD OF MORE THAN 60 MINUTES.

CONDITIONS

WHERE ANY VEHICLE, EQUIPMENT, WORKERS OR THEIR ACTIVITIES ENCRATCH ON THE PAVEMENT REQUIRING THE CLOSURE OF TRAFFIC LANES IN ONE DIRECTION AND THE USE OF ONE OPPOSING TRAFFIC LANE TO MAINTAIN TWO-WAY TRAFFIC, FOR WORK AREA 200' OR MORE FROM INTERSECTION, FOR A PERIOD OF MORE THAN 60 MINUTES.

* When Other Construction Or Maintenance Operations Occur Within 1 Mile Sign To Be Omitted And Signing To Be Coordinated In Accordance With Index No. 600.

Weekley Asphalt Paving, Inc
 20701 Stirling Rd
 Pembroke Pines FL 33332

LAST REVISION 07/01/15	DESCRIPTION: FDOT DESIGN STANDARDS	FY 2016-17 MULTILANE WORK NEAR INTERSECTION-TEMPORARY DIVERSION CONNECTION - 55MPH OR LESS	INDEX NO. 622	SHEET NO. 1 of 1
---------------------------	---------------------------------------	---	------------------	---------------------

Exhibit "E"

**WEEKLEY ASPH
WILL FOLLOW FDOT
STANDARD INDEX 613
622**

**TAPER 540'
BUFFER 360'
SIGN SPACING 350'
DEVICE SPACING 25'
OR LESS**

TURNPIKE

MATCH WITH LINE A



BUS STOP

COCONUT CREEK PKWY

TURNPIKE



This Certifies that
Shawn A. Musgrave
Has Completed a Florida Department of Transportation
Approved Maintenance of Traffic (MOT) Advanced Course.
Date Expires 09/24/2019
Instructor Catherine Witt

Certificate # 11085
FDOT Provider # 37

ATSSA
Phone: 540-368-1701
15 Riverside Parkway Ste.100
Fredericksburg, FL
www.atssa.com
donna.clark@atssa.com

SAFER ROADS SAVE LIVES

MATCH WITH LINE A

WEEKLEY ASPH
WILL FOLLOW FDOT
STANDARD INDEX 613
622

TAPER 540'
BUFFER 360'
SIGN SPACING 350'
DEVICE SPACING 25'
OR LESS

NW 31 AVE

COCONUT CREEK PKWY



VARIABLE
MESSAGE
BOARD

TOLL BOOTH

TURNPIKE

DO
NOT
PASS



MATCH WITH LINE B



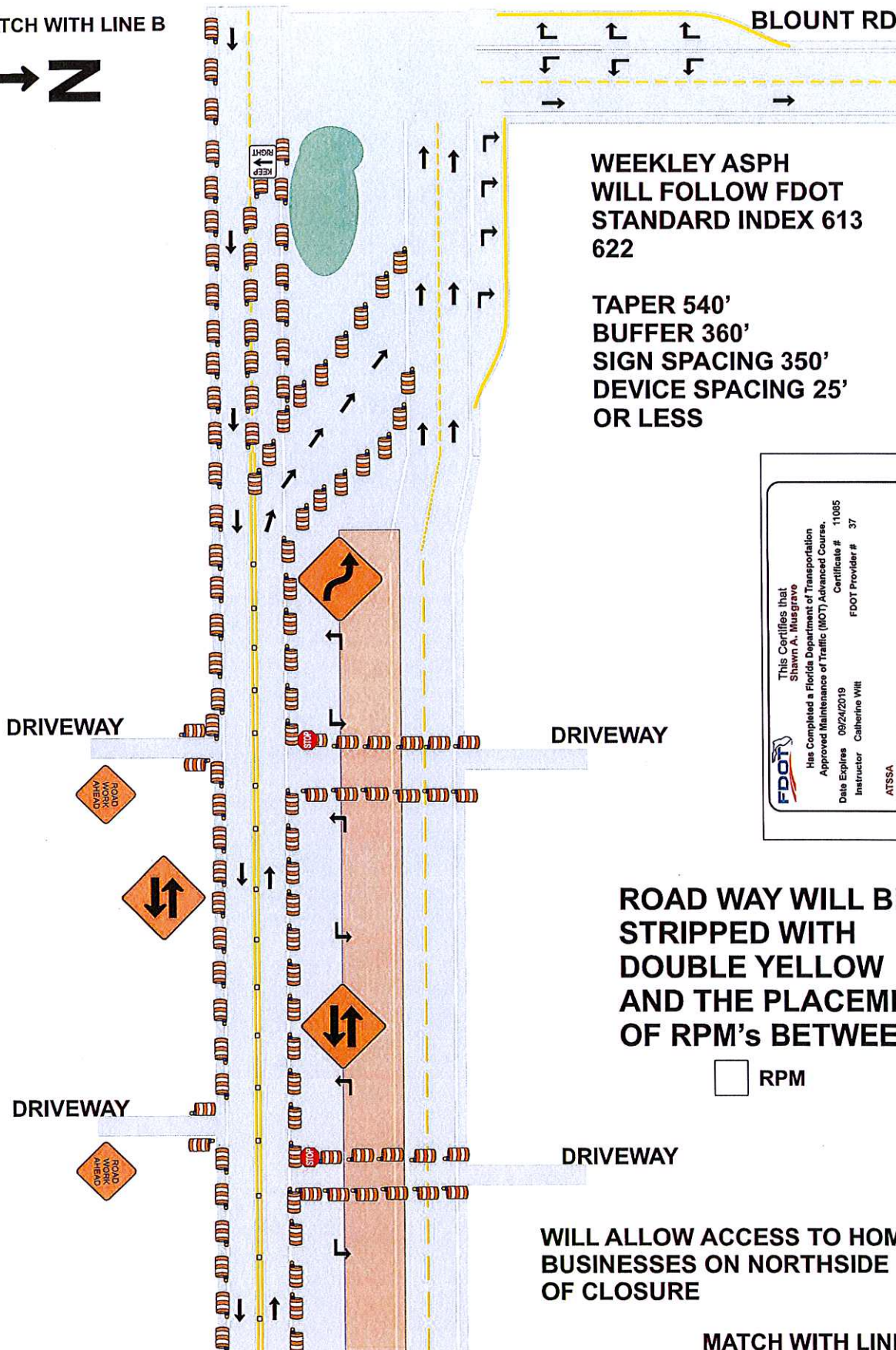
This Certifies that
Shawn A. Musgrave
Has Completed a Florida Department of Transportation
Approved Maintenance of Traffic (MOT) Advanced Course.
Date Expires 09/24/2019 Certificate # 11085
Instructor Catharina Will FDOT Provider # 37



ATSSA
Phone: 540-368-1701
15 Riverside Parkway Ste. 100
Frederickburg, FL
www.atssa.com
donna.clark@atssa.com

SAFER ROADS SAVE LIVES

MATCH WITH LINE B



BLOUNT RD

WEEKLEY ASPH
WILL FOLLOW FDOT
STANDARD INDEX 613
622

TAPER 540'
BUFFER 360'
SIGN SPACING 350'
DEVICE SPACING 25'
OR LESS

This Certifies that
Shawn A. Musgrave
Has Completed a Florida Department of Transportation
Approved Maintenance of Traffic (MOT) Advanced Course.
Date Expires 09/24/2019
Instructor Catherine Witt

Certificate # 11085
FDOT Provider # 37

ATSSA
Phone: 540-368-1701
15 Riverside Parkway Ste.100
Fredericksburg, FL
www.atssa.com
donna.clar@atssa.com

ATSSA
SAFER ROADS SAVE LIVES

ROAD WAY WILL BE
STRIPPED WITH
DOUBLE YELLOW
AND THE PLACEMENT
OF RPM's BETWEEN



WILL ALLOW ACCESS TO HOMES OR
BUSINESSES ON NORTHSIDE
OF CLOSURE

MATCH WITH LINE C

MATCH WITH LINE C

WEEKLEY ASPH
WILL FOLLOW FDOT
STANDARD INDEX 613
622

TAPER 540'
BUFFER 360'
SIGN SPACING 350'
DEVICE SPACING 25'
OR LESS

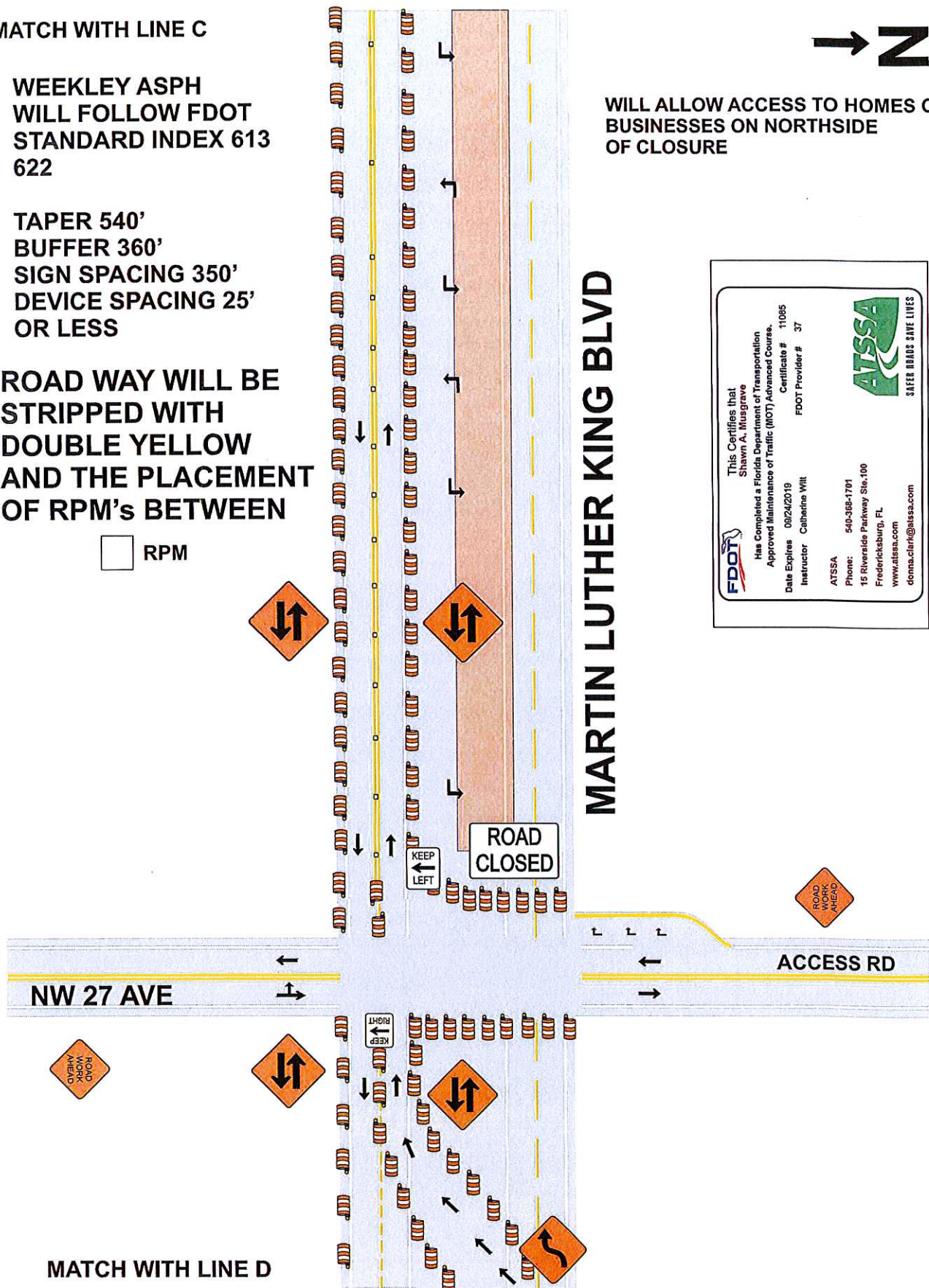
ROAD WAY WILL BE
STRIPPED WITH
DOUBLE YELLOW
AND THE PLACEMENT
OF RPM'S BETWEEN



RPM

→ N
WILL ALLOW ACCESS TO HOMES OR
BUSINESSES ON NORTHSIDE
OF CLOSURE

MARTIN LUTHER KING BLVD



This Certifies that
Shawn A. Musgrave
Has Completed a Florida Department of Transportation
Approved Maintenance of Traffic (MOT) Advanced Course.
Certificate # 11085
Date Expires 09/24/2019
Instructor Catherine Will
FDOT Provider # 37

ATSSA
Phone: 540-388-1701
15 Riverside Parkway Ste. 100
Fredericksburg, FL
www.atssa.com
donna.clark@atssa.com

ATSSA
SAFER ROADS SAVE LIVES

MATCH WITH LINE D

MATCH WITH LINE D

This Certifies that
Shawn A. Musgrave
Has Completed a Florida Department of Transportation
Approved Maintenance of Traffic (MOT) Advanced Course.
Certificate # 11085
Date Expires 09/24/2019
Instructor Catherine Witt
FDOT Provider # 37

ATSSA
SAFER ROADS SAVE LIVES

ATSSA 540-308-1701
Phone: 15 Riverside Parkway Ste. 100
Fredericksburg, FL
www.atssa.com
donna.clark@atssa.com

**WEEKLEY ASPH
WILL FOLLOW FDOT
STANDARD INDEX 613
622**

**TAPER 540'
BUFFER 360'
SIGN SPACING 350'
DEVICE SPACING 25'
OR LESS**

MARTIN LUTHER KING BLVD

