

SECTION NO(S): 861700, 860390
& 861300
S.R. NO.(S): 811 & 814
COUNTY: Broward

**DISTRICT FOUR (4) AMENDMENT NUMBER THIRTEEN (13) TO STATE
OF FLORIDA DEPARTMENT OF TRANSPORTATION LANDSCAPE INCLUSIVE
LANDSCAPE MAINTENANCE MEMORANDUM OF AGREEMENT**

This is Amendment Number Thirteen (13) to the Agreement dated December 5, 2007, made and entered into this _____ day of _____ 20__ by and between the State of Florida Department of Transportation hereinafter called the "**DEPARTMENT**" and the CITY OF POMPANO BEACH, a municipal corporation of the State of Florida, hereinafter called the "**AGENCY**".

WHEREAS, the parties entered into the Inclusive Landscape Maintenance Memorandum of Agreement dated December 5, 2007 for the purpose of maintaining the landscape improvements by the AGENCY on various State Road(s) including State Road 811 (Dixie Highway) and State Road 814 (Atlantic Boulevard); and

WHEREAS, pursuant to the Roadway Transfer Agreement executed on April 19, 2016 for State Road 811 (Dixie Highway) and State Road 814 (Atlantic Boulevard) the following limits need to be amended; and

NOW THEREFORE, for and in consideration of mutual benefits that flow each to the other, the parties covenant and agree as follows:

1. The DEPARTMENT shall modify the limits of the Inclusive Landscape Maintenance Memorandum of Agreement dated December 5, 2007, by amending **Exhibit "A"** City of Pompano Beach to reduce the limits on **State Road 811 (Dixie Highway)** to include:

State Road 811 (Dixie Highway) from (M.P. 5.129) to (M.P. 5.144)
and

State Road 811 (Dixie Highway) from (M.P. 10.038) to S.W. 15th Street (M.P. 11.619)

2. The DEPARTMENT shall modify the limits of the Inclusive Landscape Maintenance Memorandum of Agreement dated December 5, 2007, by amending **Exhibit "A"** City of Pompano Beach to reduce the limits on **State Road 814 (Atlantic Boulevard)** to include:

State Road 814 (Atlantic Boulevard) from (M.P. 1.175) to (M.P. 5.421) and (M.P. 7.641) to (M.P. 7.712) S.C. Fox Memorial Bridge (Bridge Abutment to Bridge Abutment).

3. The DEPARTMENT shall modify the limits of the Inclusive Landscape Maintenance Memorandum of Agreement dated December 5, 2007, by amending **Exhibit "A"** City of Pompano Beach limits on **State Road 9 (I-95)** by eliminating the following limits:

State Road 9 (I-95) from M.P. 16.487 (south of McNab Road) to M.P. 21.582 (Sample Road). The State Road 9 (I-95) Interchange Ramps Landscape will continue to be the City's responsibility to maintain.

Except as modified by this Amendment, all terms and conditions of the AGREEMENT shall remain in full force and effect.

Exhibit

Exhibit "A": - LANDSCAPE IMPROVEMENTS LIMITS AND MAINTENANCE
BOUNDARIES

In Witness whereof, the parties hereto have executed with this Amendment effective the ____ day _____ year written and approved.

CITY OF POMPANO BEACH
a municipal corporation.

State of Florida
Department of Transportation

BY:

BY:

City Manager or Designee

Transportation Development Director

Attest: _____
Deputy City Clerk Date

Attest: _____ (Seal)
Executive Secretary

Legal Review

Legal Review

Attorney Date

Office of General Counsel Date

SECTION NO(S): 861700, 860390
& 861300
S.R. NO.(S): 811 & 814
COUNTY: Broward

EXHIBIT A

LANDSCAPE IMPROVEMENTS LIMITS AND MAINTENANCE BOUNDARIES

- I. [OLD LIMITS] OF THE INCLUSIVE LANDSCAPE MEMORANDUM OF AGREEMENT PRIOR TO THE ROADWAY TRANSFER AGREEMENT FOR STATE ROAD 811 (DIXIE HIGHWAY) AND STATE ROAD 814 (ATLANTIC BOULEVARD) INCLUDE:

Section 86170000

State Road 811 (Dixie Highway) from M.P. 5.129 (C.C. Canal) to M.P. 11.619 (S.W. 15th Street)

Section 86039000

State Road 814 (Atlantic Boulevard) from M.P. 1.175 (Turnpike) to M.P. 2.482 (State Road 849/N. W 31st Avenue)

Section 86130000

State Road 814 (Atlantic Boulevard) M.P. 3.229 (State Road 849) to M.P. 7.870 State Road A1A)

State Road 9 (I-95) from M.P. 16.487 (south of McNab Road) to M.P. 21.582 (Sample Road)

- II. [NEW LIMITS] OF THE INCLUSIVE LANDSCAPE MEMORANDUM OF AGREEMENT AFTER THE ROADWAY TRANSFER AGREEMENT FOR STATE ROAD 811 (DIXIE HIGHWAY) AND STATE ROAD 814 (ATLANTIC BOULEVARD) TO INCLUDE:

State Road 811 (Dixie Highway) from (M.P. 5.129) to (M.P. 5.144)
and

State Road 811 (Dixie Highway) from (M.P. 10.038) to S.W. 15th Street (M.P. 11.619)

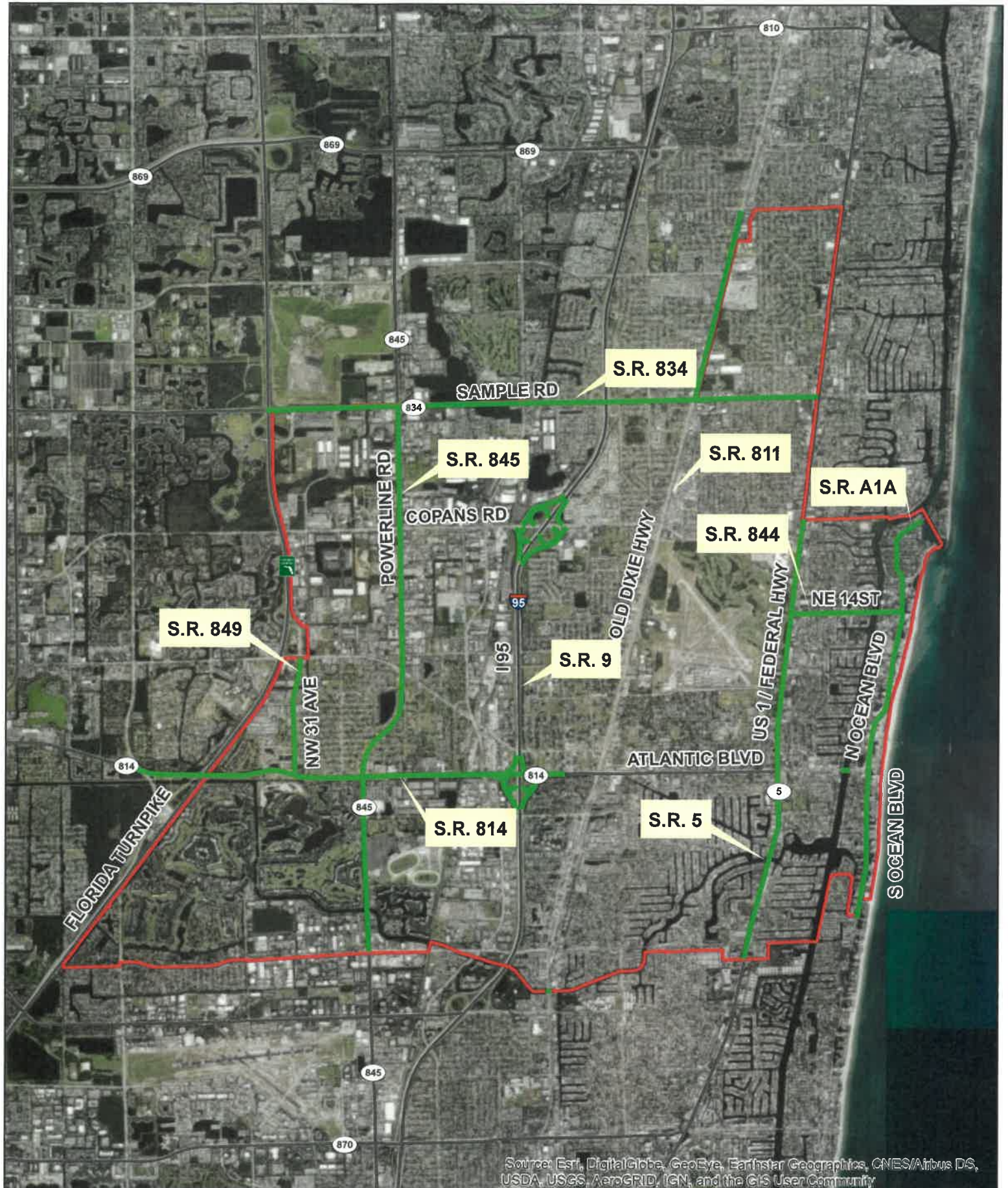
State Road 814 (Atlantic Boulevard) from (M.P. 1.175) to (M.P. 5.421) and (M.P. 7.641) to (M.P. 7.712) (Bridge Abutment to Bridge Abutment).

III. LANDSCAPE IMPROVEMENTS MAINTENANCE BOUNDARY LIMITS MAP

Please See Attached

- All other limits within the other State Roads shall remain the same.

(All other maintenance boundaries of original agreement apply)



Source: Esri, DigitalGlobe, GeoEye, Earthstar Geographics, CNES/Airbus DS, USDA, USGS, AeroGRID, IGN, and the GIS User Community

Legend

- Inclusive MOA
- City Limits
- Major Roads

City of Pompano Beach

Inclusive Landscape Maintenance Memorandum of Agreement
Maintenance Boundary Graphic

