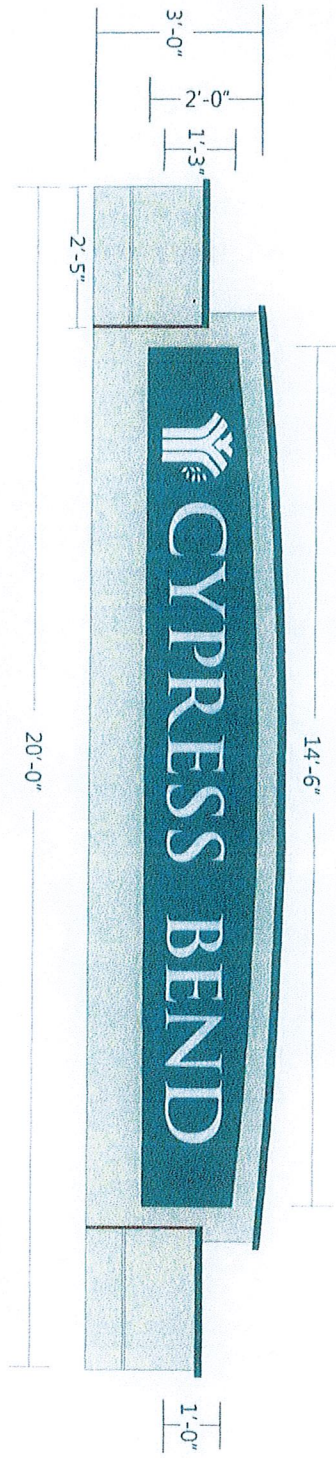
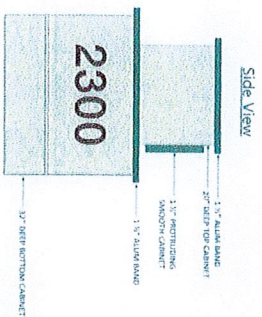


SCALE
1/2" = 1'-0"



PROPOSED:

Fabricate and Install one (1) 3'-0" x 20'-0" x 20" deep double face LED internally illuminated monument sign, decorated with 1 1/2" protruding routed out aluminum face PMS 350 C smooth finished and 1 1/2" decoration aluminum bands all around sign.
Copy to 1/2" clear acrylic plastic copy protruding 3/8" utilizing 3M translucent vinyl overlay.
Cabinet to be PMS 5527 C stucco finished.
Furnish and Install one (1) set of 6" tall x 1/4" thick aluminum plate numerals.



Dynamic Engineering Solutions, Inc.
John H. Orsler, PE 52733, EB 25529
351 S. Cypress Road, Suite 203 • Pompano Beach, FL 33060

DESIGNED IN COMPLIANCE WITH FLORIDA BUILDING CODE, 6th EDITION SECTION 1620 AND APPENDIX H AND ASCE 7-10
VULN. WIND SPEED 170 MPH • EXPOSURE CLASSIFICATION - C • RISK CATEGORY - II
DESIGN PRESSURE 38.5 PSF

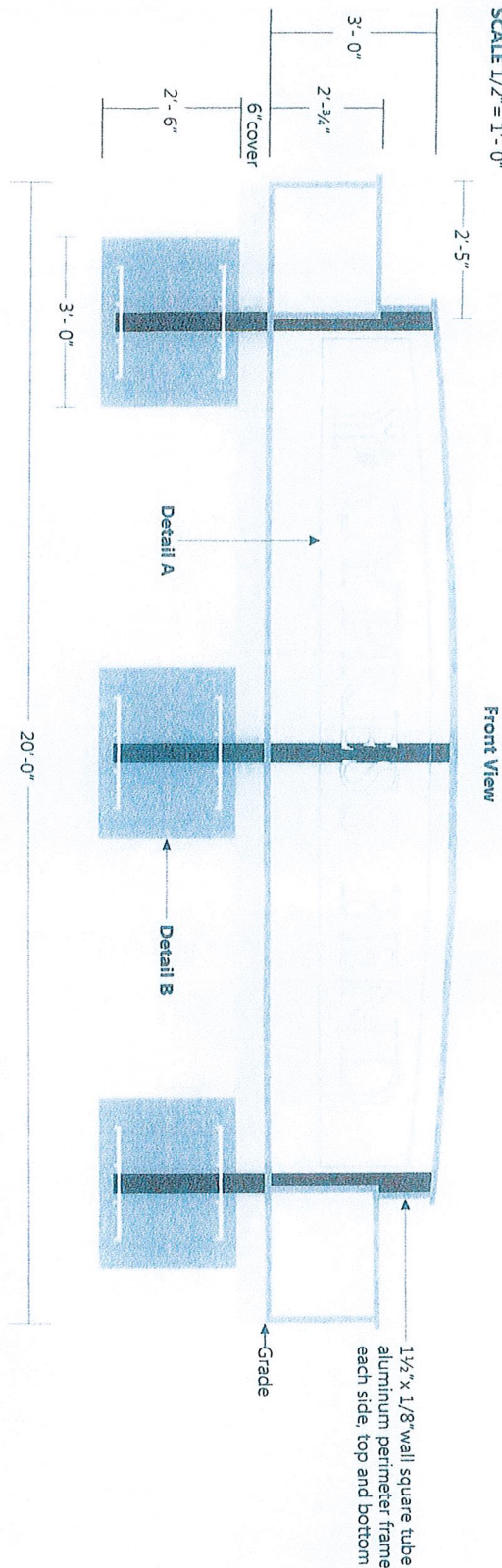


NAME	CYPRESS BEND PROTECTIVE CORP.
JOB NAME	CYPRESS BEND
ADDRESS	2301 S CYPRESS BEND POMPANO BEACH, FL 33069
DESIGNER	DWG NO. SALES REP. DATE
M.B.	18270 LESIA 05/08/2018

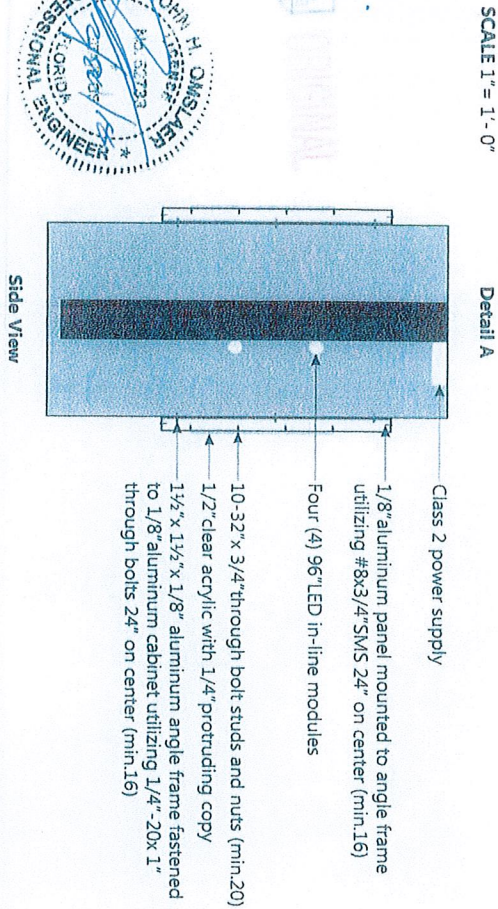
APPROVAL	REVISIONS

This Design is the property of McNeill Signs, Inc. and may not be reproduced without permission.
400 Ninth Street, Bunnell, FL 32110 Ph. 386-586-7100 Fax. 386-586-0073
Website - www.mcneillsigns.com Sales Dept. E-mail - sales@mcneillsigns.com

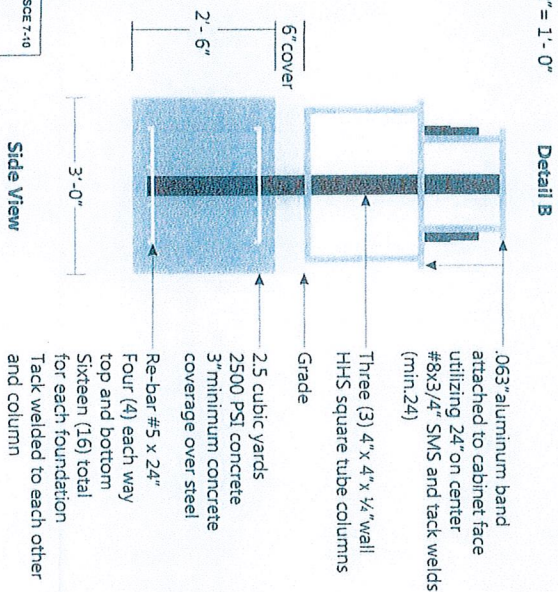
SCALE 1/2" = 1' - 0"



SCALE 1" = 1' - 0"



SCALE 1/2" = 1' - 0"



Side View

Dynamic Engineering Solutions, Inc.
John H. Ormsley, PE 5773, EB 28829
351 S. Cypress Road, Suite 303 • Pompano Beach, FL 33060

DESIGNED IN COMPLIANCE 2017 FLORIDA BUILDING CODE, 8th EDITION SECTION 1620 AND APPENDIX H AND ASCE 7-10
VULT WIND SPEED 170 MPH • EXPOSURE CLASSIFICATION = C • RISK CATEGORY = II
DESIGN PRESSURE 38.5 psf

Side View

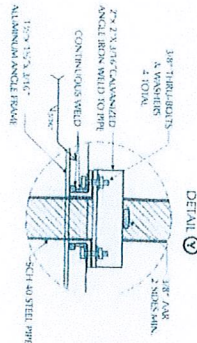
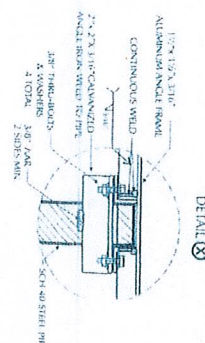
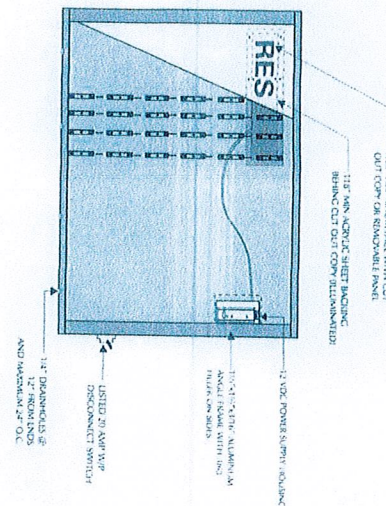
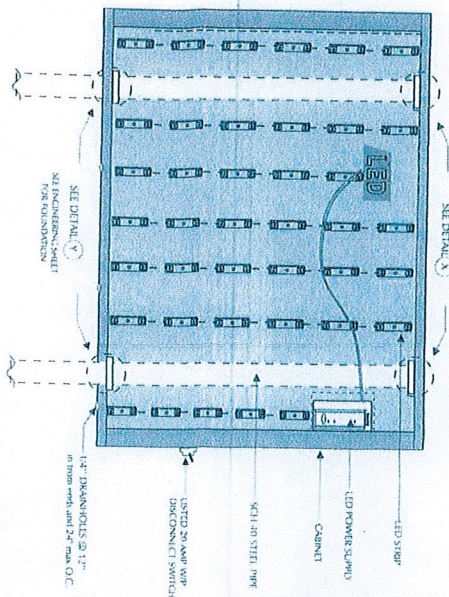


NAME	CYPRESS BEND PROTECTIVE CORP.
JOB NAME	CYPRESS BEND
ADDRESS	2301 S CYPRESS BEND POMPANO BEACH, FL 33069
DESIGNER	DWG NO. SALES REP. DATE
M.B.	18142 LISA 03/20/2018

APPROVAL	REVISIONS

This Design is the property of McNeill Signs, Inc. and may not be reproduced without permission.
400 Ninth Street, Bunnell, FL 32110 Ph. 386-586-7100 Fax. 386-586-0073
Website - www.mcneillsigns.com Sales Dept. E-mail - sales@mcneillsigns.com

SIGN TO BE GROUNDED IN ACCORDANCE WITH 2014 NEC ARTICLE 250 AND 600.7.



MANUFACTURED AND ALL COMPONENTS TO COMPLY WITH U.L. AND NEC REQUIREMENTS
SIGN GROUNDED AS PER N.E.C. 250. U.L. 48

less than twice the ampere rating of transformers as per NEC 404.14 and 600.6 (B).

branch circuits not to exceed 20 amperes as per NEC 600.5 (A) & (B).

Equipment grounding to be grounded by connection as per NEC 600.7 (a) (1) and 750.118

Equipment bonding connections to be in accordance with 250.8.

sign to be marked as per NEC 600.4 (A). Power supplies marked as per NEC 600.23 (A)-(F). Section signs to be marked and installation instructions provided as per NEC 600.4 (C) and (D).

Sufficient number of 1/4" drain holes as per NEC 600.9 (D).

Ballast, transformers, electronic power supplies, and class 2 power sources as per NEC 600.21 within the sign as per NEC 600.22

Grounding as per NEC 600.7 and article 250.

Class 2 power sources as per NEC 600.24 (A)-(D)

Field installed secondary wiring to be installed as per NEC 600.12 (A), (B) and (C).

equipment as per NEC 600.21 (D), (E) and (F).

Power supplies as per NEC 600.21, 600.23 and 600.32

All since exercise to be countoff and have it " "

AB.1.4 and energy conservation code C 405.6.2 exception 2.

design to be manufacture and install in accordance with FBC 2017 chapter 16 including sections 3107 and 2612

THE MANUFACTURER REQUIRES THAT ALL COMPONENTS
BE LISTED BY A RECOGNIZED TESTING SERVICE

VOLTAGE 120 (B)

ALL ELECTRICAL COMPONENTS ARE (A) LISTED
SHOWN GROUNDING ACCORDING TO NEC 250

QTY.	SOURCE	TYPE	AMPS	TOTAL
POWER SUPPLY				

FOR ALL ELECTRICAL LOCATIONS, ALL INTERIORS, HILLTOPS AND SLOES ARE WEATHERPROOF AND INCLUDE DRAIN PIPES.
NOTE: ALL ELECTRICAL COMPONENTS
CONFORM TO UL 48 STANDARDS FOR SAFETY.

- Installation Instructions:**

1. Measure, sign, as required on engineering design drawing.
2. Identify and mark the location of the cable tray, ladders, ladders and penetrations.
3. Seal all wall penetrations.
4. Connect secondary and primary supply conductors to provided splice connection conductors in appropriate space compartment enclosure as intended and required by applicable codes.
5. Make all electrical connections and test light.

connection.

connecting conductors to supply conductors.

6. Clean product of any fingerprints and installation debris.

Dynamic Engineering Solutions, Inc.
John H. Omstetter, PE 52733, EB 2668
351 S. Cypress Road, Suite 303
Pompano Beach, FL 33069

DESIGNED IN COMPLIANCE 2017 FLORIDA BUILDING CODE
6th EDITION SECTION 1620 AND APPENDIX H AND ASCE 7-16
VUL7 WIND SPEED 138 MPH
EXPOSURE CLASSIFICATION C
RISK CATEGORY = II 25.7
DESIGN PRESSURE _____
PSF

McNeill
McNeill Signs, Inc.
Serving Florida since 1956

NAME
JOB NAME
ADDRESS

Cypress Bend
2301 S. Cypress Bend Rd
LED ILLUMINATED CABINET SIGN WITH 2 POLES

DATE	FBC 2017 NEC 2014
------	----------------------

E-34

This Design is the property of Menell Signs, Inc. and may not be reproduced without authorization
555 S. Dixie Hwy, East, Pompano Beach, FL 33060 Ph. 954-946-3474 Fax. 954-946-8051