



Site Address	101 NW 2 AVENUE, POMPANO BEACH FL 33060	ID #	4842 35 20 0051
Property Owner	CITY OF POMPANO BEACH	Millage	1512
Mailing Address	100 W ATLANTIC BLVD POMPANO BEACH FL 33060	Use	94
Abbr Legal Description	WOODRUFFS ADD 2-55 PB LOT 10 E 35.50, 14 E 35.50 & TOGETHER WITH W 1/2 OF VAC'D NW 2ND AVE LYING E & ADJ TO SAID LOTS		

The just values displayed below were set in compliance with [Sec. 193.011](#), Fla. Stat., and include a reduction for costs of sale and other adjustments required by [Sec. 193.011\(8\)](#).

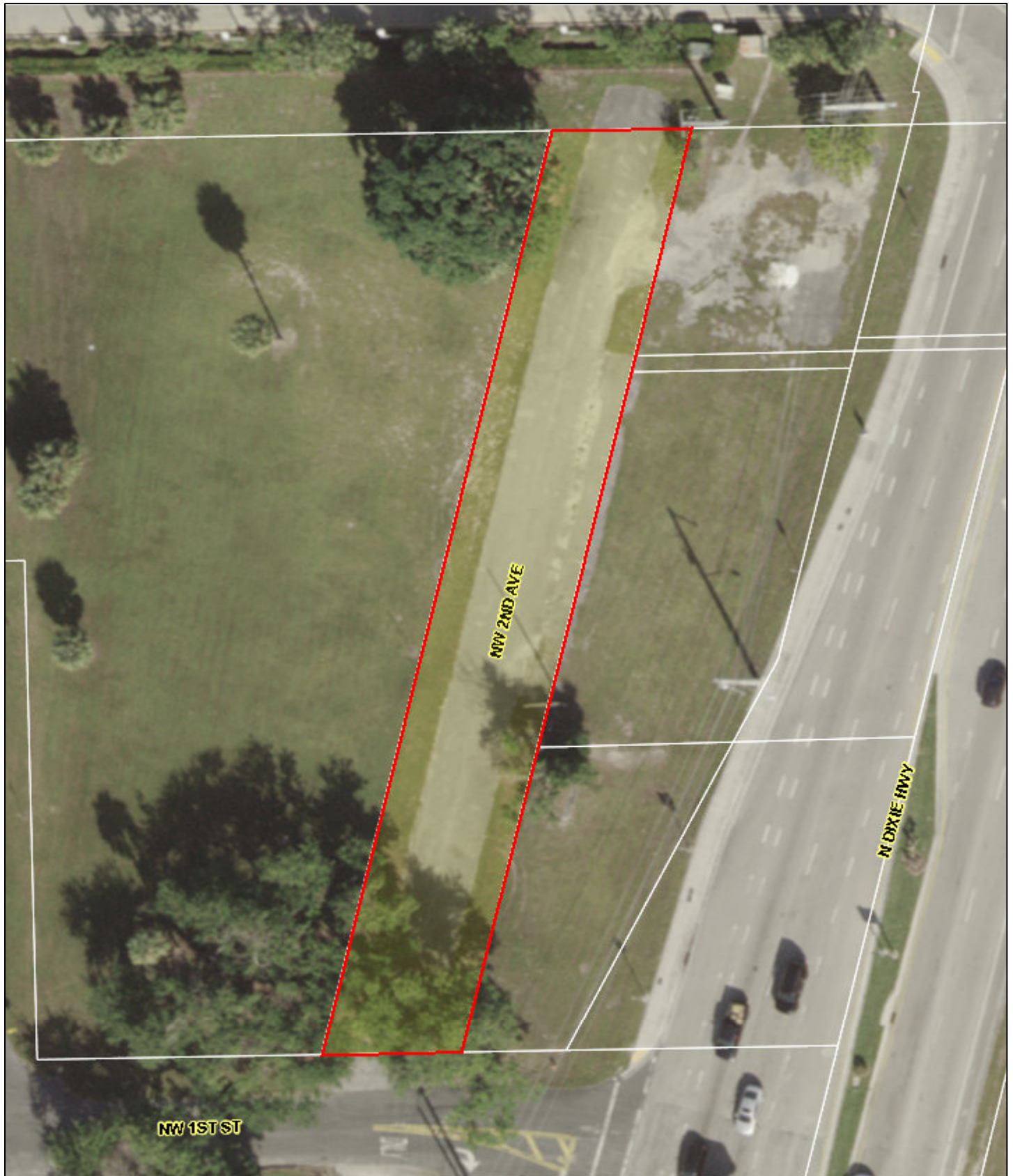
Property Assessment Values					
Year	Land	Building / Improvement	Just / Market Value	Assessed / SOH Value	Tax
2019	\$6,370		\$6,370	\$6,370	
2018	\$6,370		\$6,370	\$6,370	
2017	\$6,370		\$6,370	\$6,370	

2019 Exemptions and Taxable Values by Taxing Authority				
	County	School Board	Municipal	Independent
Just Value	\$6,370	\$6,370	\$6,370	\$6,370
Portability	0	0	0	0
Assessed/SOH	\$6,370	\$6,370	\$6,370	\$6,370
Homestead	0	0	0	0
Add. Homestead	0	0	0	0
Wid/Vet/Dis	0	0	0	0
Senior	0	0	0	0
Exempt Type 14	\$6,370	\$6,370	\$6,370	\$6,370
Taxable	0	0	0	0

Sales History				Land Calculations		
Date	Type	Price	Book/Page or CIN	Price	Factor	Type
6/2/2010	OR*-T		47116 / 1242	\$0.51	12,491	SF
4/4/1974	ORT		5702 / 433			
				Adj. Bldg. S.F.		

* Denotes Multi-Parcel Sale (See Deed)

Special Assessments								
Fire	Garb	Light	Drain	Impr	Safe	Storm	Clean	Misc
15								
X								
1								



January 2, 2019

