



<b>Site Address</b>	<b>708 NW 6 STREET, POMPANO BEACH FL 33060</b>	<b>ID #</b>	4842 35 39 0010
<b>Property Owner</b>	POMPANO BEACH COMMUNITY REDEVELOPMENT AGENCY	<b>Millage</b>	1512
<b>Mailing Address</b>	100 W ATLANTIC BLVD POMPANO BEACH FL 33060	<b>Use</b>	80
<b>Abbr Legal Description</b>	TUXEDO PARK 18-19 B LOT 1		

The just values displayed below were set in compliance with [Sec. 193.011](#), Fla. Stat., and include a reduction for costs of sale and other adjustments required by [Sec. 193.011\(8\)](#).

Property Assessment Values					
Year	Land	Building / Improvement	Just / Market Value	Assessed / SOH Value	Tax
2020	\$20,980		\$20,980	\$12,130	
2019	\$20,980		\$20,980	\$11,030	
2018	\$20,980		\$20,980	\$10,030	

2020 Exemptions and Taxable Values by Taxing Authority				
	County	School Board	Municipal	Independent
<b>Just Value</b>	\$20,980	\$20,980	\$20,980	\$20,980
<b>Portability</b>	0	0	0	0
<b>Assessed/SOH</b>	\$12,130	\$20,980	\$12,130	\$12,130
<b>Homestead</b>	0	0	0	0
<b>Add. Homestead</b>	0	0	0	0
<b>Wid/Vet/Dis</b>	0	0	0	0
<b>Senior</b>	0	0	0	0
<b>Exempt Type 15</b>	\$12,130	\$20,980	\$12,130	\$12,130
<b>Taxable</b>	0	0	0	0

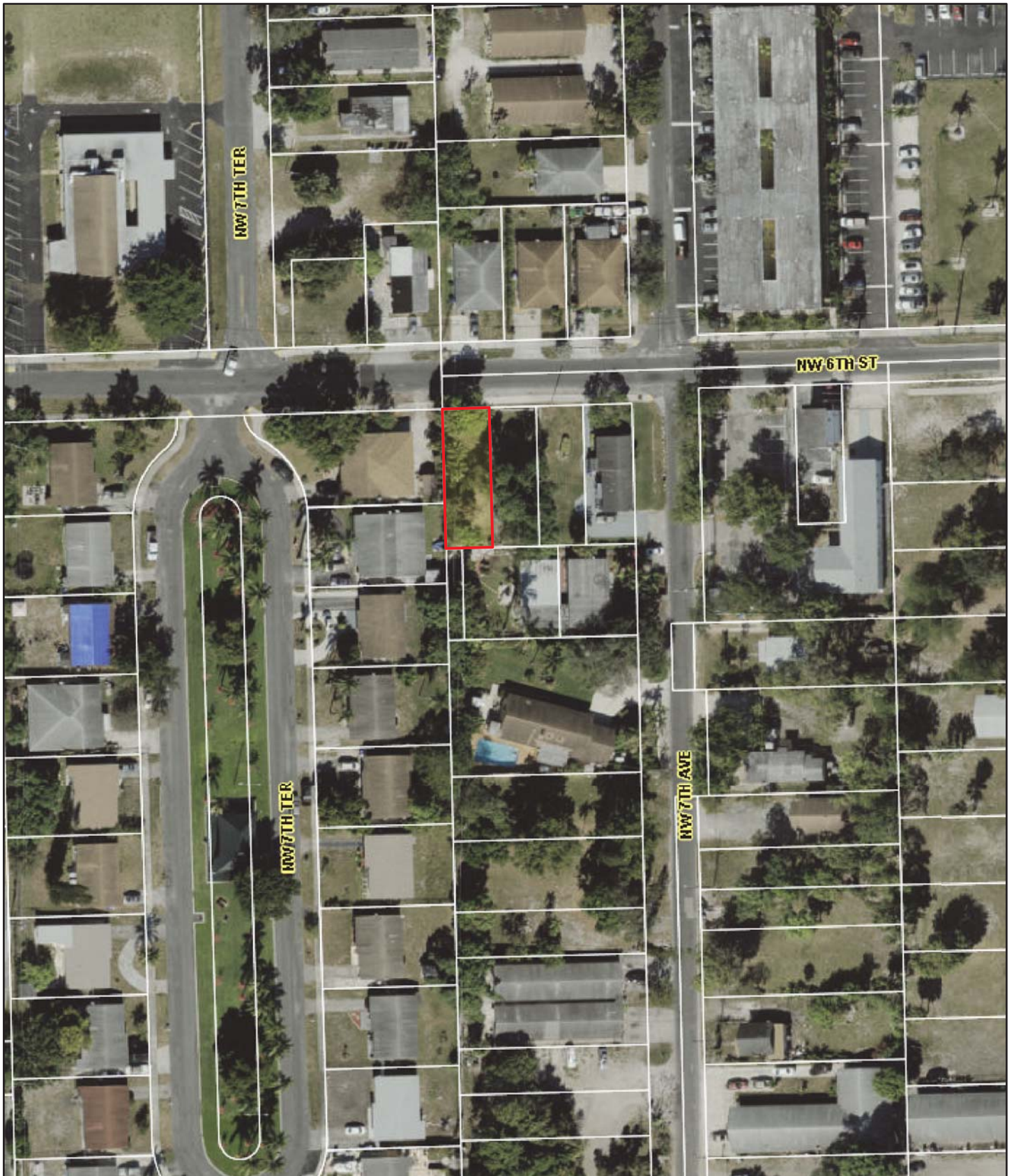
Sales History				Land Calculations		
Date	Type	Price	Book/Page or CIN	Price	Factor	Type
9/14/2004	QC*	\$100	38354 / 253	\$5.75	3,649	SF
4/29/2003	QC*		35055 / 1026			
7/13/2001	TXD		33050 / 1798			
10/1/1988	QCD		15912 / 307			
				Adj. Bldg. S.F.		

\* Denotes Multi-Parcel Sale (See Deed)

Special Assessments								
Fire	Garb	Light	Drain	Impr	Safe	Storm	Clean	Misc
15			3A					
L			3A					
1								

Property Id: 484235390010

\*\*Please see map disclaimer



January 27, 2020

