



The just values displayed below were set in compliance with [Sec. 193.011](#), Fla. Stat., and include a reduction for costs of sale and other adjustments required by [Sec. 193.011\(8\)](#).

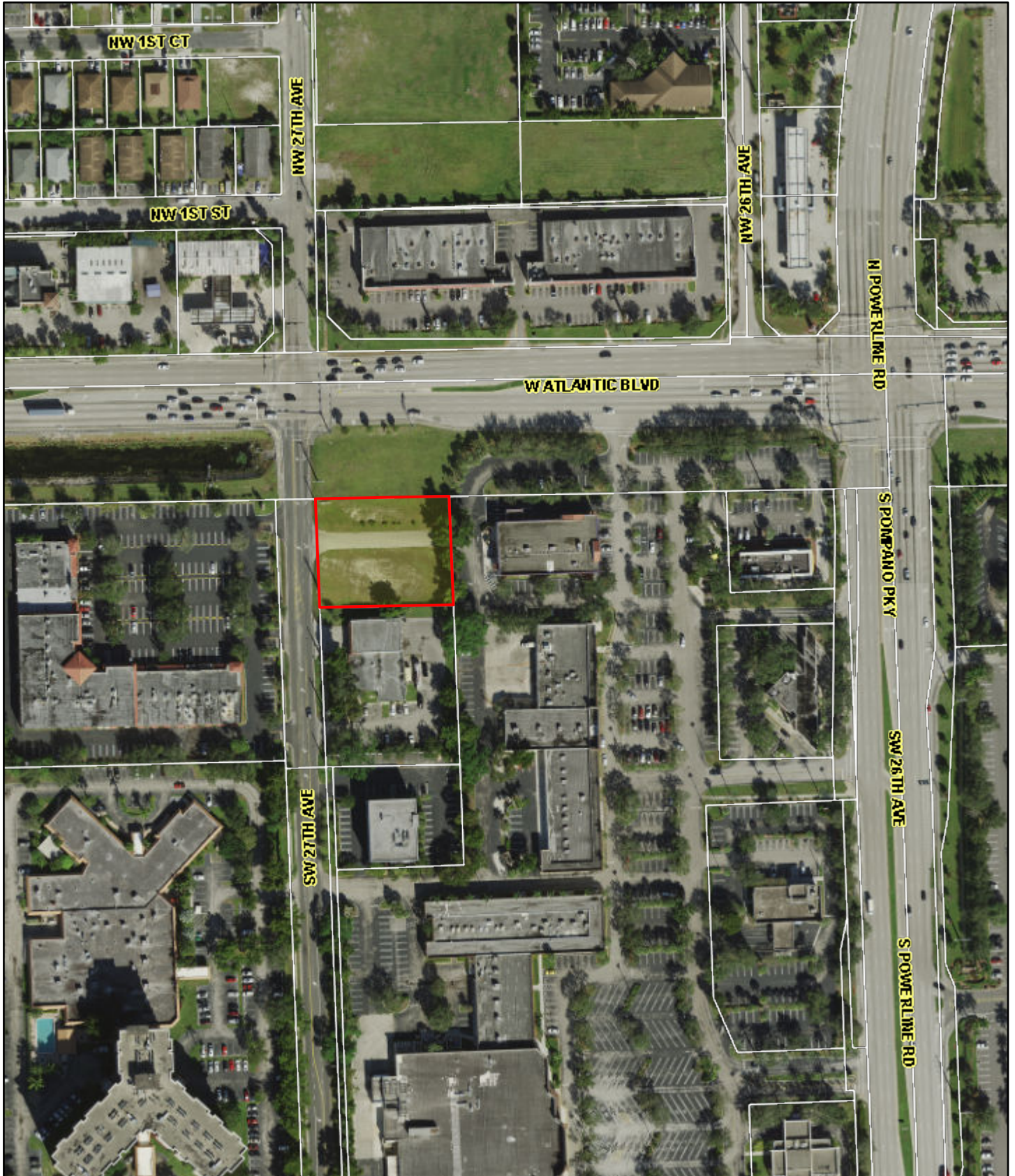
## 2020 Exemptions and Taxable Values by Taxing Authority

## Sales History

## Land Calculations

## Special Assessments

2/27/2020



June 4, 2020

