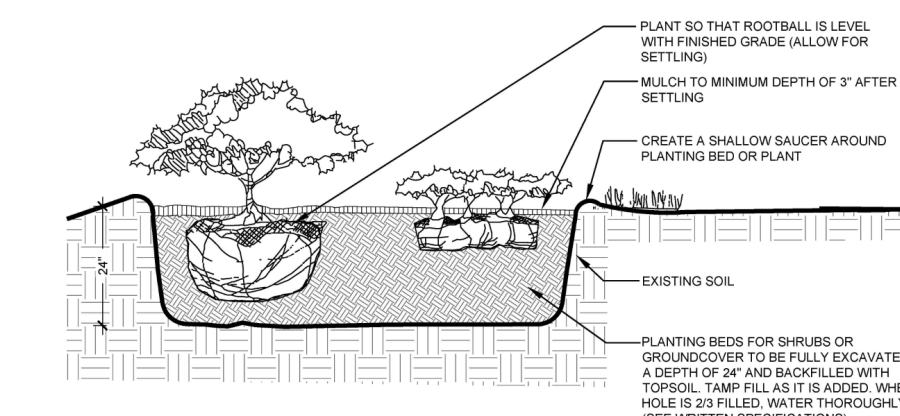
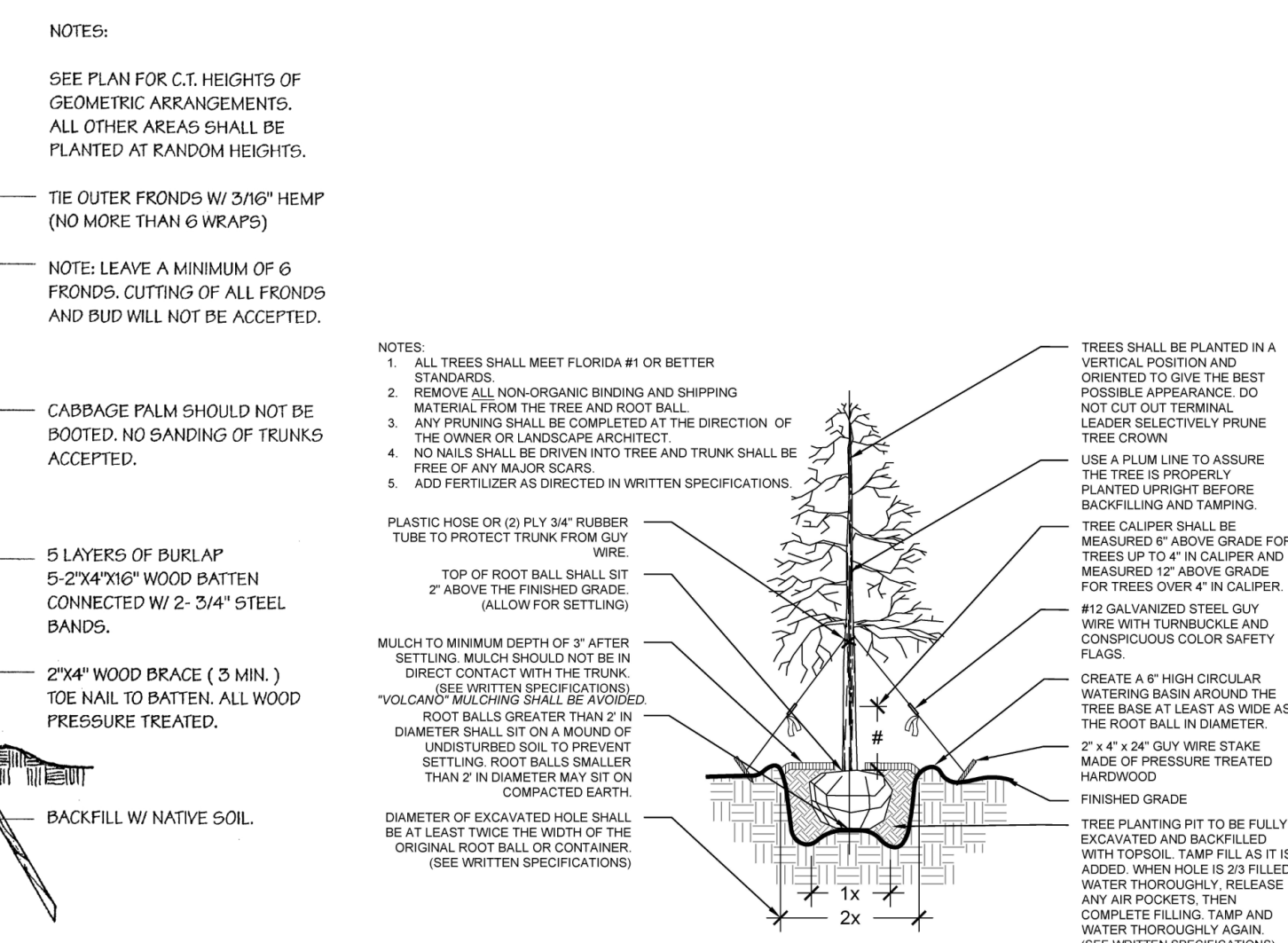




SITE STATS:		
SITE AREA (NET) 30,909 Sq. Ft.	0.71 ACRES (BCPA)	100%
PROPERTY BLDG. #1 AREA	(16,095) square ft.	52%
PROPERTY BLDG. #2 AREA	(14,844) square ft.	48%
(BUILDING #1 AREA (FLOOR 1)	(4,780) square ft.	NON PERMEABLE 16%
(BUILDING #2 AREA (FLOOR 1)	(4,000.00) square ft.	NON PERMEABLE 13%
(BUILDING #2 AREA (FLOOR 2)	(4,000.00) square ft.	
LANDSCAPE AREA	(6,000) square ft.	PERMEABLE 19%
CONCRETE/ASPHALT	(16,294) square ft.	NON PERMEABLE 52%

PLANT & MATERAILS LIST						
SYM	QTY	BOTANICAL NAME	COMMON NAME	SPECIFICATIONS (OA X SPR, DBH)	SPACING	REMARKS
PALMS						
SP	5	Sabal Palmetto	Cabbage Palm	18' OA x 10' SPR	A.S.	Florida #1
TREES						
CE	9	Conocarpus erectus	Green Buttonwood	FG, 14-16" OA X 6-8" SPR, 3.5" DBH	A.S.	Florida #1
QV	1	Quercus virginiana	Live Oak	FG, 14-16" OA X 6-8" SPR, 5-5.5" CT, 3.5" DBH	A.S.	Florida #1
ACCENTS, SHRUBS, GROUNDCOVERS AND VINES						
CI	101	Chrysobalanus icaco 'Red Tip'	Cocoplum	3 Gal, 24" x 12"	3' O.C.	Florida #1
CM	151	Carissa macrocarpa 'Emerald Blanket'	Natal Plum Emerald Blanket	3 Gal, 18" x 12"	25' O.C.	Florida #1
LMS	50	Liriope muscari 'Super Blue'	Liriope 'Super Blue'	1 Gal, 12" x 6"	15' O.C.	Florida #1
SOD & ARTIFICIAL TURF						
(SF)	(UNITS)					
3847	7.7	Stenotaphrum secundatum 'Floratam'	St. Augustine 'Floratam'	500 sf		



All trees shall be located within a mulch planting bed with a minimum of two (2) feet of clearance from the edge of the bed.