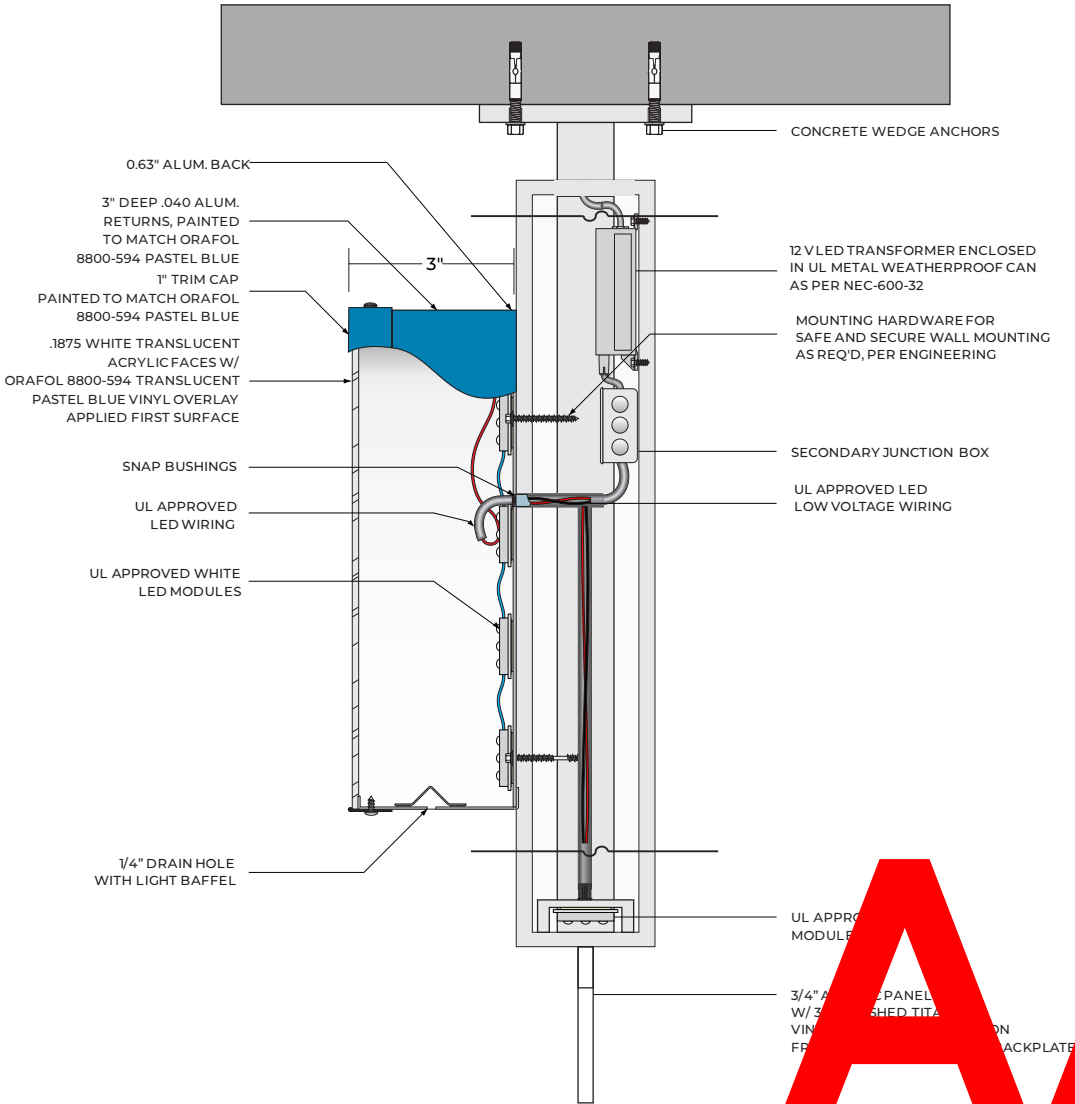


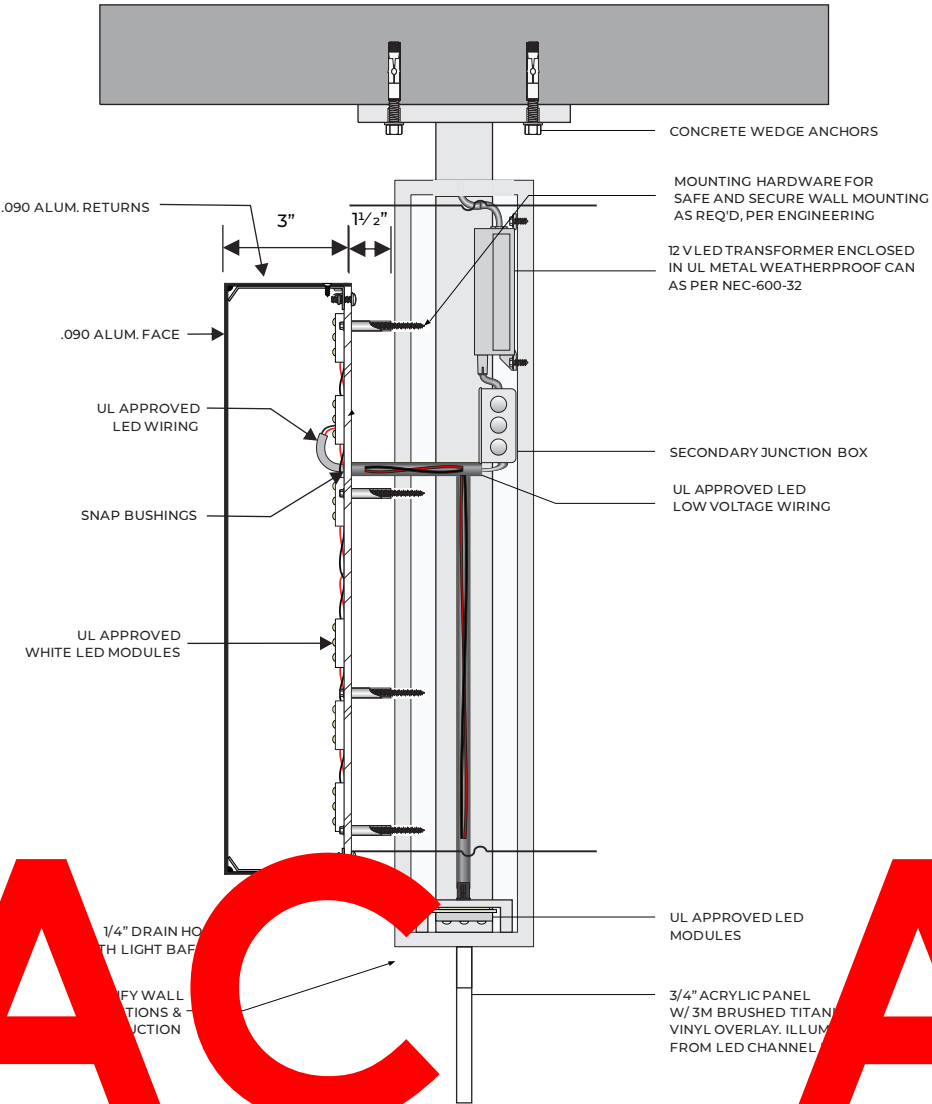
SIGN A



**A** Hanging Backplate w/ Face Lit Channel Letters, ReverseLit Channel Border & Illuminated Blade - NIGHT VIEW QTY (3)  
Scale: 1/2" = 1'-0" Display Sq. Ft.: 48.57



Hanging Backplate w/ Face Lit Channel Letters - DETAIL  
NOT TO SCALE



Hanging Backplate w/ ReverseLit Border - DETAIL

**AAC AAC**  
**PZ19-30000007**  
**1/5/2021**  
**PZ19-30000007**  
**9/1/2020**



SOUTHEAST  
CREATIVE GROUP

3375 NW 55th St  
Suite B  
Ft. Lauderdale, FL 33309



Project Address:  
1 N. OCEAN BLVD.  
POMPANO BEACH, FL 33062

Customer Approval:

Date:

NOTE TO CUSTOMER: Please be sure that all the information on this drawing is correct. Your product will be manufactured based on these drawings. Any revisions after fabrication has commenced will be billed to the customer. If there are any questions as to color, size, or placement, NOW is the time to clarify them. You are entitled to one (1) revision free of charge. Additional revisions will be billed on a time and materials basis. Due to the difference between paint, plastic, and other materials, colors printed on this proof or colors viewed on screen may not match actual finish and colors. All colors must be confirmed and initialed prior to production.

Any party accepting this document does so in confidence and agrees that it should not be duplicated, in whole or in part, nor disclose to others, without the written consent of the client. Reference copy list for copy/graphic specific to each sign location. Contractor shall verify all conditions on site and notify any variation from what is shown on the drawings before proceeding with fabrication.

**UL** ALL ELECTRIC SIGNS ARE  
UL LISTED AND LABELED

Engineer Information:

Engineering Seal:

Engineer Designation, & Production shall comply with state & city codes.

ALL COLORS SHOWN ON DRAWING ARE FOR INFORMATION PURPOSES ONLY. ALL COLORS MUST BE CONFIRMED AND INITIALED BY PROJECT MANAGER PRIOR TO PRODUCTION.

Design

Revision

Date

Sheet: