

ROOF PLAN STATEMENT

ROOF SECONDARY DRAINAGE SYSTEM WAS DESIGNED TO PREVENT THE ACCUMULATION OF MORE THAN 5 INCHES OF WATER ON ANY PORTION OF THE ROOF (F.B.C. 2017).

OVERFLOW DRAINS CALCULATIONS

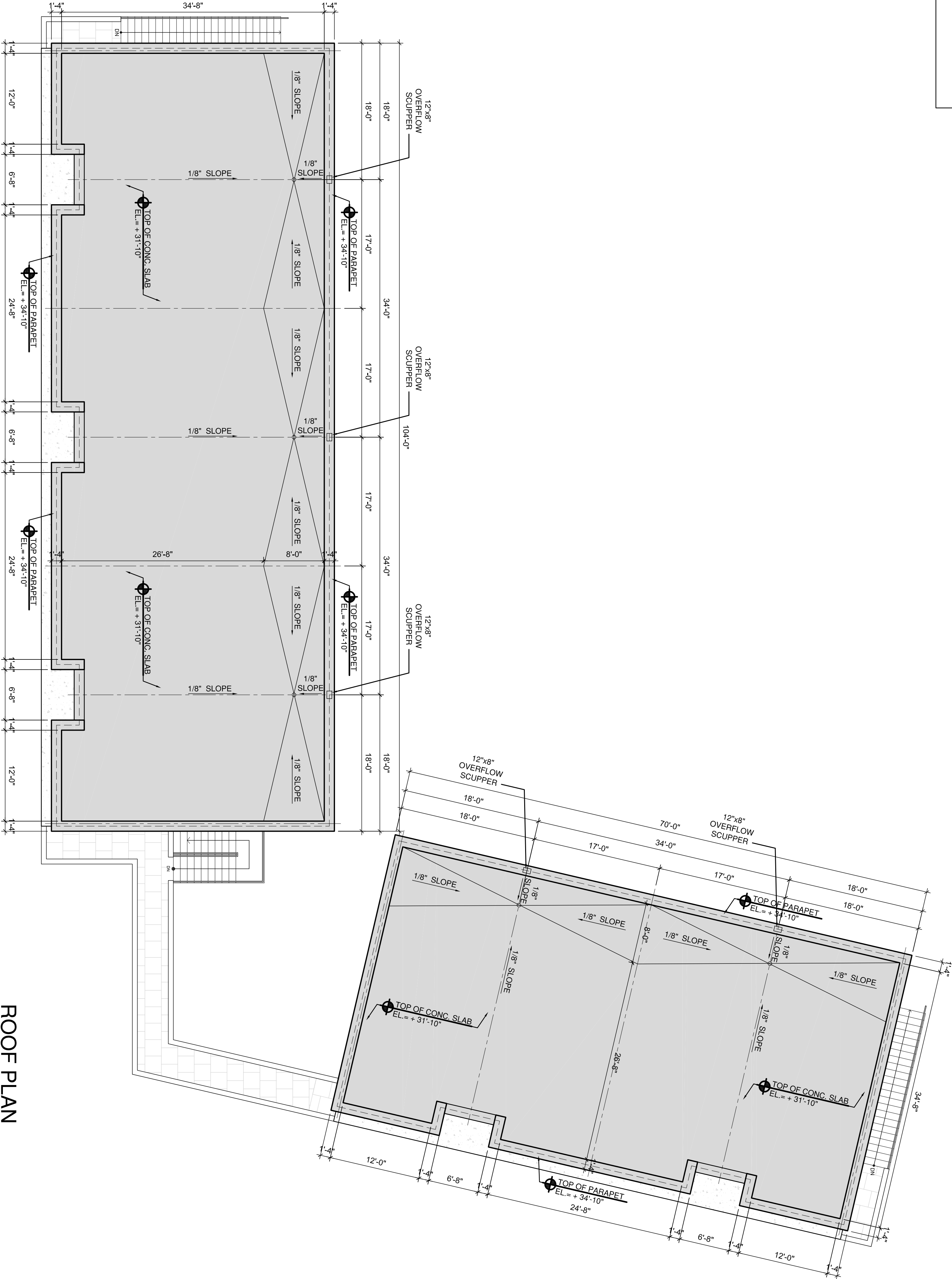
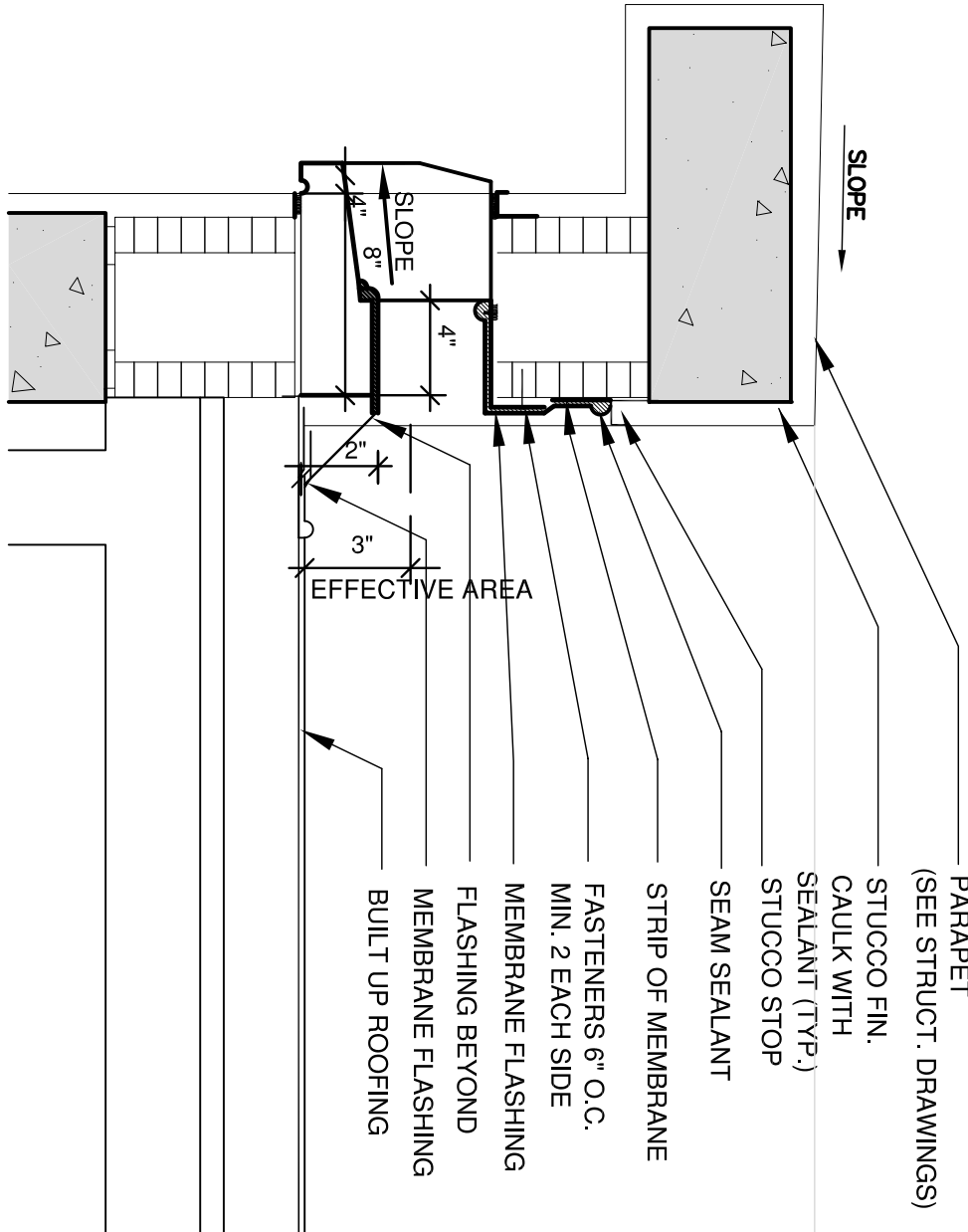
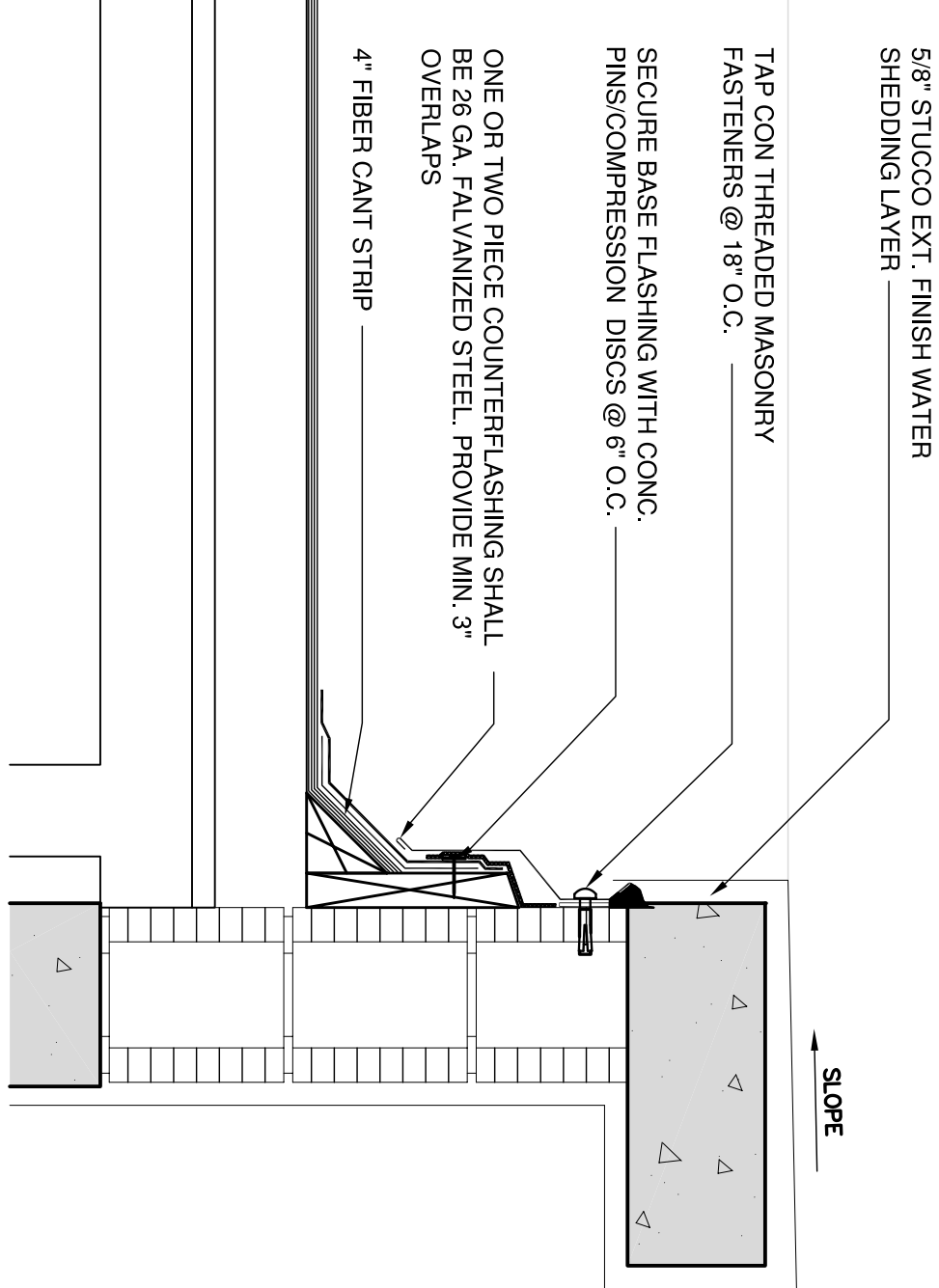
Rainfall rate
100 years / 1 Hour Rainfall: 5 in/hr
Eastern United States

ROOF DRAINAGE NOTES: (F.B.C. 2017 EDITION)

- WHERE PARAPETS OR CURBS ARE CONSTRUCTED ABOVE THE LEVEL OF THE ROOF, PROVISION SHALL BE MADE TO PREVENT RAIN WATER FROM ACCUMULATING ON THE ROOF IN EXCESS OF THAT CONSIDERATE IN THE DESIGN. IN THE EVENT THE RAIN WATER DRAINS, CONDUCTIONS OR LEADERS BECOME CLOGGED (F.B.C. 2017).
- WHERE ROOFS ARE NOT DESIGNED IN ACCORDANCE WITH SECTION F.B.C. 2017, OVERFLOW DRAINS OR SCUPPERS SHALL BE PLACED TO PREVENT AN ACCUMULATION OF MORE THAN 5 INCHES OF WATER ON ANY PORTION OF THE ROOF. IN DETERMINING THE LOAD THAT COULD RESULT SHOULD THE PRIMARY DRAINAGE SYSTEM BE BLOCKED, THE LOADS CAUSED BY THE DEPTH OF WATER (4.6" HEAD) NEEDED TO CAUSE THE WATER TO FLOW OUT THE SCUPPERS OR (F.B.C. 2017).
- DRAINS OR SCUPPERS INSTALLED TO PROVIDE OVERFLOW DRAINAGE SHALL BE NOT LESS IN AGGREGATE AREA THAN AS SHOWN IN FIGURE F.B.C. 2017, BUT NOT LESS THAN 4 INCHES DIMENSION IN ANY DIRECTION AND SHALL BE PLACED IN PARAPETS NOT LESS THAN 2 INCHES NO MORE THAN 4 INCHES ABOVE THE LOW POINT OF THE FINISHED ROOFING SURFACE AND SHALL BE LOCATED AS CLOSE AS PRACTICAL TO REQUIRED VERTICAL LEADERS, CONDUCTIONS OR DOWNSPOUTS. THE ROOF SHALL BE DESIGNED TO DRAIN TO THE DRAINAGE SYSTEM. THE DRAINAGE SYSTEM SHALL BE DESIGNED TO DRAIN THE ROOF IN SUCH A MANNER AS TO DRAIN INTO THE AREA CONSIDERED. THE ONE-HALF OF THE AREA VERTICAL WALL SHALL BE ADDED TO THE HORIZONTAL PROJECTION. (F.B.C. 2017).
- ALL ROOFS SHALL BE DESIGNED WITH SUFFICIENT SLOPE OR CAMBER TO ASSURE ADEQUATE DRAINAGE AFTER THE LONG TERM DEFLECTION FROM DEAD LOAD. (F.B.C. 2017).
- WHEN OTHER MEANS OF DRAINAGE OF OVERFLOW WATER IS NOT PROVIDED, OVERFLOW SCUPPERS SHALL BE PLACED IN WALLS OR PARAPETS NOT LESS THAN 2 INCHES (51 MM) NOR MORE THAN 4 INCHES (102 MM) ABOVE THE FINISHED ROOF COVERING AND SHALL BE LOCATED AS CLOSE AS PRACTICAL TO REQUIRED VERTICAL LEADERS OR DOWNSPOUTS OR WALL AND PARAPET SCUPPERS, AN OVERFLOW SCUPPER SHALL BE SIZED IN ACCORDANCE WITH THE FLORIDA BUILDING CODE PLUMBING (F.B.C. 2017).

WATER PROOFING NOTE FOR ALL CON. EYEBROW

CONTRACTOR SHALL APPLY TOW LAYERS OF WATER PROOFING LIQUID MEMBRANE AS MANUFACTURED BY SOMAY ROOFING PRODUCTS OR APPROVED EQUAL.



ROOF PLAN

SCALE: 1/8" = 1'-0"