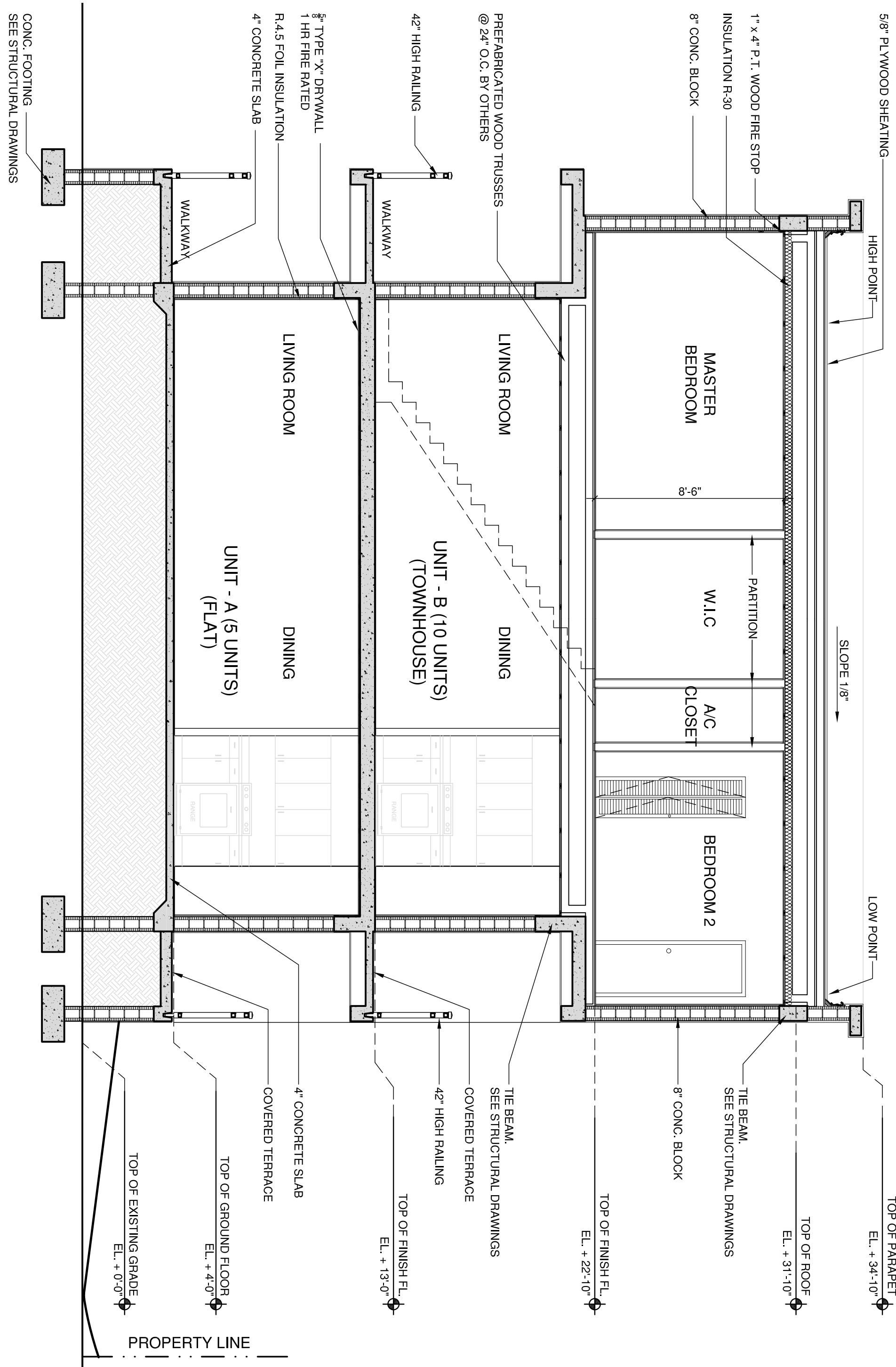


DETAIL "A"

SCALE: 1/4" = 1'-0"

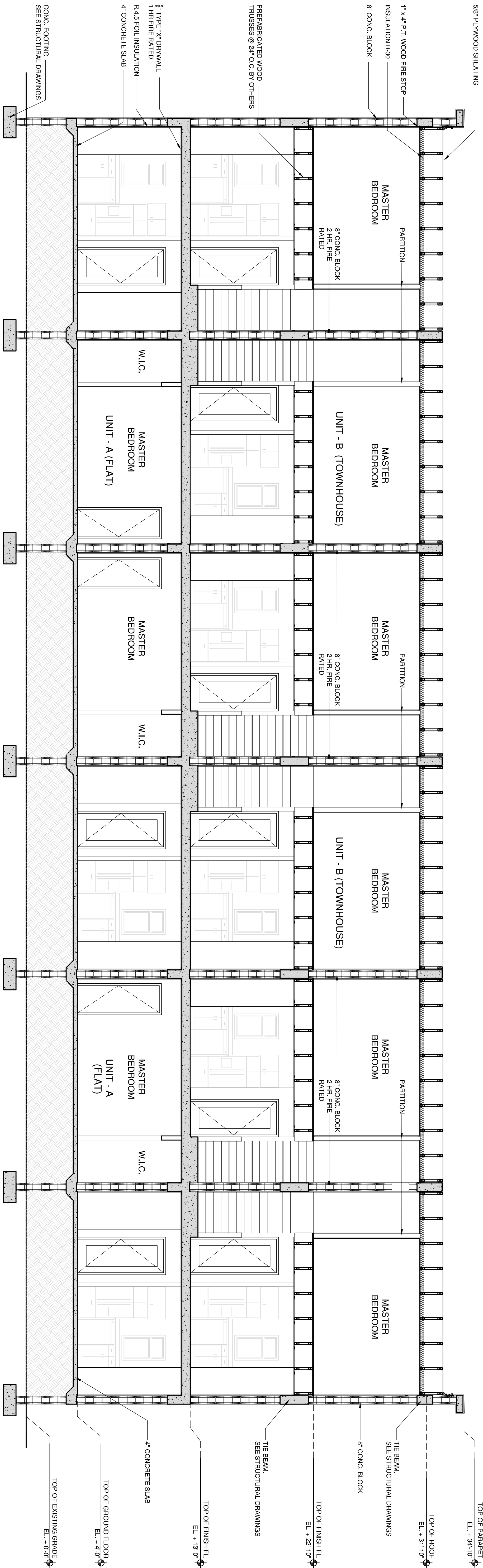
TYPICAL MASONRY WALL CONSTRUCTION ISOMETRIC

SCALE: N.T.S.



BLDG. CROSS SECTION

SCALE: 1/4" = 1'-0"



BUILDING SECTION

SCALE: 1/4" = 1'-0"