

# HIGHLAND OAKS

## 8-UNIT BUILDING

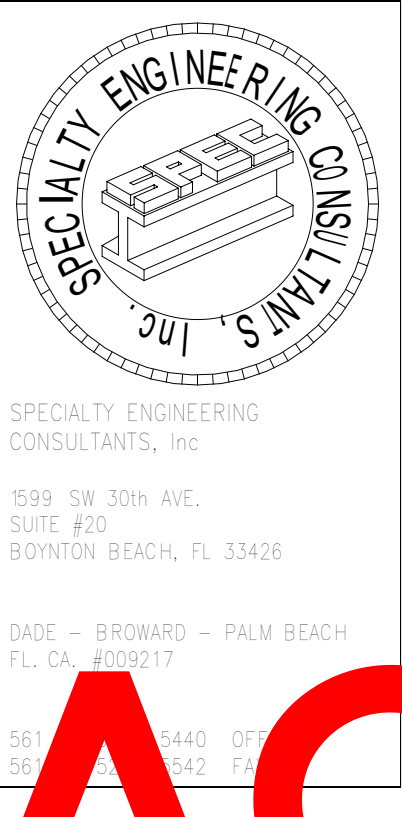
SHEET INDEX			
	COVER SHEET		
A-1	BUILDING PLANS		
A-2	ELEVATION TYPE A		
A-3	ELEVATION TYPE B		

Dewey A.  
LeBlanc

Digitally signed by Dewey A. LeBlanc  
DN: c=US, st=Florida, l=Boynton Beach, o=Specialty Engineering Consultants, Inc., cn=Dewey A. LeBlanc, email=Adam@specsfc.com  
Date: 2021.03.03 15:57:30 -05'00'

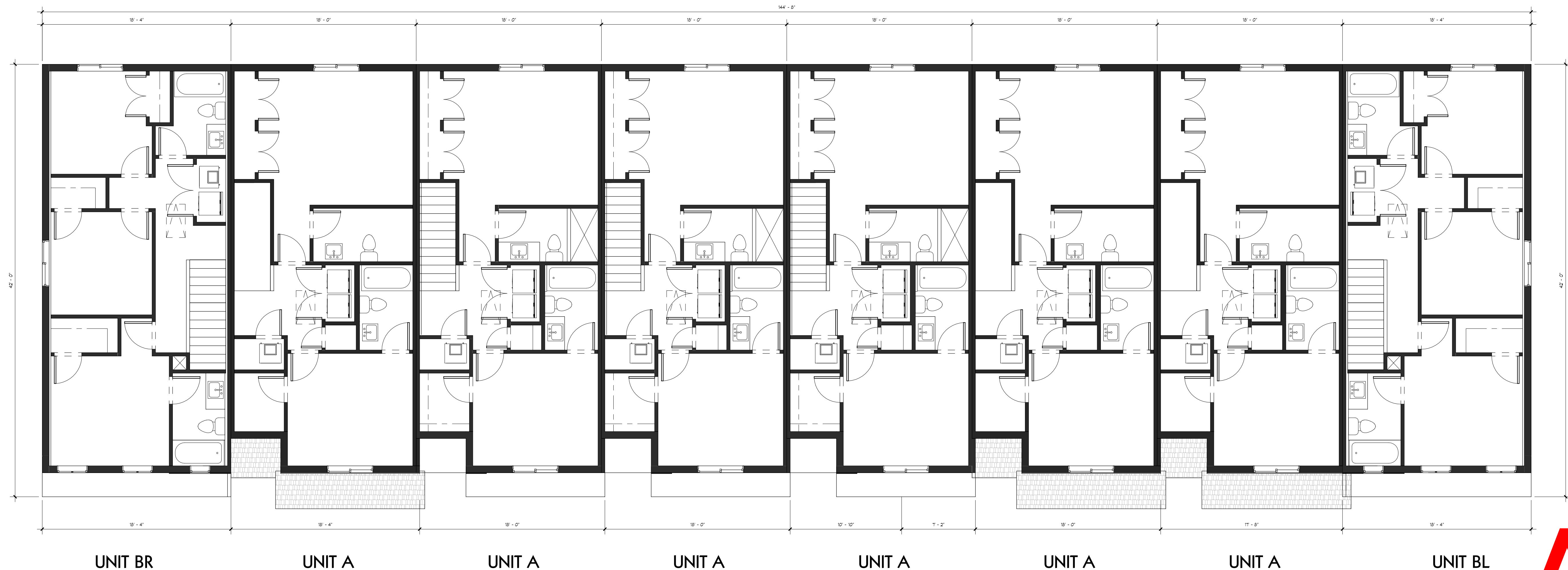
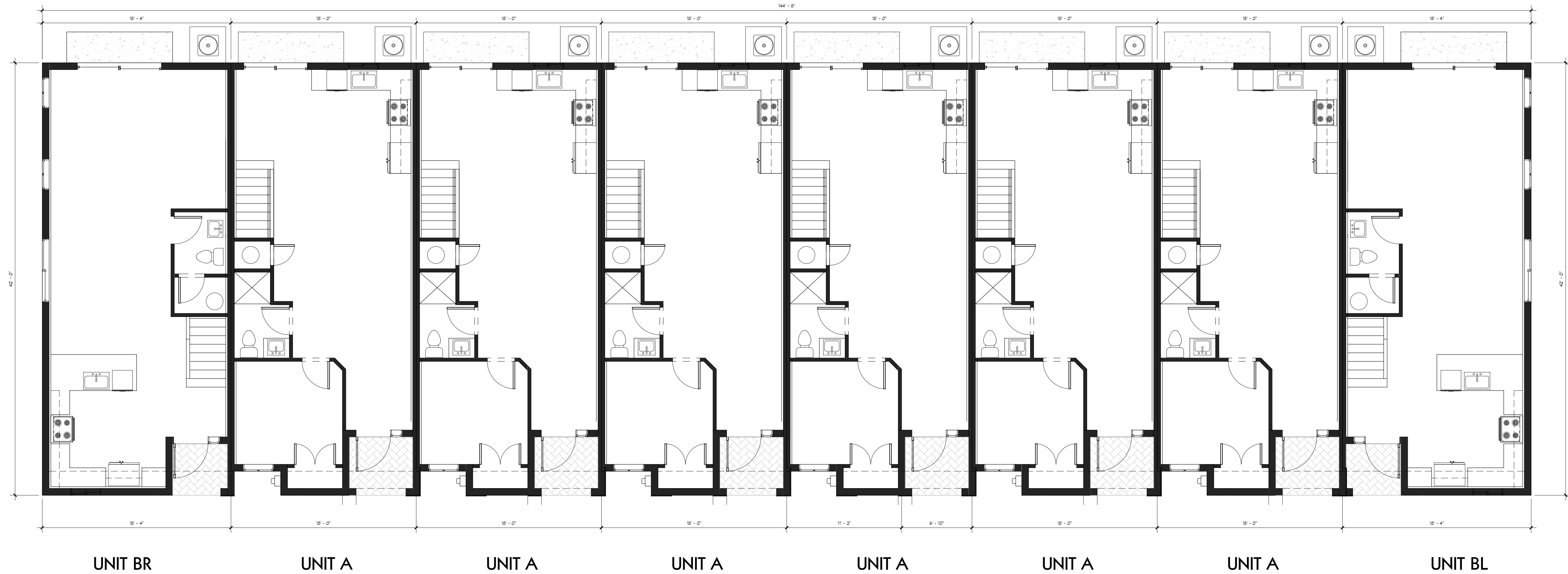
SITE & AREA CALCULATIONS	
TOTAL BUILDING AREA	11,086 SQ. FT.
PROPOSED A/C AREA	11,359 SQ. FT.
PROPOSED NON A/C AREA	264 SQ. FT.

BLDG. DESIGN DATA	
CODES: FLORIDA RESIDENTIAL BLDG. CODE 2020 EDITION NFPA FL FIRE PREVENTION CODE 7TH ED. NEC NATIONAL ELECTRIC CODE 2017 CARBON MONOXIDE DETECTORS REQUIREMENTS PER FL ADMINISTRATIVE CODE RULE 9B-3.0472 ACI 318-14; ASTM 47th ED.	
DESIGN CRITERIA	
COUNTY	POMPANOBEECH, FL
OCCUPANCY GROUP	R-3
NUMBER OF STORIES	2
BUILDING CATEGORY	ENCLOSED
BASIC WIND SPEED, mph	170
WIND IMPORTANCE FACTOR	1.0
WIND EXPOSURE CATEGORY	C
VELOCITY PRESSURE	28.44 PSF
INTERNAL PRESSURE COEFFICIENT	+/- .18
MINIMUM SOIL PRESSURE, psf	2500
FLOOR LOADS (LIVE & DEAD)	55
ROOF DEAD LOAD, psf	20
ROOF LIVE LOAD, psf	30
CONSTRUCTION TYPE	"III B" UNPROTECT



**AAC**  
PZ13-12000041  
6/1/2021

8-UNIT BUILDING



BUILDING PLANS

SHEET INFORMATION  
PROJECT INFORMATION  
8- UNIT BUILDING  
HIGHLAND OAKS  
POMPANO BEACH, FLORIDA

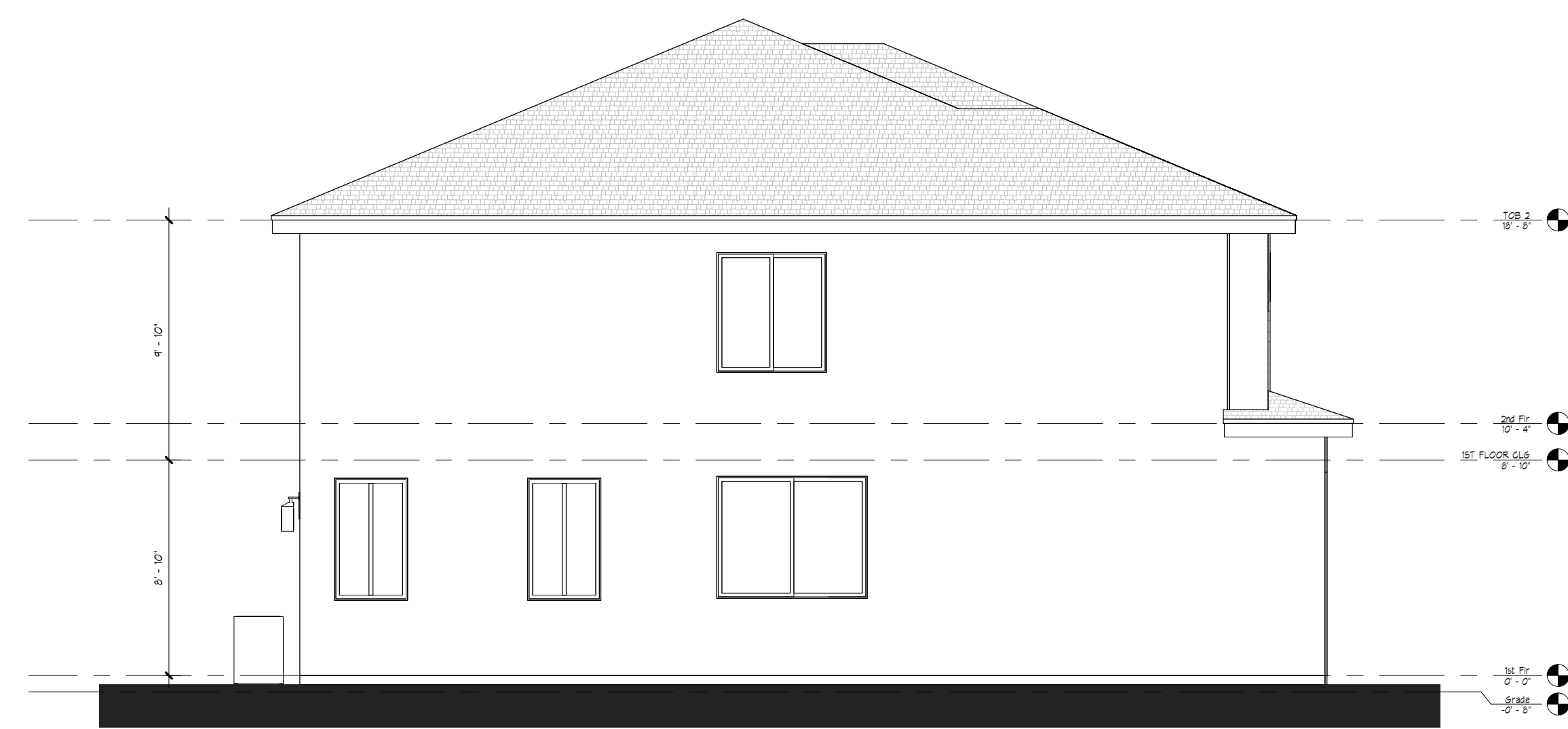
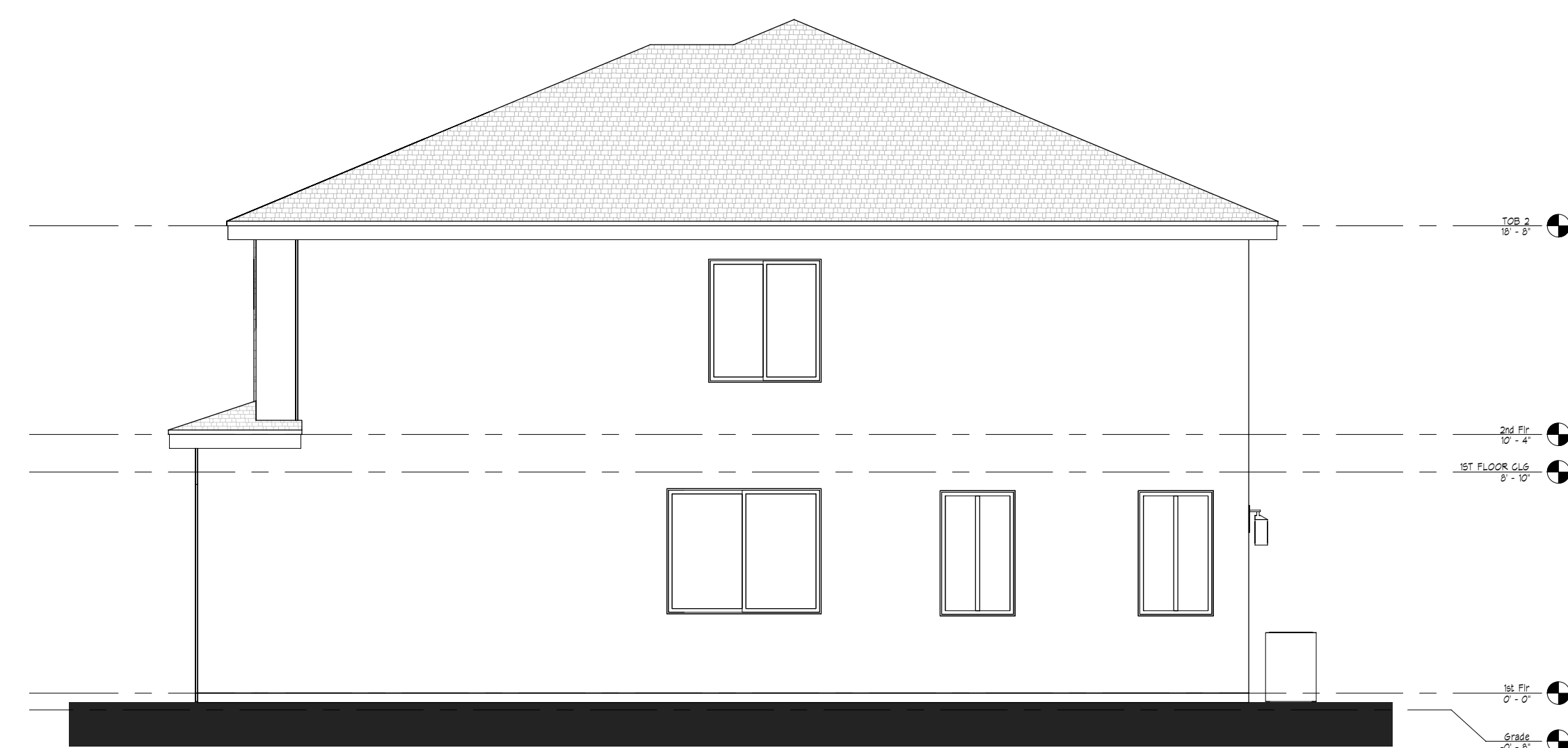
SPECIALTY ENGINEERING CONSULTANTS, Inc.  
1599 SW 30th AVE.  
SUITE #20  
BOYNTON BEACH, FL 33426  
DADE - BROWARD - PALM BEACH  
FL, CA #0009217  
561 - 752 - 5440 OFFICE  
561 - 752 - 5542 FAX

FILE NAME:  
SCALE:  
DATE 2/21/2021  
RVD. BY Checker  
DRWN. BY Author

REVISION SCHEDULE		
NO	DATE	Description

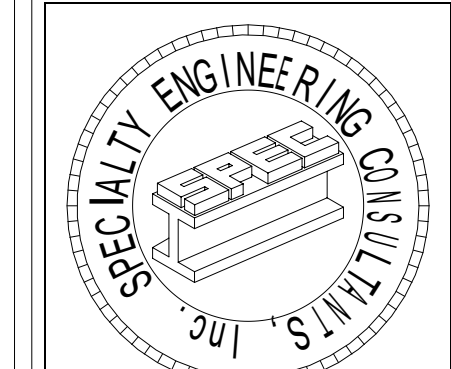
Dewey A. LeBlanc  
Digitally signed by Dewey A. LeBlanc  
DN: cn=US, st=Florida, o=Specialty Engineering Consultants, Inc., cn=Dewey A. LeBlanc, email=Adams@secc.com  
155746  
SEAL  
D. A. LeBlanc, PE FL #77012  
SHEET #

AAC  
PZ13-12000041  
6/1/2021



# ELEVATIONS

PROJECT INFORMATION	SHEET INFORMATION
	8- UNIT BUILDING TYPE B
HIGHLAND OAKS POMPANO BEACH FLORIDA	



SPECIALTY ENGINEERING  
CONSULTANTS, Inc.  
1599 SW 30th AVE.  
SUITE #20  
BOYNTON BEACH, FL 33426  
DADE - BROWARD - PALM BEACH  
FL. CA. #009217  
561 - 752 - 5440 OFFICE  
561 - 752 - 5542 FAX

FILE NAME:
SCALE
DATE 2/21/2021
RVD. BY Checker
DRWN. BY Author

REVISION SCHEDULE		
NO	DATE	Description

Dewey  
A.  
LeBlanc  
C  
Digitally signed by  
Dewey A. LeBlanc  
DN: c=US, st=Florida,  
o=Specialty Engineering  
Consultants, Inc.,  
ou=Dewey A. LeBlanc,  
email=adam@specf.c  
155811  
SEAL  
D. A.  
LeBlanc, PE FL #77012  
SHEET

**AAC**  
PZ13-12000041-3  
6/1/2021