

N:\1111963.00 - 900 N. Ocean Blvd - PRH 900 North Ocean, LLC\Drawings\DWG1111963.00 BOUNDARY & TOPO SURVEY.dwg

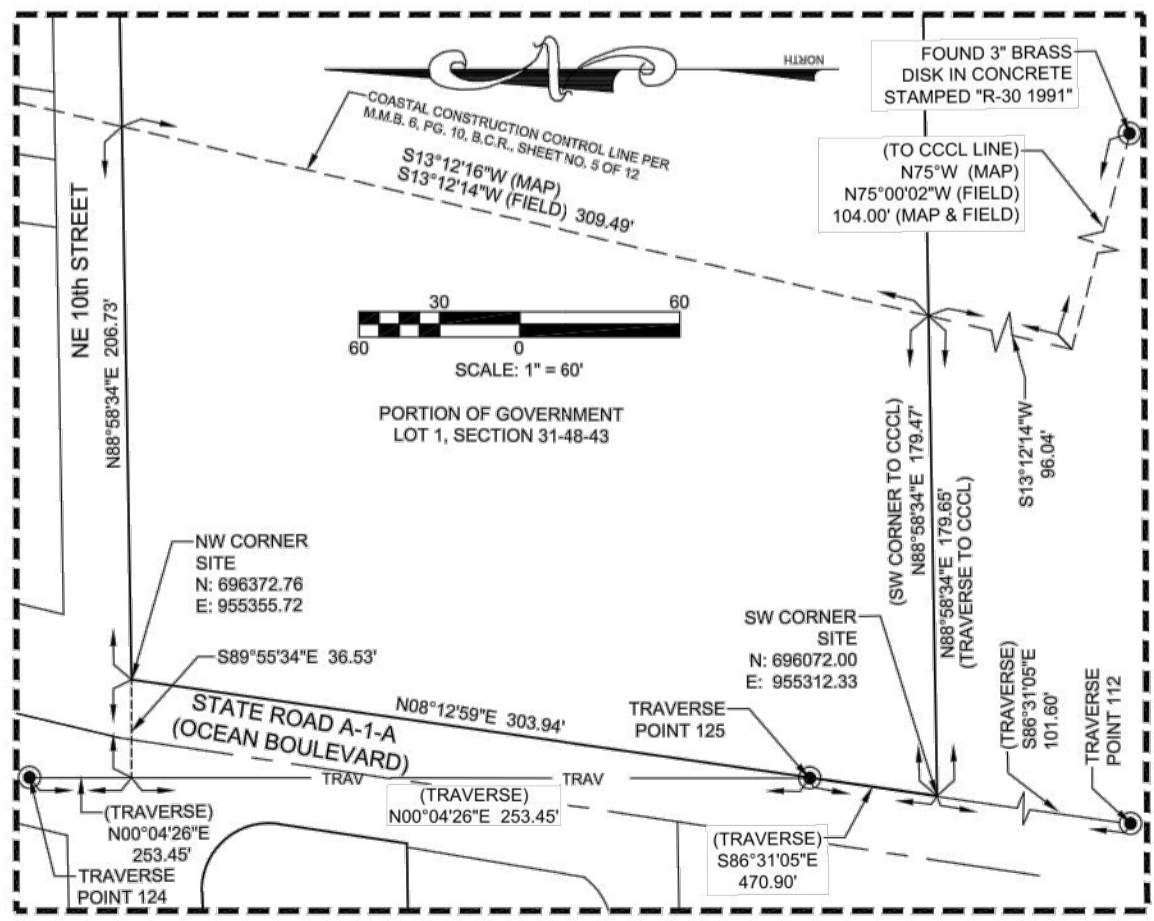
GEODETIC CONTROL	LATITUDE	LONGITUDE	NORTHING	EASTING	ELEVATION NAVD. 1988	COMMENTS
R 400 PUBLISHED	26°16'17.4529"	-80°06'51.9827"	705368.63	946364.34	18.31	HORIZONTAL VALUES SHOWN IN FLORIDA EAST ZONE, NAD 83 (2011), U.S. SURVEY FEET AND DECIMAL UNITS THEREOF.
R 400 CONTROL CHECK	26°16'17.4527"	-80°06'51.9828"	705368.60	946364.34		ELEVATION VALUES EXPRESSED IN U.S. SURVEY FEET AND DECIMAL UNITS THEREOF. VALUES OBTAINED USING RTK (REAL TIME KINEMATIC) SOFTWARE CONNECTED TO THE FDOT (FLORIDA DEPARTMENT OF TRANSPORTATION) GPS NETWORK.
V 234 HELD FIXED	26°14'38.5237"	-80°06'54.2571"	695378.25	946225.56	16.47	
V 234 CONTROL CHECK	26°14'38.5235"	-80°06'54.2572"	695378.22	946225.55		

TRAVERSE POINTS
COMMENTS
THE HORIZONTAL LOCATION OF THE TRAVERSE WAS ESTABLISHED VIA GPS OBSERVATIONS BETWEEN NGS GEODETIC CONTROL MONUMENT V 234 AND TRAVERSE POINTS 124 AND 125 WITH AN EXPECTED ACCURACY OF ± 0.05'. ALL GPS OBSERVATIONS WERE PERFORMED USING RTK (REAL TIME KINEMATIC) SOFTWARE CONNECTED TO THE FDOT (FLORIDA DEPARTMENT OF TRANSPORTATION) GPS NETWORK. THE HORIZONTAL CLOSURE OF THE TRAVERSE SHOWN HEREON MEETS OR EXCEEDS THE FDOT STANDARD FOR THIRD ORDER CLASS I STANDARDS.
ELEVATIONS SHOWN HEREON FOR THE CCCL CONTROL MONUMENTS WERE ESTABLISHED BY A THIRD ORDER LEVEL RUN. THE VERTICAL CONTROL MARKS FOR THE LEVEL RUN WERE NATIONAL GEODETIC SURVEY BENCHMARK Y-311 "AD2604". A BRASS DISC SET ON THE TOP OF THE EAST SIDE OF THE BASE OF THE COAST GUARD STATION LIGHTHOUSE ABOUT 2.35 MILES NORTH ALONG STATE HIGHWAY A-1-A FROM THE JUNCTION OF STATE HIGHWAY 814 AT POMPANO BEACH, 10 FEET SOUTH OF THE SOUTHEAST CORNER OF THE STEPS LEADING UP TO LIGHTHOUSE, 14.6 FEET WEST OF THE SOUTHEAST LEG OF THE LIGHTHOUSE AND ABOUT LEVEL WITH THE GROUND; ELEVATION=9.63' AND BENCHMARK 14.745, "AD2592", IS A SURVEY DISC IN THE TOP OF THE NORTH END OF THE EAST ABUTMENT OF THE HIGHWAY BRIDGE OVER THE INTRACOASTAL WATERWAY ABOUT 0.2 MILE WEST ALONG STATE HIGHWAY 814 FROM THE JUNCTION OF STATE HIGHWAY A-1-A; ELEVATION=13.17'. THE EXPECTED VERTICAL ACCURACY OF THE TRAVERSE POINTS IS ± 0.03'. ALL DISTANCES SHOWN HEREON ARE IN U.S. SURVEY FEET AND DECIMAL UNITS THEREOF.

TRAVERSE POINTS	LATITUDE	LONGITUDE	NORTHING	EASTING	ELEVATION NAVD. 1988	SCALE FACTOR	CONVERGENCE
124	26°14'48.125"	-80°05'14.309"	696410.8	955319.3	10.11	1.00004379	0°24'13.154"
125	26°14'49.238"	-80°05'14.336"	696119.3	955318.9	9.20	1.00004379	0°24'13.101"

COASTAL CONSTRUCTION CONTROL MONUMENTS
COMMENTS:
THE HORIZONTAL VALUES FOR THE CCCL CONTROL MONUMENTS LISTED BELOW ARE IN FLORIDA EAST ZONE, NAD 83 (2011), U.S. SURVEY FEET AND DECIMAL UNITS THEREOF AND WERE ESTABLISHED BY ANGLE AND DISTANCE FROM THE TRAVERSE SHOWN ON THIS SHEET. THE HORIZONTAL LOCATION OF THE TRAVERSE WAS ESTABLISHED VIA GPS OBSERVATIONS BETWEEN NGS GEODETIC CONTROL MONUMENT V 234 AND TRAVERSE POINTS 124 AND 125. THE EXPECTED HORIZONTAL ACCURACY OF THE CCCL CONTROL MONUMENTS IS ± 0.05'. ALL GPS PROCESSING WAS PERFORMED USING RTK (REAL TIME KINEMATIC) SOFTWARE CONNECTED TO THE FDOT (FLORIDA DEPARTMENT OF TRANSPORTATION) GPS NETWORK. THE HORIZONTAL CLOSURE OF THE TRAVERSE SHOWN HEREON MEETS OR EXCEEDS THE FDOT STANDARD FOR THIRD ORDER CLASS I STANDARDS.
ELEVATIONS SHOWN HEREON FOR THE CCCL CONTROL MONUMENTS WERE ESTABLISHED BY A THIRD ORDER LEVEL RUN. THE VERTICAL CONTROL MARKS FOR THE LEVEL RUN WERE NATIONAL GEODETIC SURVEY BENCHMARK Y-311 "AD2604". A BRASS DISC SET ON THE TOP OF THE EAST SIDE OF THE BASE OF THE COAST GUARD STATION LIGHTHOUSE ABOUT 2.35 MILES NORTH ALONG STATE HIGHWAY A-1-A FROM THE JUNCTION OF STATE HIGHWAY 814 AT POMPANO BEACH, 10 FEET SOUTH OF THE SOUTHEAST CORNER OF THE STEPS LEADING UP TO LIGHTHOUSE, 14.6 FEET WEST OF THE SOUTHEAST LEG OF THE LIGHTHOUSE AND ABOUT LEVEL WITH THE GROUND; ELEVATION=9.63' AND BENCHMARK 14.745, "AD2592", IS A SURVEY DISC IN THE TOP OF THE NORTH END OF THE EAST ABUTMENT OF THE HIGHWAY BRIDGE OVER THE INTRACOASTAL WATERWAY ABOUT 0.2 MILE WEST ALONG STATE HIGHWAY 814 FROM THE JUNCTION OF STATE HIGHWAY A-1-A; ELEVATION=13.17'. THE EXPECTED VERTICAL ACCURACY OF CC MONUMENTS IS ± 0.03'.

CCCL CONTROL MONUMENTS	LATITUDE	LONGITUDE	NORTHING	EASTING	ELEVATION NAVD. 1988	SCALE FACTOR	CONVERGENCE
R-28	26°15'01.598"	-80°05'06.972"	697775.9	955977.7	9.73	1.00004424	0°24'16.592"
R-30	26°14'43.591"	-80°05'11.589"	695954.7	955570.2	11.52	1.00004396	0°24'14.293"



BOUNDARY & TOPOGRAPHIC SURVEY 900 N. OCEAN BOULEVARD

LOT 1, BLOCK 1, ATLANTIC VIEW NO. 2, PLAT BOOK 27, PAGE 21, B.C.R.
A PORTION OF THE NORTH 300 FEET OF GOVERNMENT LOT 1, SECTION 31-48-43
CITY OF POMPANO BEACH, BROWARD COUNTY, FLORIDA

SHEET 4 OF 4
PROJECT NUMBER
11963.00

DATE	BY	REVISION
01/18/21		
SCALE	1"=60' & 1"=80'	
FIELD BOOK	948	
DRAWN BY	DOB	
CHECKED BY	MMH	

KEITH
301 EAST ATLANTIC BOULEVARD
POMPANO BEACH, FLORIDA 33060-6643
(954) 788-3400
EMAIL: mail@KEITHteam.com LB NO. 6860



900 N OCEAN

POMPANO BEACH, FLORIDA

OWNER:

PRH 900 NORTH OCEAN, LLC

ARQUITECTONICA

2900 Oak Avenue
Miami, Florida 33133
Tel: (305) 372-1812
www.architectonica.com



301 E Atlantic Blvd.
Pompano Beach, Florida 33060
Tel: (954) 788-3400
www.keithteam.com

STRUCTURAL ENGINEER:

TBD.

MEP ENGINEER:

TBD.

ARGEO

2900 Oak Avenue
Miami, Florida 33133
Tel: (305) 372-1812
www.architectonica.com

SEAL/SIGNATURE/DATE:

Sherri Gutierrez
Digitally signed by Sherri Gutierrez
DN: cn=Sherri Gutierrez, o=ARGEO, ou=ARGEO, email=sgutierrez@argeo.com, c=US
Date: 2021.04.28 12:32:05 -0500

DRC SUBMITTAL

28 APRIL, 2021

ISSUE #	DESCRIPTION	DATE
01	DRC	03/04/2021
02	DRC	03/18/2021

PROJECT NUMBER:

ALL DESIGNS INDICATED IN THESE DRAWINGS ARE THE PROPERTY OF ARQUITECTONICA INTERNATIONAL CORP.
ALL COPYRIGHTS RESERVED 2021. NO COPIES, TRANSMISSIONS, REPRODUCTIONS OR ELECTRONIC MANIPULATION OF ANY PORTION OF THESE DRAWINGS IN WHOLE OR IN PART ARE TO BE MADE WITHOUT THE EXPRESS WRITTEN PERMISSION OF ARQUITECTONICA INTERNATIONAL CORP.

DRAWING NAME:

SURVEY

DRC
004 S-4
PZ21 ARQUITECTONICA INTERNATIONAL, Inc.
7/1/2021
SCALE: 1" = 20'-0"